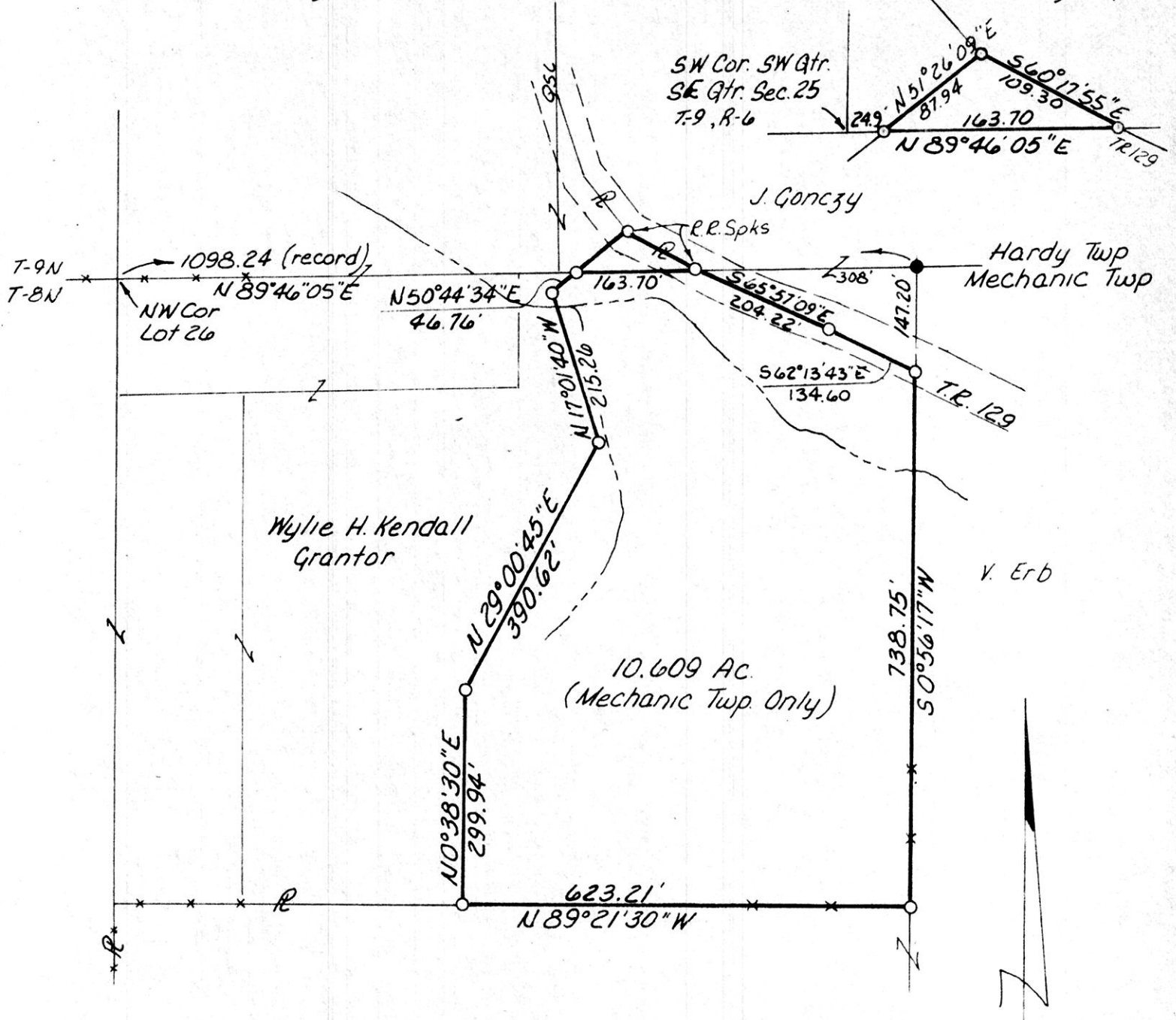


Mechanic Township, Lot 26, 2nd Qtr. T-8N R-6W
 Hardy Township, SE Qtr. Sec. 25 T-9N, R-6W
 Holmes County, Ohio

ENLARGED VIEW
 0.102 AC In Hardy Twp.



Scale: 1" = 200'

- I.P. Fd
- I.P. Set

I Certify This Survey To Be Correct
 To The Best Of My Knowledge

William H Long June 3, 1981
 William H Long R.S. 6505



132705

REC'D. July 16, 1982
 AT 3:53 O'CLOCK P.M.
 RECORDED July 19, 1982
 Plat VOL 10 PG. 31
 Holmes Co Ohio Fee 2.00
Richard Graven Recorder

MAP OFFICE COPY

Deed Vol. 217; Pg. 672.