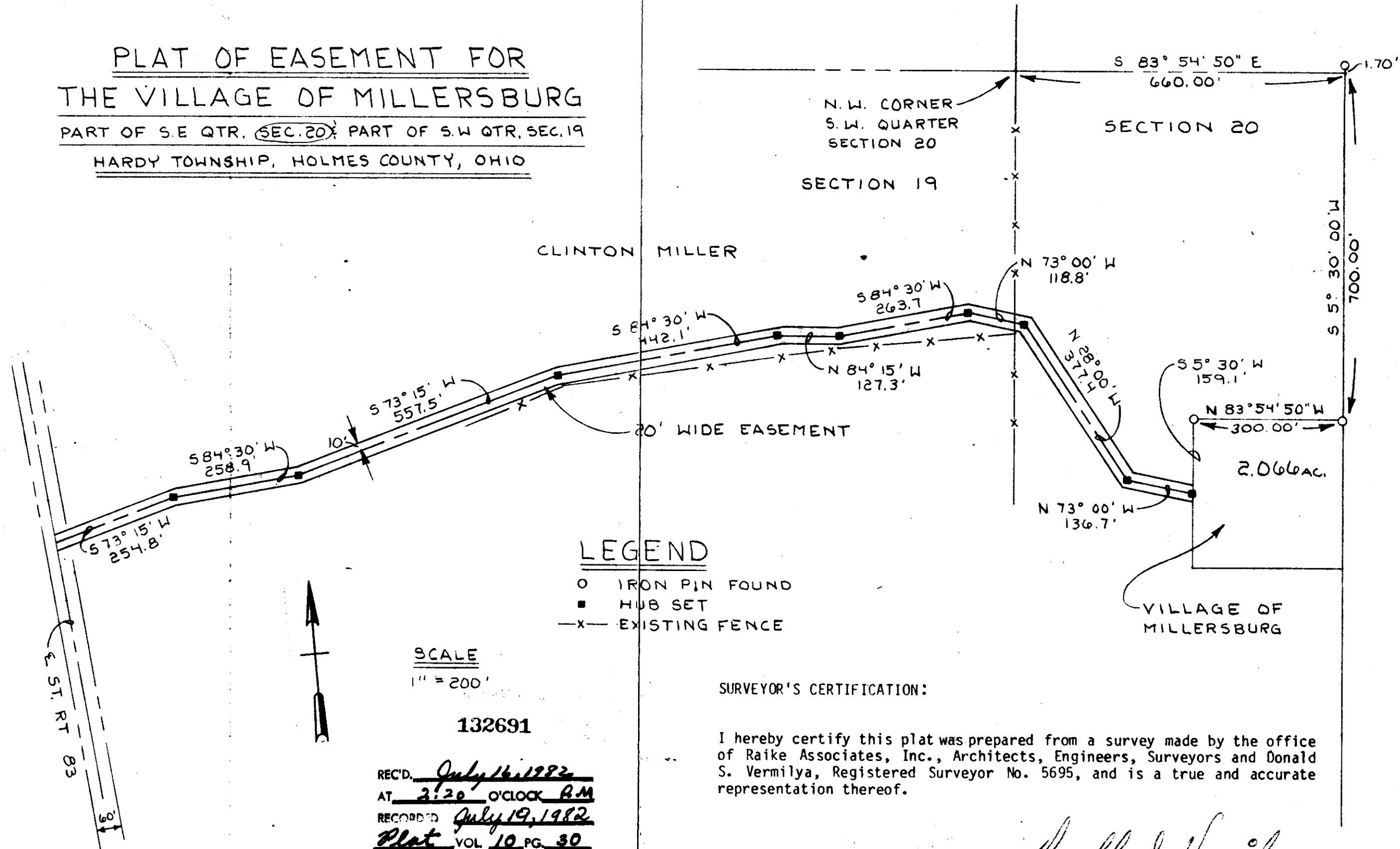


PLAT OF EASEMENT FOR
THE VILLAGE OF MILLERSBURG
 PART OF S.E. QTR. SEC. 20 PART OF S.W. QTR. SEC. 19
 HARDY TOWNSHIP, HOLMES COUNTY, OHIO



LEGEND

- o IRON PIN FOUND
- HUB SET
- x- EXISTING FENCE

SCALE

1" = 200'

132691

REC'D. July 16, 1982
 AT 2:20 O'CLOCK P.M.
 RECORDED July 19, 1982
Plat VOL 10 PG. 30
 Holmes Co. Ohio Fee: 3.20
Richard Strawn Recorder
 Deed Vol. 217; Pg. 662.

SURVEYOR'S CERTIFICATION:

I hereby certify this plat was prepared from a survey made by the office of Raiké Associates, Inc., Architects, Engineers, Surveyors and Donald S. Vermilya, Registered Surveyor No. 5695, and is a true and accurate representation thereof.

Donald S. Vermilya
 Donald S. Vermilya
 Registered Surveyor No. 5695

MAP OFFICE COPY

11-11