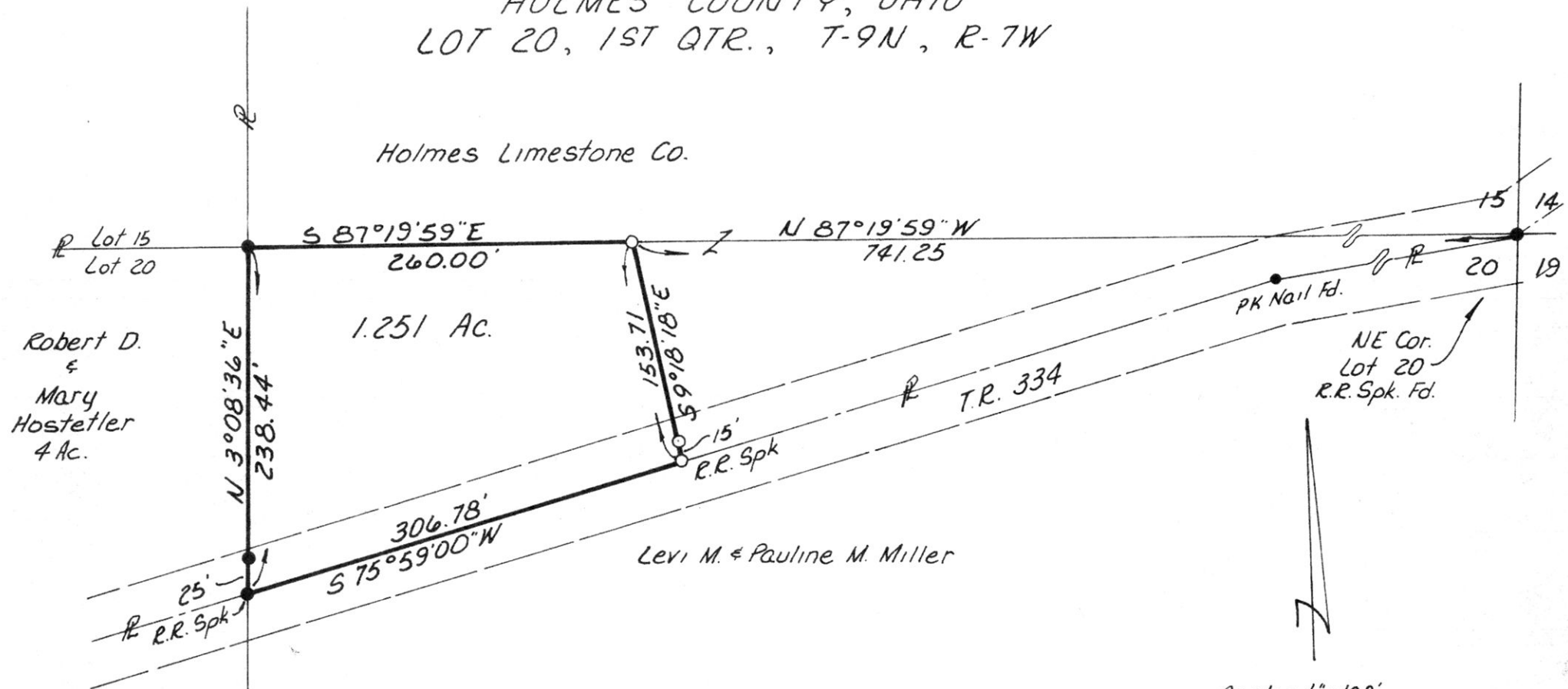


HARDY TOWNSHIP
 HOLMES COUNTY, OHIO
 LOT 20, 1ST QTR., T-9N, R-7W



This is A Plat Of A Survey To Transfer A
 1.251 Ac. Parcel From Holmes Limestone Co. To
 Robert D. & Mary Hostetler

I Certify This Plat To Be Correct To The Best
 Of My Knowledge

William H Long
 William H. Long R.S. 6505 Oct. 26, 1981
 R.D. 1, Box 69A
 Big Prairie, Ohio 44611

MAP OFFICE COPY

Scale: 1" = 100'

- I.P. Fd.
 - I.P. Set
- 132061

REC'D. June 1, 1982
 AT 1:32 O'CLOCK P.M.
 RECORDED June 2, 1982
 Plat Vol 10 PG. 15
 Holmes Co. Ohio Fee 2.00
Richard Thayer Recorder
 Deed Vol. 217-Pg. 181