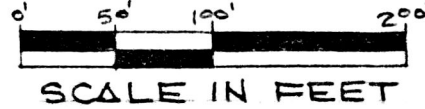


LEGEND:

- IRON PIN FOUND
- IRON PIN SET
- CORNER POST
- x "X" CUT IN CONCRETE

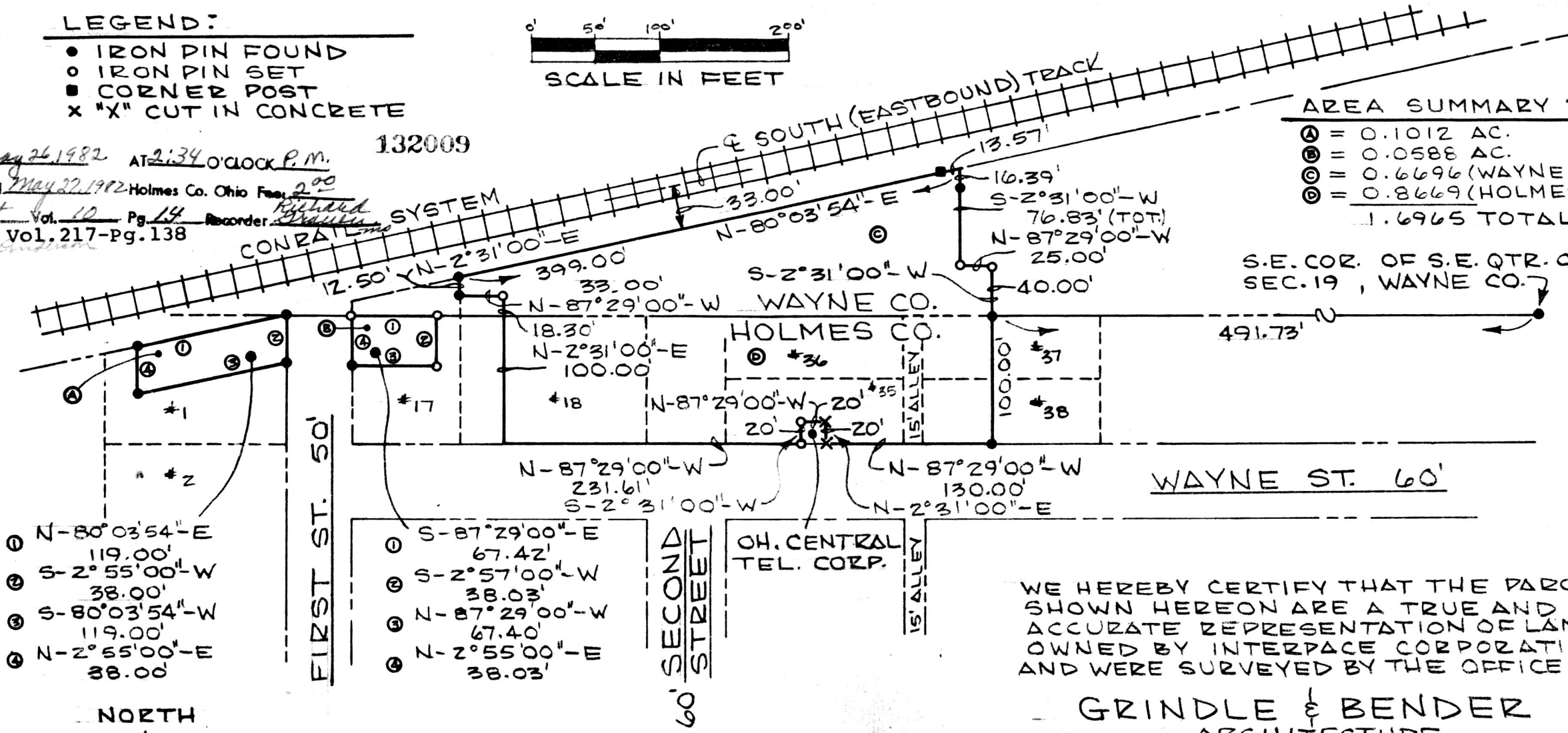


Rec'd. May 26, 1982 AT 2:34 O'CLOCK P.M.
 Recorded May 27, 1982 Holmes Co. Ohio Fees 2.00
 Plat Vol. 10 Pg. 14 Recorder Richard Draughn
 Deed Vol. 217-Pg. 138

132009

AREA SUMMARY:

- Ⓐ = 0.1012 AC.
- Ⓑ = 0.0588 AC.
- Ⓒ = 0.6696 (WAYNE CO.)
- Ⓓ = 0.8669 (HOLMES CO.)
- 1.6965 TOTAL AC.



- Ⓐ N-80°03'54"-E 119.00'
- Ⓑ S-2°55'00"-W 38.00'
- Ⓒ S-80°03'54"-W 119.00'
- Ⓓ N-2°55'00"-E 38.00'

- Ⓐ S-87°29'00"-E 67.42'
- Ⓑ S-2°57'00"-W 38.03'
- Ⓒ N-87°29'00"-W 67.40'
- Ⓓ N-2°55'00"-E 38.03'

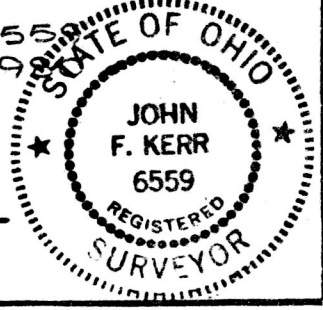
WE HEREBY CERTIFY THAT THE PARCELS SHOWN HEREON ARE A TRUE AND ACCURATE REPRESENTATION OF LANDS OWNED BY INTERPACE CORPORATION AND WERE SURVEYED BY THE OFFICE OF:

GRINDLE & BENDER
 ARCHITECTURE
 ENGINEERING • SURVEYING
 P.O. BOX 660 ASHLAND, OH. 44805
 AND

PLAT OF SURVEY FOR INTERPACE CORP.
 PART OF THE SOUTHEAST QUARTER OF SEC. 19 TOWNSHIP 18, RANGE 14, CLINTON TOWNSHIP, WAYNE COUNTY OHIO AND ALL OR PART OF LOTS NUMBERED 1, 17, 18, 35, 36, 37, 38 IN THE VILLAGE OF BIG PRAIRIE, HOLMES COUNTY OHIO.

JOHN F. KERR, R.S. #6559
 DURING OCTOBER 1982

John F. Kerr



NORTH

