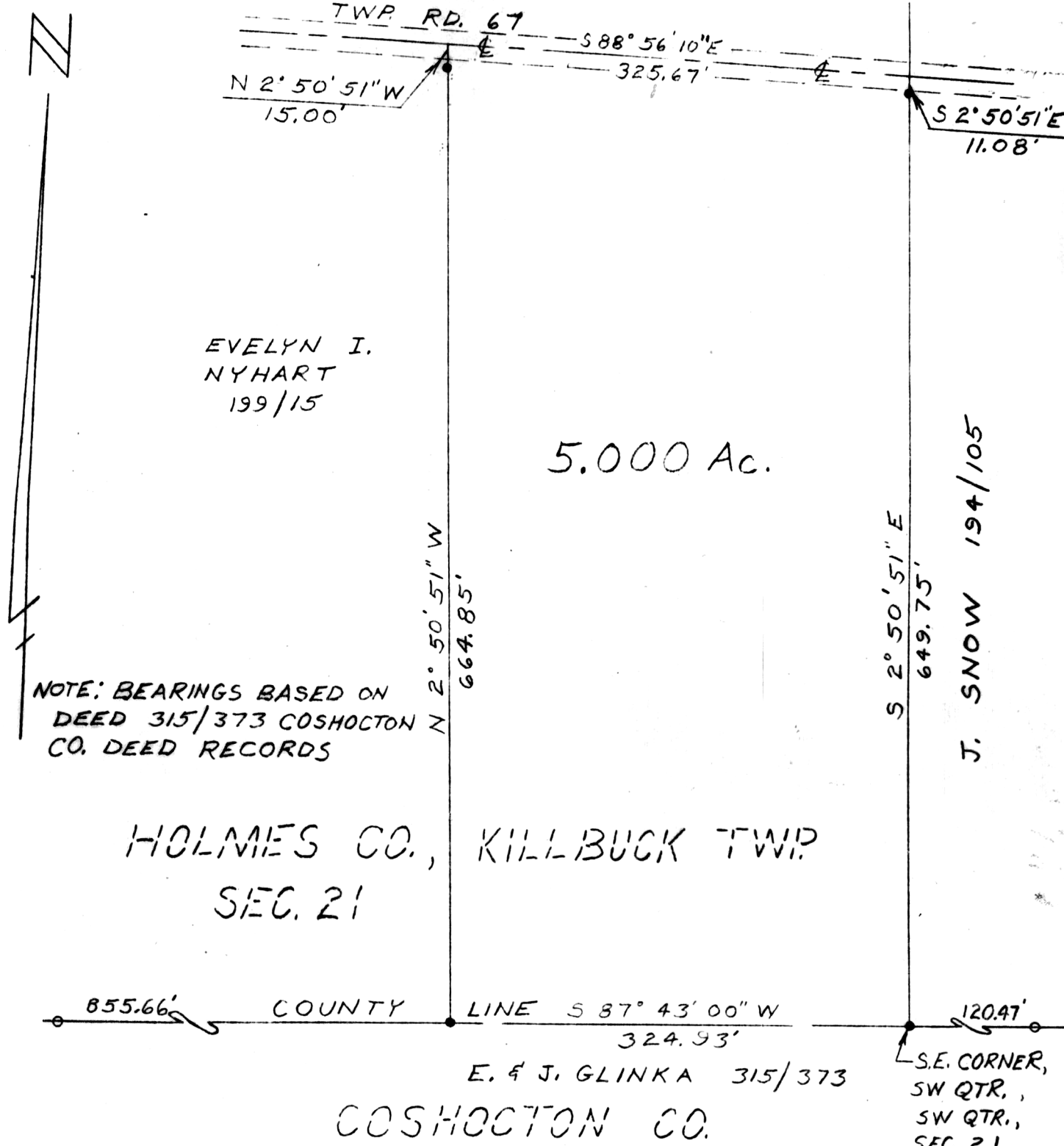


T. ARNOLD 178/749



EVELYN I.
NYHART
199/15

5.000 Ac.

J. SNOW 194/105

NOTE: BEARINGS BASED ON
DEED 315/373 COSHOCTON
CO. DEED RECORDS

HOLMES CO., KILLBUCK TWP.
SEC. 21

855.66' COUNTY LINE S 87° 43' 00" W 120.47'

324.93'

E. & J. GLINKA 315/373

COSHOCTON CO.

S.E. CORNER,
SW QTR.,
SW QTR.,
SEC. 21

- Set 3/4" x 30" steel rebar with aluminum caps
- Recovered Iron pipe

131133

Note: The following documents were used as a source of data for this survey.

Deeds: 178/749 Holmes County
 194/105 Holmes County
 199/15 Holmes County
 315/373 Coshocton County

Rec'd. Mar 17, 1982 AT 3:52 O'CLOCK P.M.
 Recorded Mar 18, 1982 Holmes Co. Ohio Fee: 2.00
plat Vol. 8 Pg. 871 Recorder: Richard Blaren
 Deed Vol. 216-Pg. 526
Re: Hines

Plat of a tract of land
 in
 Section 21
 Range 8W, Township 8N
 Killbuck Township
 Holmes County
 Ohio

Scale 1" = 100' March 3, 1982

0 100 200

George W. Stewart



REG. SURVEYOR #6357

MAP OFFICE COPY