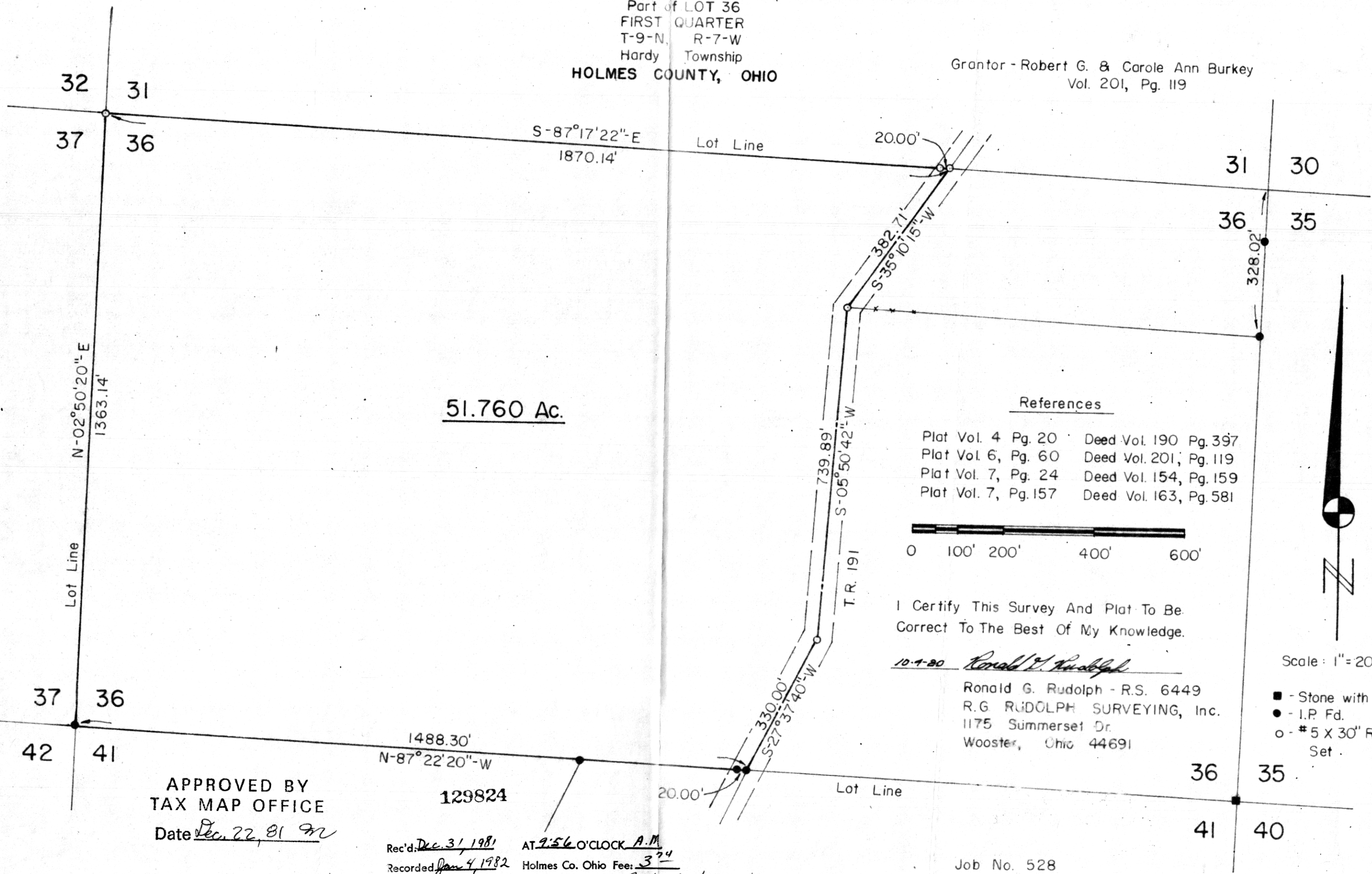


# SURVEY of a 51.760 ACRE PARCEL

Part of LOT 36  
FIRST QUARTER  
T-9-N, R-7-W  
Hardy Township  
HOLMES COUNTY, OHIO

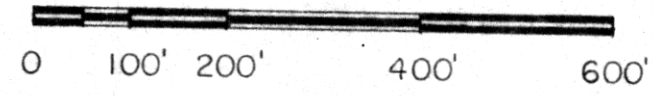
Grantor - Robert G. & Carole Ann Burkey  
Vol. 201, Pg. 119



51.760 Ac.

### References

- Plat Vol. 4 Pg. 20    Deed Vol. 190 Pg. 397
- Plat Vol. 6, Pg. 60    Deed Vol. 201, Pg. 119
- Plat Vol. 7, Pg. 24    Deed Vol. 154, Pg. 159
- Plat Vol. 7, Pg. 157    Deed Vol. 163, Pg. 581



I Certify This Survey And Plat To Be Correct To The Best Of My Knowledge.

*10-1-80* Ronald G. Rudolph

Ronald G. Rudolph - R.S. 6449  
R.G. RUDOLPH SURVEYING, Inc.  
1175 Summerset Dr.  
Wooster, Ohio 44691



Scale: 1" = 200'

- - Stone with "X" Fd.
- - I.P. Fd.
- - #5 X 30' Rebar Set

APPROVED BY  
TAX MAP OFFICE  
Date Dec. 22, 81 *ML*

Rec'd: Dec. 31, 1981 AT 9:56 O'CLOCK A.M.  
 Recorded: Jan 4, 1982 Holmes Co. Ohio Fee: 3.74  
 Plat Vol. 8 Pg. 850 Recorder Richard Menden  
11 X 17 X 2 Deed Vol. 215 - Pg. 802

Job No. 528

VOL 8 PAGE 850