

# VILLAGE OF MILLERSBURG

111-4

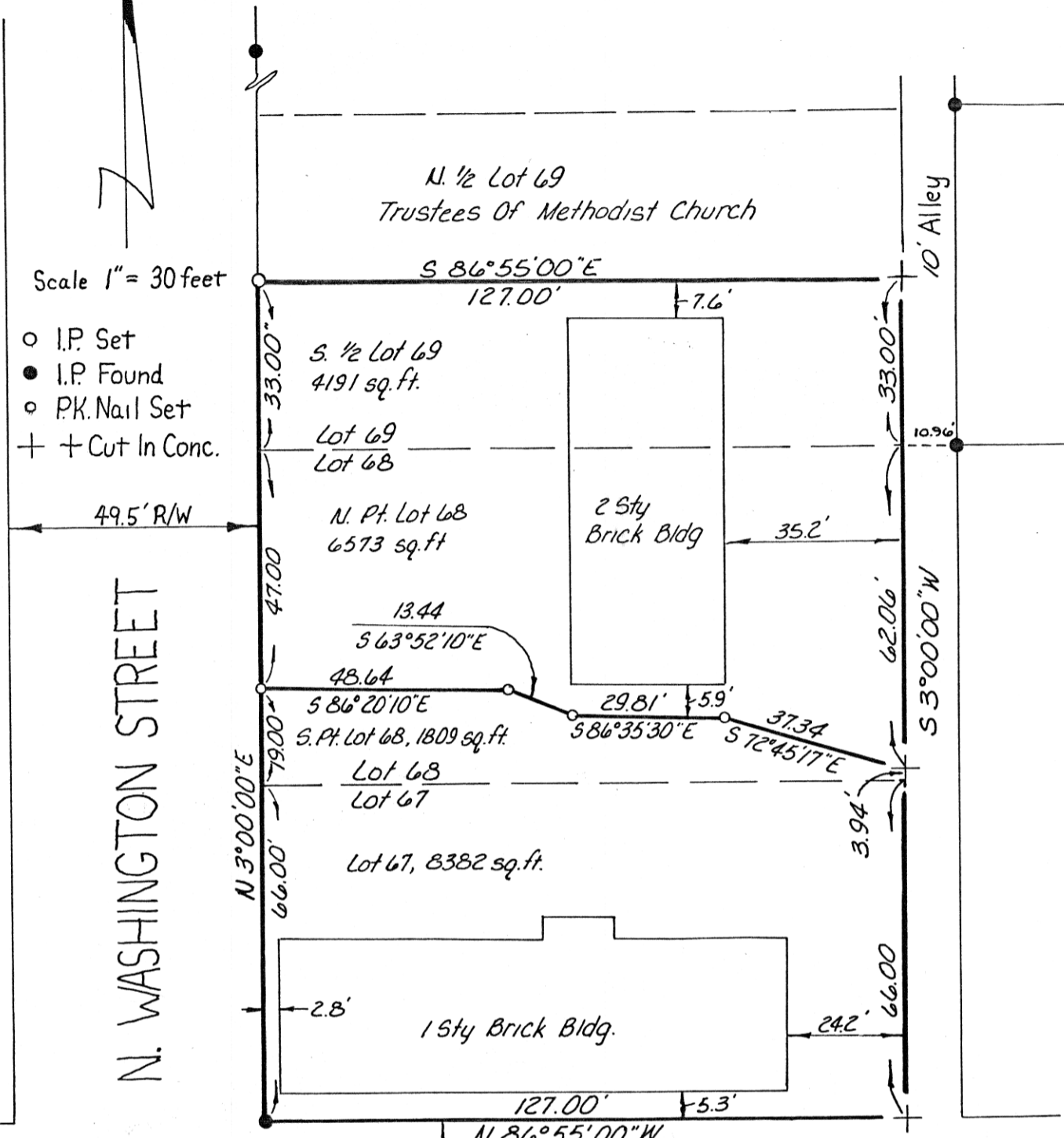
Lots 67, 68 & The South Half Of 69

PAUL F. REINING, OWNER



Scale 1" = 30 feet

- I.P. Set
- I.P. Found
- P.K. Nail Set
- + + Cut In Conc.



W. CLINTON STREET

I Certify This Plat To be Correct To The Best of My Knowledge.

William H Long Aug 10, 1981  
 William H. Long R.S. 6505 Date

I.P. Fd. 02' E. Per Rec. Data

129731

MAP OFFICE COPY

REC. December 23, 1981  
 AT 2:43 O'CLOCK P.M.  
 RECORD BY December 23, 1981  
Plat VOL. 8 PG. 848  
 Holmes Co. Ohio Fee: 2.00  
Richard Gravelle Recorder

Deed Vol. 215-Pg. 757  
 Deed Vol. 215-Pg. 759