

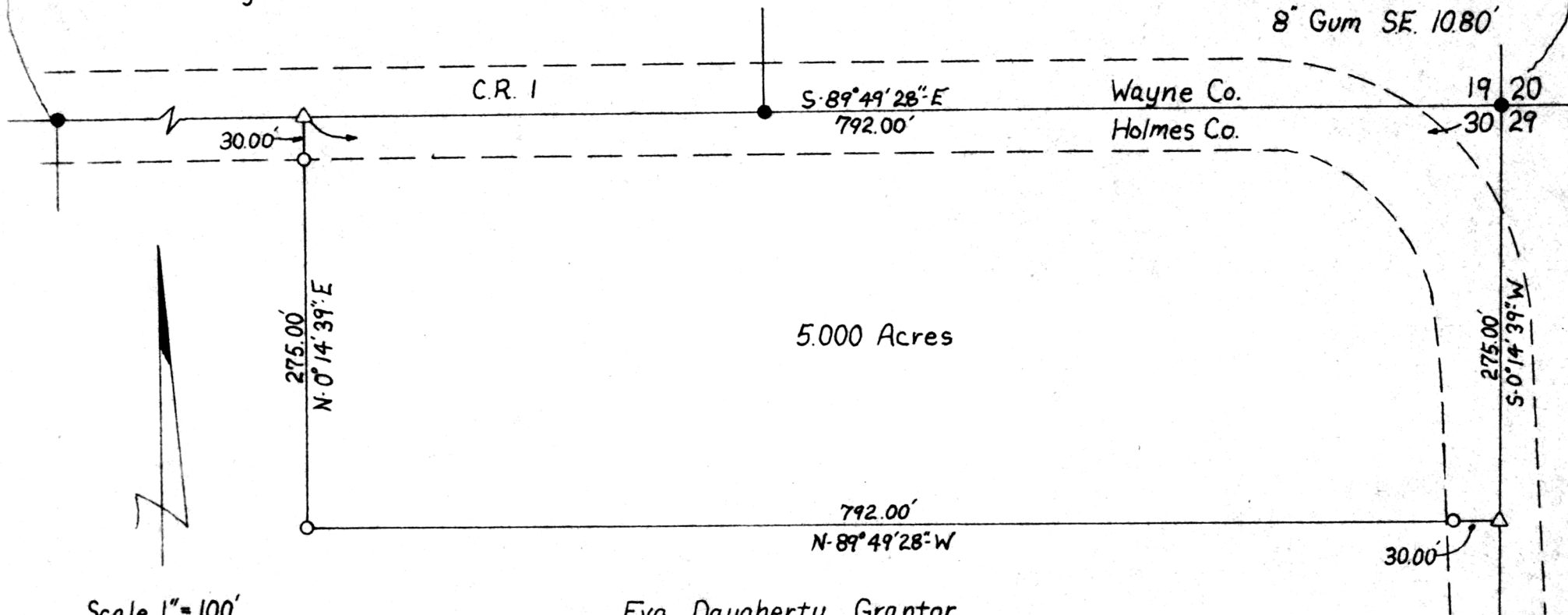
PRAIRIE TOWNSHIP
 HOLMES COUNTY OHIO
 NE. QTR. SEC. 30 T-14-N R-13-W

References:

- Power Pole NE. 89.70'
- 12" Steel Culv. SW. 15.90'
- Twin 6" W-Cherry SE 27.60'

References:

- Lg. Granite Stone E. 1.00'
- 6" Pine N.W. 46.10'
- 10" Hickory S.W 6.30'
- 8" Gum SE. 10.80'



Scale 1" = 100'

Eva Daugherty, Grantor

- △ RR. Spk. Set
- I.P. Set 3/4 dia. x 30"
- I.P. Fd.
- ✱ Cor. Post Used
127902

I Certify This Plat To Be Correct
 To The Best Of My Knowledge.

William H. Long Aug 14, 1981
 William H. Long R.S. 6505 Date

SE. Cor., North half,
 NE. Qtr., Sec 30

MAP OFFICE COPY

Rec'd. August 26, 1981 AT 4:11 O'clock P.M.
 Recorded Aug 27, 1981 Holmes Co. Ohio Fees 2.00
Plat Vol. 8 Pg. 289 Recorder Richard Drauer
Eva Daugherty
 Deed Vol. 214-Pg. 356