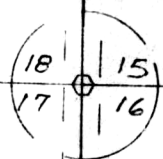
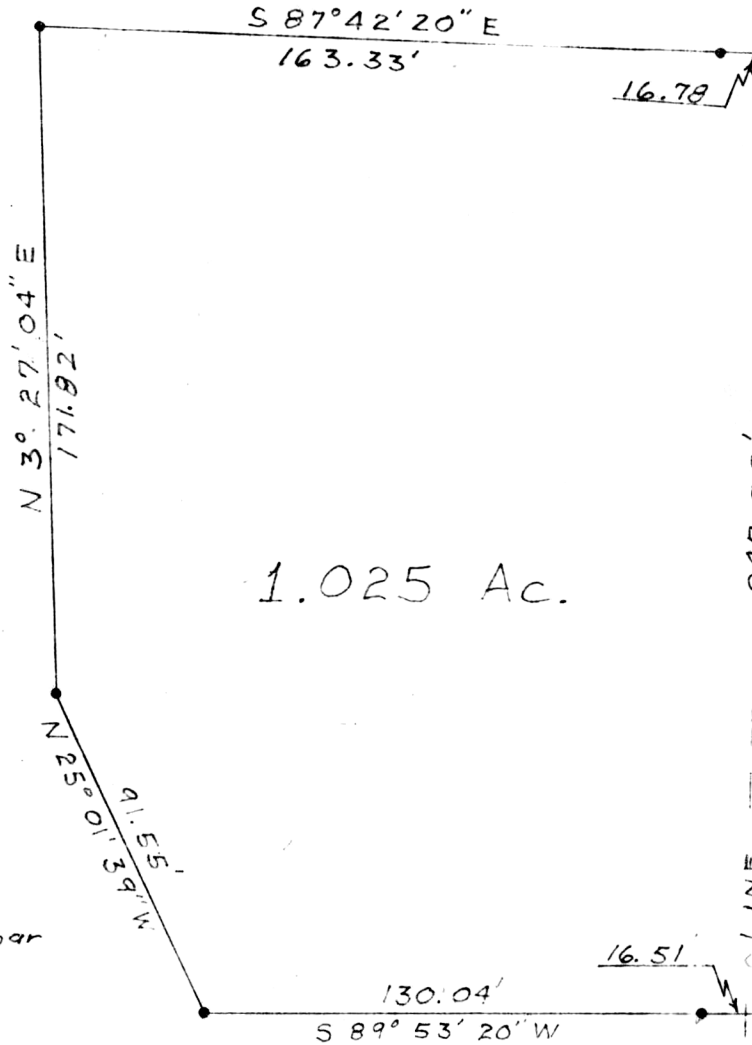


LOT LINE



N

R. T. Minuez
50/95



Twp. Rd. 630

● = Set 1" x 30" Rebar
○ = Spike

Plat of a Tract of Land
For
Greg Minuez
In
Lot 17 4th Qtr.
Range 6W, Township 10N
Salt Creek Township
Holmes County
Ohio

Scale: 1"=50' June 8, 1981

127660

REC'D. August 11, 1981
AT 2:53 O'CLOCK P.M.
RECORDED August 13, 1981
Plat VOL. 8 PG. 783
Holmes Co. Ohio Fee: 2.00
Richard Brown Recorder

Deed Vol. 214-Pg. 185

APPROVED BY
THE HOLMES COUNTY HEALTH DEPARTMENT
BY [Signature]
DATE 8-11-81

[Signature]
George W. Stewart, Registered Surveyor
#6357

MAP OFFICE COPY