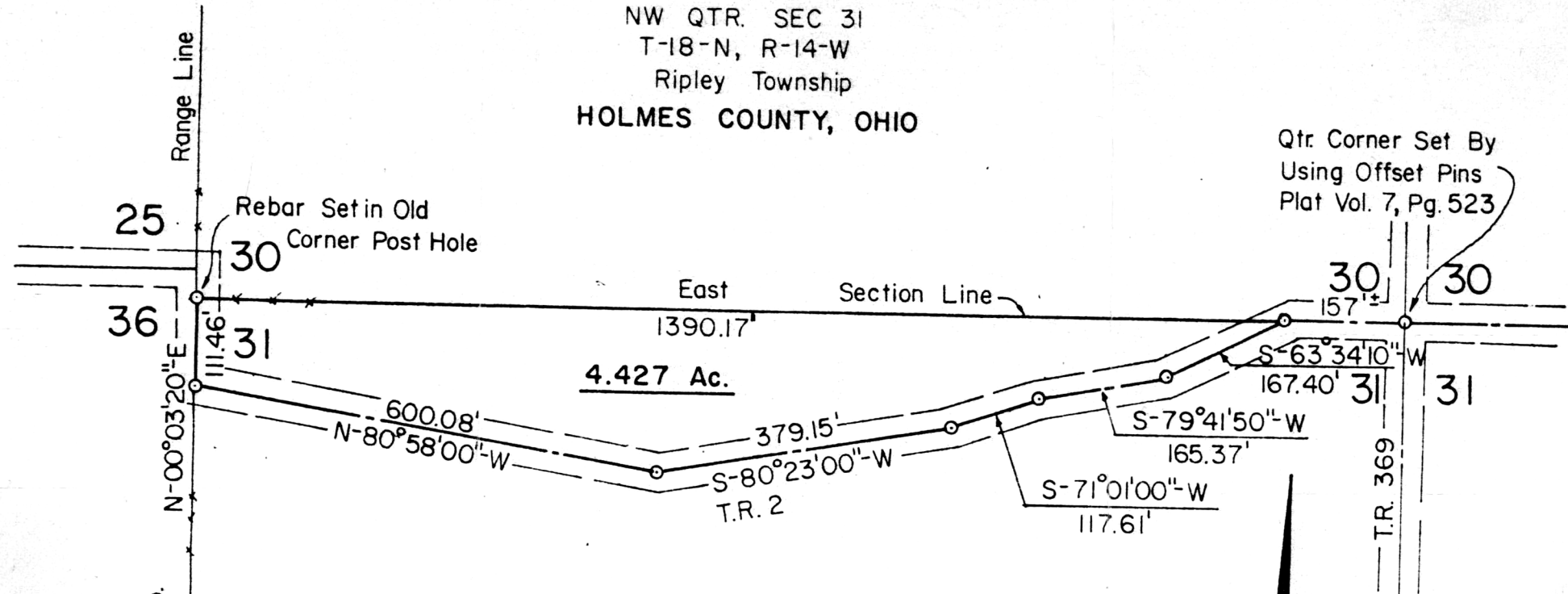


SHEET NO. 1 OF 1
JOB NO. 590

SURVEY of a 4.427 ACRE PARCEL

NW QTR. SEC 31
T-18-N, R-14-W
Ripley Township
HOLMES COUNTY, OHIO



Qtr. Corner Set By
Using Offset Pins
Plat Vol. 7, Pg. 523

References

- Deed Vol. 188, Pg. 103
- Deed Vol. 175, Pg. 328
- Deed Vol. 191 Pg. 536
- Plat Vol. 7, Pg. 523

Grantor - Robert & Linda K. White
Vol. 188, Pg. 103

o - 5/8" 30" Rebar Set

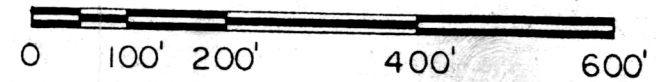
I Certify This Survey And Plat To Be
Correct To The Best Of My Knowledge

4781 *Ronald G. Rudolph*

Date 127562
Ronald G. Rudolph - R.S. 6449
R.G. RUDOLPH SURVEYING, Inc.
1175 Summerset Dr.
Wooster, Ohio 44691



Scale: 1" = 200'



BY J.E.K. DATE 4-07-81 SUBJECT FOR
CHKD. BY R.G.R. DATE

Rec'd. Aug 6, 1981 AT 11:40 O'CLOCK A.M.

Recorded Aug 6, 1981 Holmes Co. Ohio Fee: 2.00

Plat Vol. 8 Pg. 781 Recorder Richard Straney
Deed Vol. 213-Pg. 148

MAP OFFICE COPY