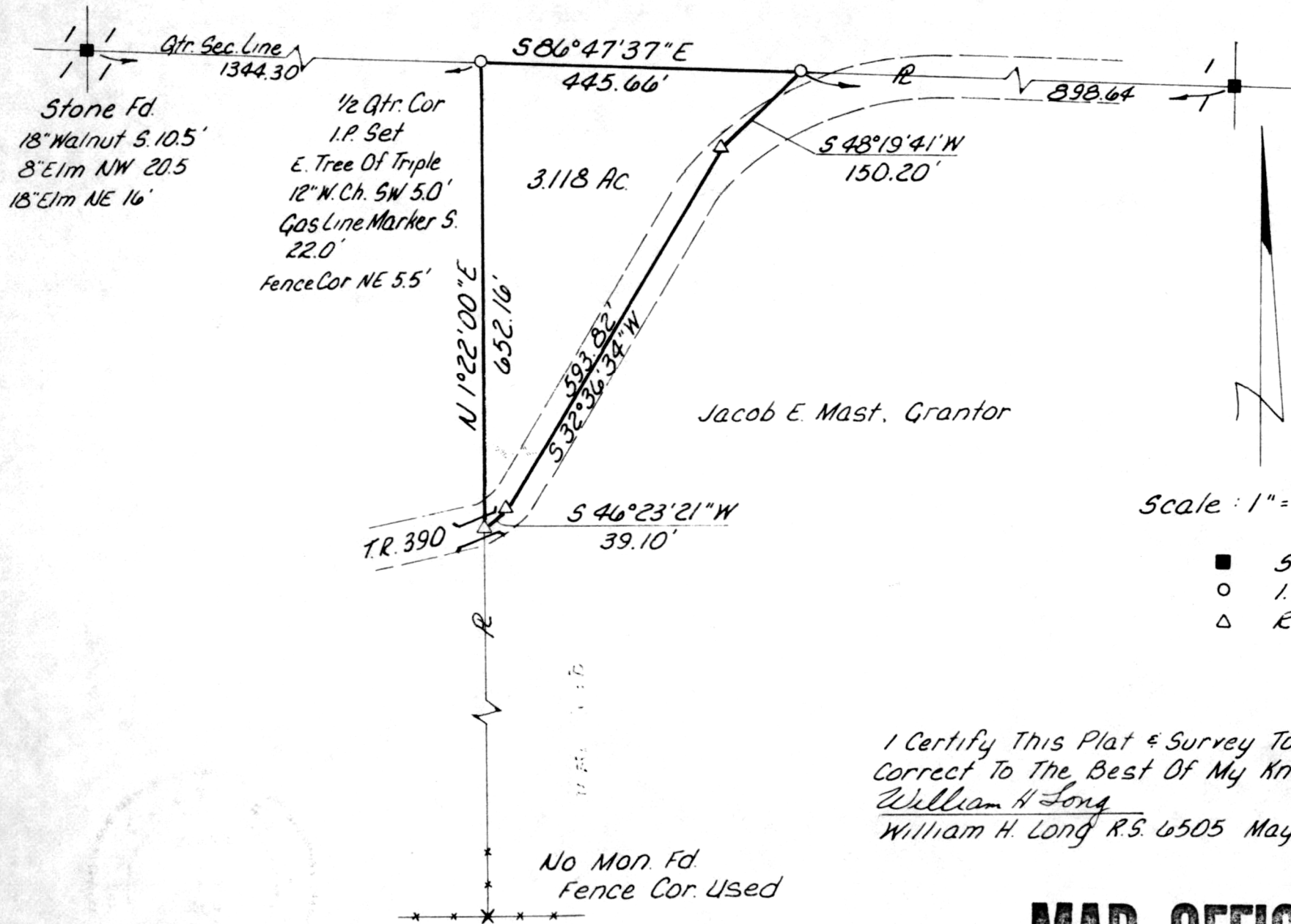


SALT CREEK TOWNSHIP
 HOLMES COUNTY, OHIO
 SE Qtr. Section 1, T-14N, R-12W



Scale: 1" = 200'

- Stone Fd.
- I.P. Set.
- △ R.R. Spk. Set

126850

REC'D. June 17th 1981
 AT 1:46 O'CLOCK P.M.
 RECORDED June 18, 1981
Plat VOL 8 PG. 762
 Holmes Co. Ohio Fee: 2⁰⁰
Richard Draughn Recorder

I Certify This Plat & Survey To Be
 Correct To The Best Of My Knowledge
William H Long
 William H. Long R.S. 6505 May 21, 1981

MAP OFFICE COPY