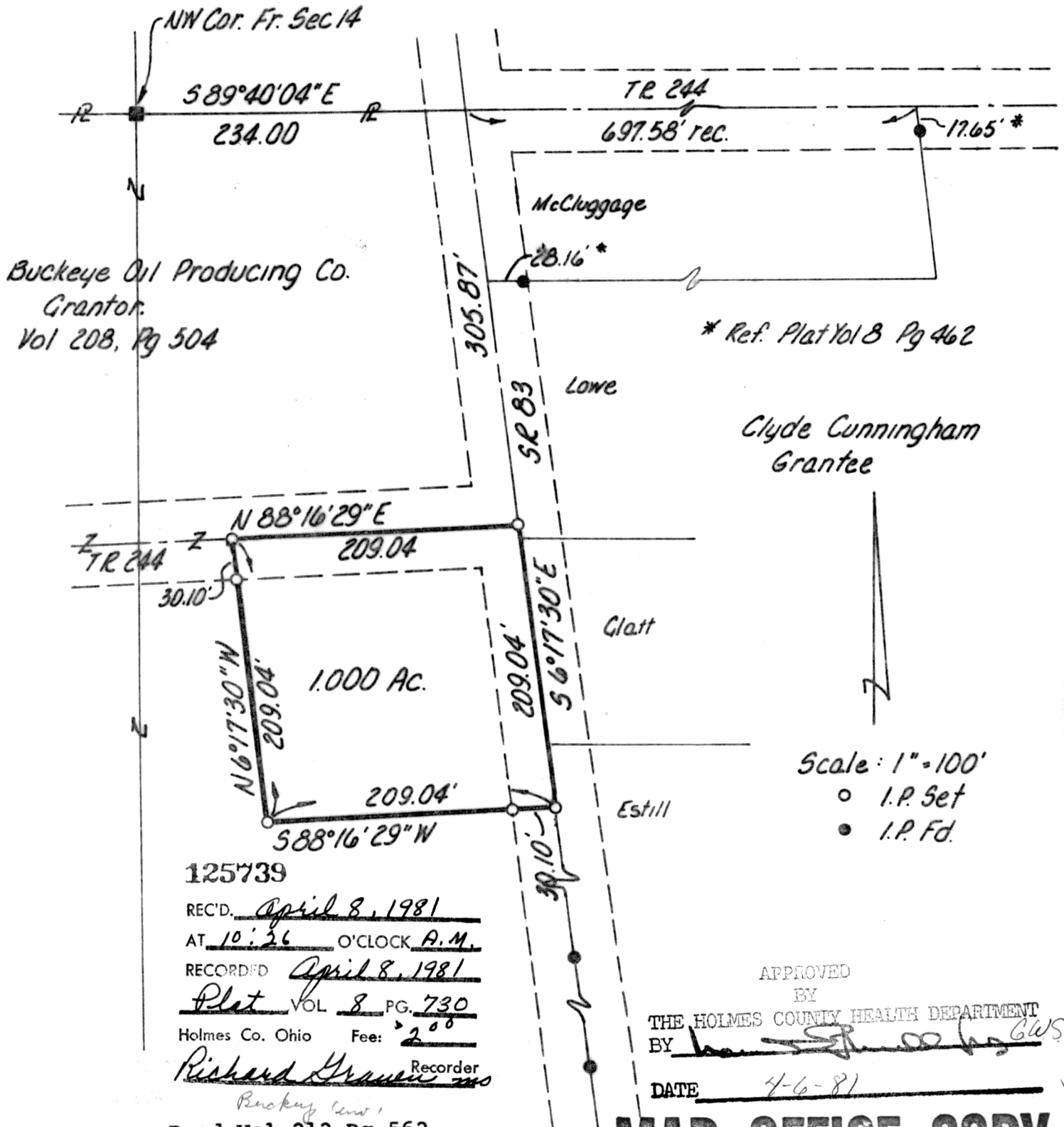


PRAIRIE TOWNSHIP  
 HOLMES COUNTY, OHIO  
 Fractional Section 14, Township 13-N, Range 13-W



125739  
 REC'D. April 8, 1981  
 AT 10:26 O'CLOCK A.M.  
 RECORDED April 8, 1981  
Plat VOL 8 PG. 730  
 Holmes Co. Ohio Fee: 2.00  
Richard Gravelle Recorder

APPROVED  
 BY  
 THE HOLMES COUNTY HEALTH DEPARTMENT  
 BY [Signature] GWS  
 DATE 4-6-81

Deed Vol. 212-Pg. 562  
 I Certify This Plat To Be Correct To The  
 Best Of My Knowledge  
William H. Long Dec. 24, 1980  
 William H. Long R.S. 6505

**MAP OFFICE COPY**  
 P. Miller