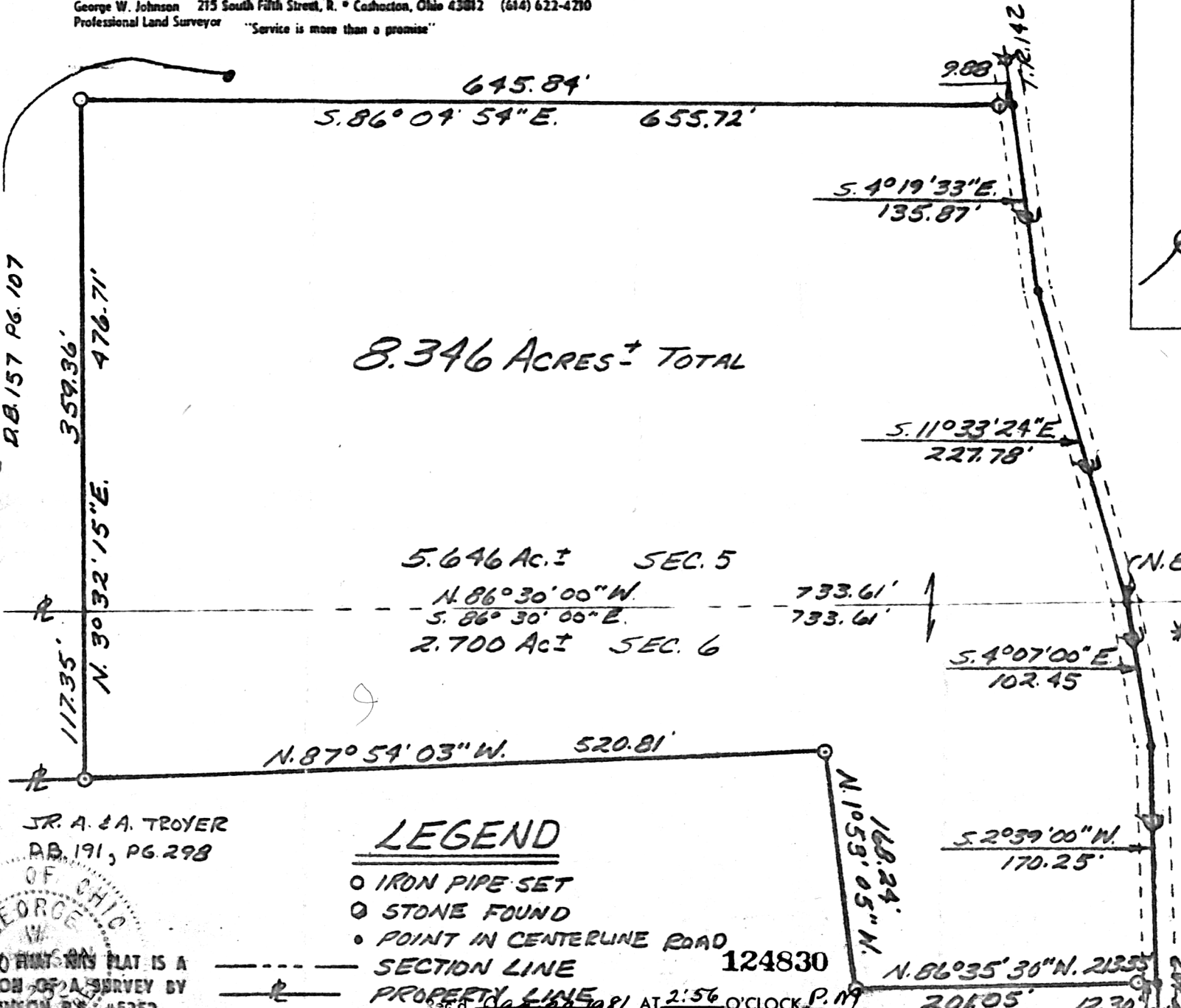


Buckeye Land Surveying, Inc.

George W. Johnson 215 South Fifth Street, R. • Coshocton, Ohio 43012 (614) 622-4210
Professional Land Surveyor "Service is more than a promise"

MAP OFFICE COPY

HOLMES LAND CO.
R.B. 157 PG. 107



8.346 ACRES ± TOTAL

5.646 Ac. ± SEC. 5

2.700 Ac. ± SEC. 6

LEGEND

- IRON PIPE SET
- STONE FOUND
- POINT IN CENTERLINE ROAD

--- SECTION LINE 124830

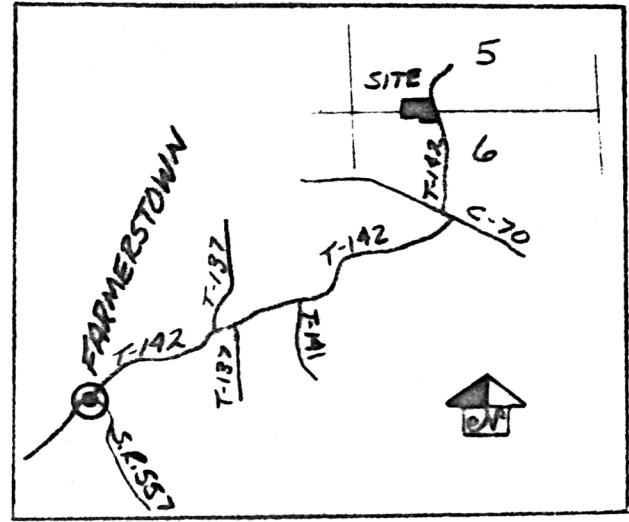
— PROPERTY LINE

I HEREBY CERTIFY THAT THIS PLAT IS A TRUE DELINEATION OF A SURVEY BY GEORGE W. JOHNSON, R.S. #5252

George W. Johnson

Deed Vol. 212 Pg. 12

Recorded Jan 21, 1981 at 2:56 O'CLOCK P.M.
Plat Vol. 8 Pg. 709 Recorder Richard Weaver



LOCATION MAP
"NO SCALE"

S.E. CORNER
S.W. QUARTER
SEC. 5

* 663.96'
N. 86° 30' 00" N.

* DISTANCE NOT FIELD SURVEYED
FROM SURVEY RECORD 2, PAGE 258
HOLMES COUNTY RECORDS.

JUNIOR A. TROYER, ET. UX.

BEING A PART OF THE SOUTHWEST QUARTER OF SECTION 5 AND BEING A PART OF THE NORTHWEST QUARTER OF SECTION 6, TOWNSHIP 8N., RANGE 4W., UNITED STATES MILITARY LANDS CLARK TOWNSHIP HOLMES COUNTY, OHIO

SCALE: 1"=100' DATE: JULY, 1979
DRAWN BY: R. WAYNE LIGHT, E.T.