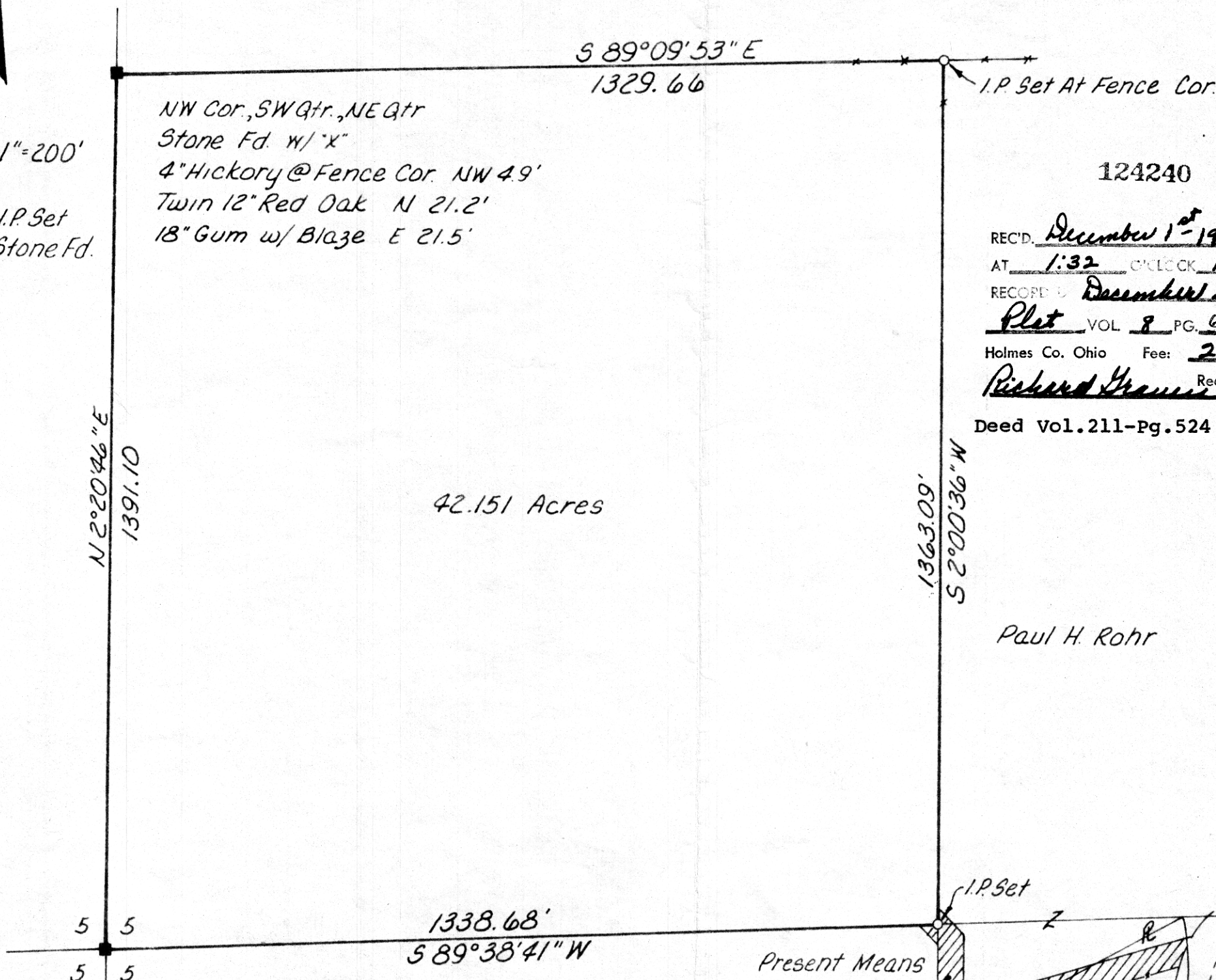


Surveyed For Corliss Mackey

RICHLAND TOWNSHIP  
SW Qtr., NE Qtr. Sec. 5, T-8N, R-8W  
Holmes County, Ohio

Scale: 1"=200'

- I.P. Set
- Stone Fd.



NW Cor., SW Qtr., NE Qtr  
 Stone Fd. w/ "x"  
 4" Hickory @ Fence Cor. NW 4.9'  
 Twin 12" Red Oak N 21.2'  
 18" Gum w/ Blaze E 21.5'

124240

REC'D. December 1<sup>st</sup> 1980  
 AT 1:32 O'CLOCK P.M.  
 RECORDED December 2, 1980  
Plet VOL. 8 PG. 684  
 Holmes Co. Ohio Fee: 2.00  
Richard Strauss Recorder

Deed Vol. 211-Pg. 524

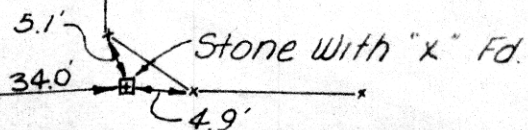
42.151 Acres

Paul H. Rohr

SW Cor., NE Qtr. Sec 5

References:

Barbed Wire Fence



1338.68'  
 S 89°38'41" W

Paul H. Rohr

Present Means  
Of Access

Arleigh & Lola Mae  
Dewitt

I Certify This Survey To Be Correct  
 To The Best Of My Knowledge

William H Long  
 William H Long R.S. 6505

T.E. 36

MAP OFFICE COPY