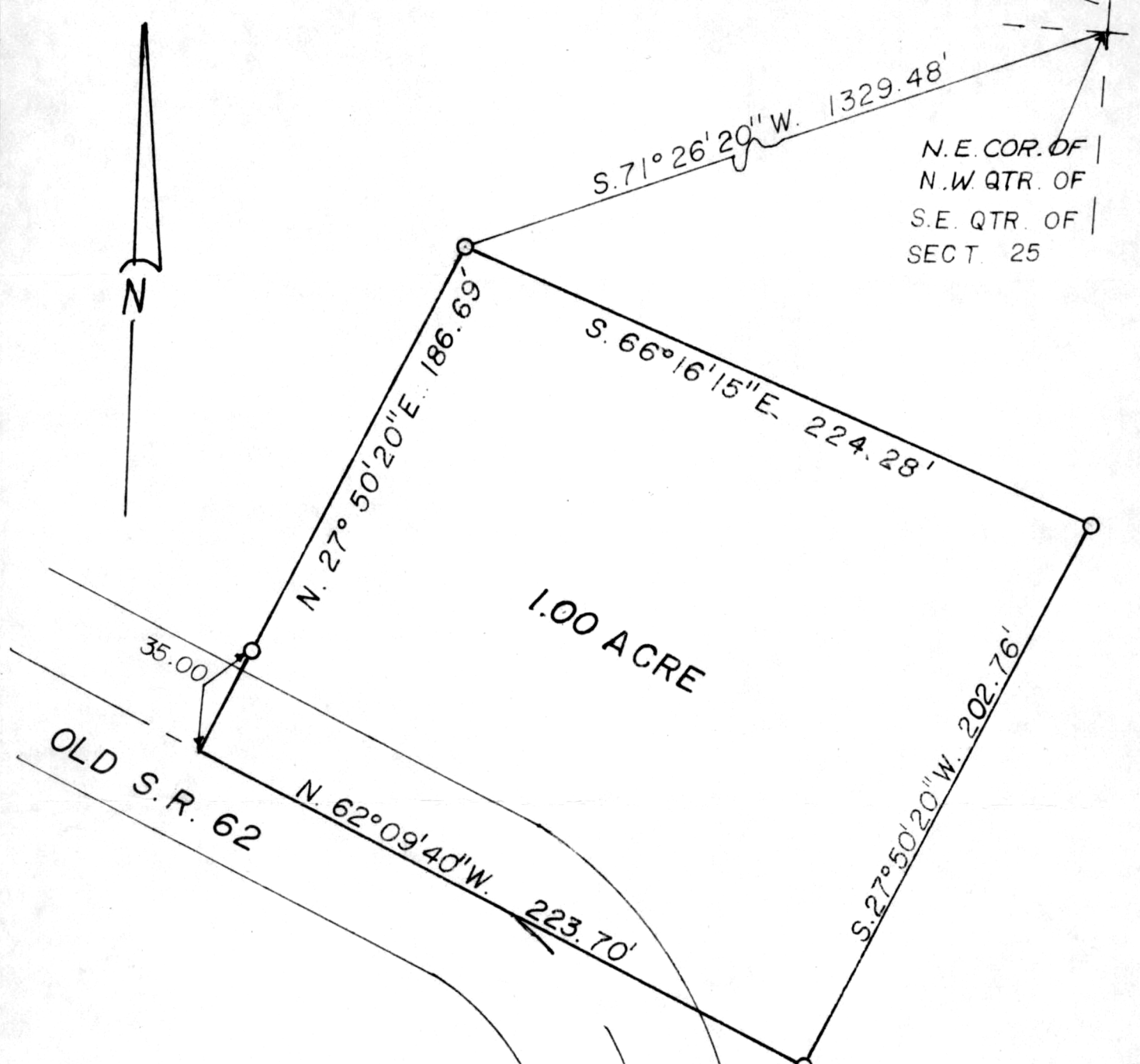


PART OF THE S.E. QTR. SECT. 25, T.8, R.9,
 RICHLAND TWP. HOLMES CO. OHIO



N.E. COR. OF
 N.W. QTR. OF
 S.E. QTR. OF
 SECT. 25



1.00 ACRE

OLD S.R. 62

○ IRON PIN SET.

1 IN. = 50 FT.

123914

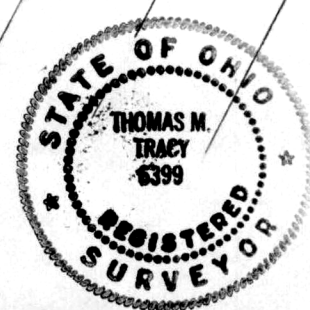
REC'D. November 5, 1980
 AT 11:23 O'CLOCK A.M.
 RECORDED November 5, 1980
Plat VOL 8 PG. 680
 Holmes Co. Ohio Fee: 2.00
Richard Shaver Recorder

Deed vol. 211-Pg. 345

I CERTIFY THIS PLAT TO
 BE A TRUE COPY OF A
 SURVEY MADE FOR LEROY
 BROWN,

Thomas M. Tracy 6399
 THOMAS M. TRACY

BARNES & TRACY SURVEYORS
 MT. VERNON, OHIO SEPT., 1980



MAP OFFICE COPY