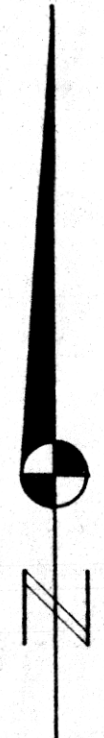
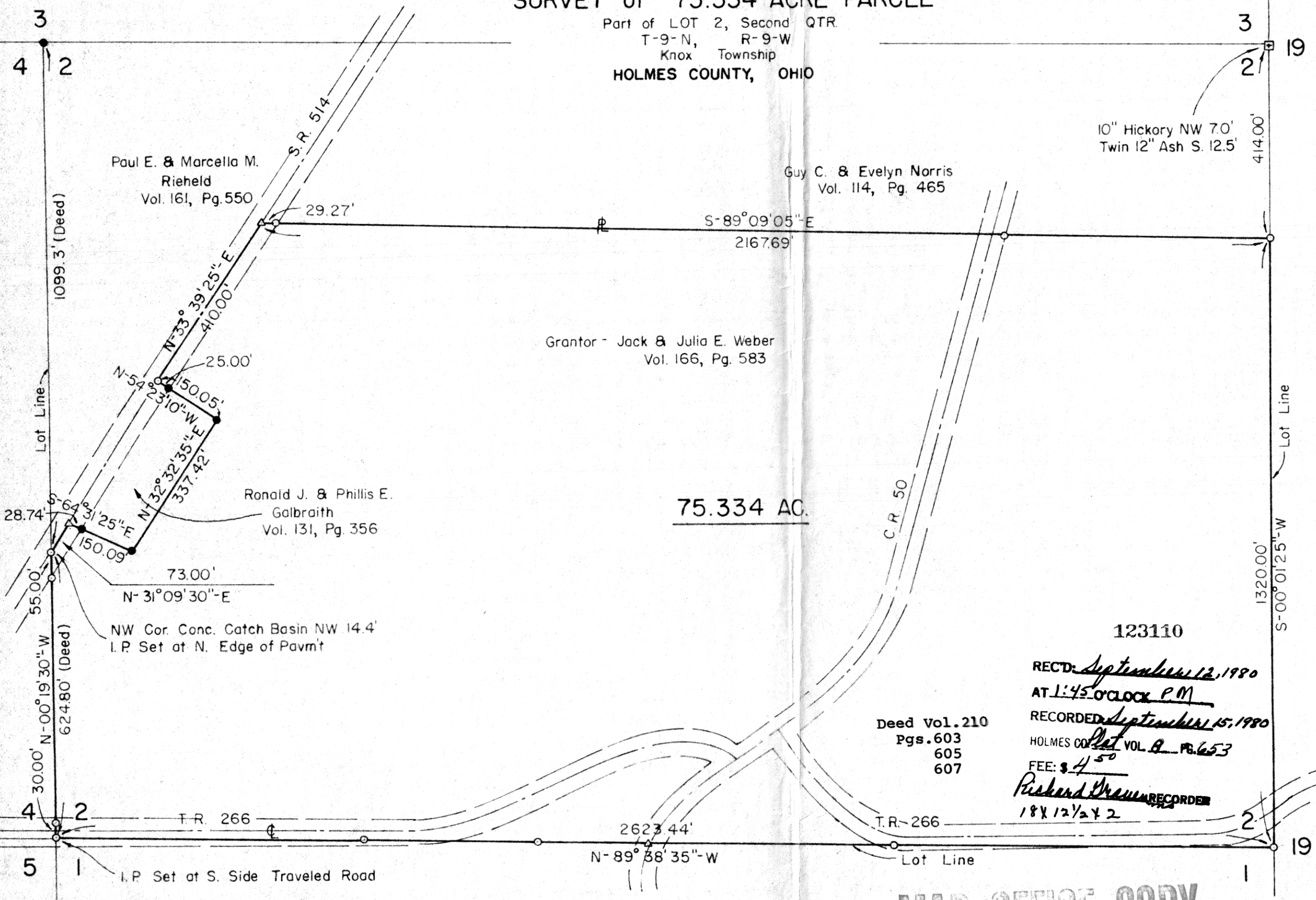


# SURVEY of 75.334 ACRE PARCEL

Part of LOT 2, Second QTR.  
T-9-N, R-9-W  
Knox Township  
HOLMES COUNTY, OHIO



Scale: 1" = 200'

- ⊠ - Stone with "X" Fd.
- - I.P. Fd.
- - I.P. Set
- △ - RR Spk. Set

**75.334 AC.**

123110

REC'D: *September 12, 1980*  
AT 1:45 O'CLOCK P.M.  
RECORDED: *September 15, 1980*  
HOLMES CO. *Plat VOL. B PG. 653*  
FEE: \$ *4.50*  
*Richard Drennon* RECORDER  
*18X 12 1/2 x 2*

I Certify This Survey And Plat To Be Correct To The Best Of My Knowledge.

*Ronald G. Rudolph*  
Ronald G. Rudolph - R.S. 6449  
R.G. RUDOLPH SURVEYING, Inc.  
1175 Summerset Dr.  
Weaver, Ohio 44691

Job No. 464

MAP OFFICE COPY