

APPROVED BY
TAX MAP OFFICE

Date August 20, 1980

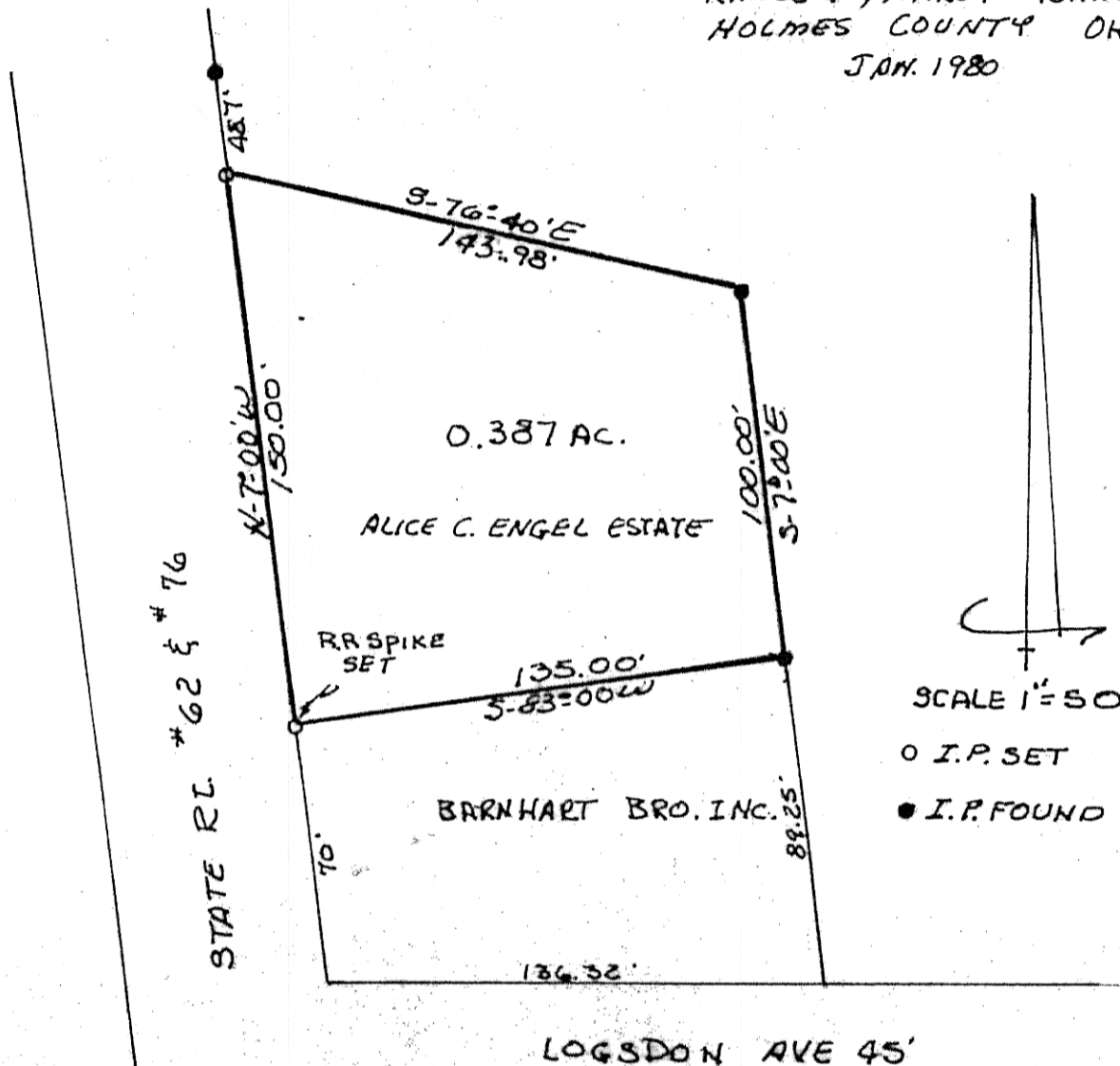
BB

SURVEY PLAT OF 0.387 AC.

ALICE C. ENGEL ESTATE

LOGSDON SUBDIVISION
OF O.L. #106 IN NORTH EAST QTR.
OF SECTION 19, TOWNSHIP 9
RANGE 7, HARDY TOWNSHIP
HOLMES COUNTY OHIO

JAN. 1980



SCALE 1" = 50'

○ I.P. SET

● I.P. FOUND

122813

REC'D: August 20, 1980

AT 3:06 O'CLOCK P.M.

RECORDED: August 21, 1980

HOLMES CO. Plat Vol. 8 PG. 646

FEE: \$ 2.00

Richard M. Mendenhall RECORDER

I CERTIFY THIS SURVEY TO BE CORRECT
TO THE BEST OF MY KNOWLEDGE

Clyde E. Pridemore
CLYDE E. PRIDEMORE S.S. #4900

