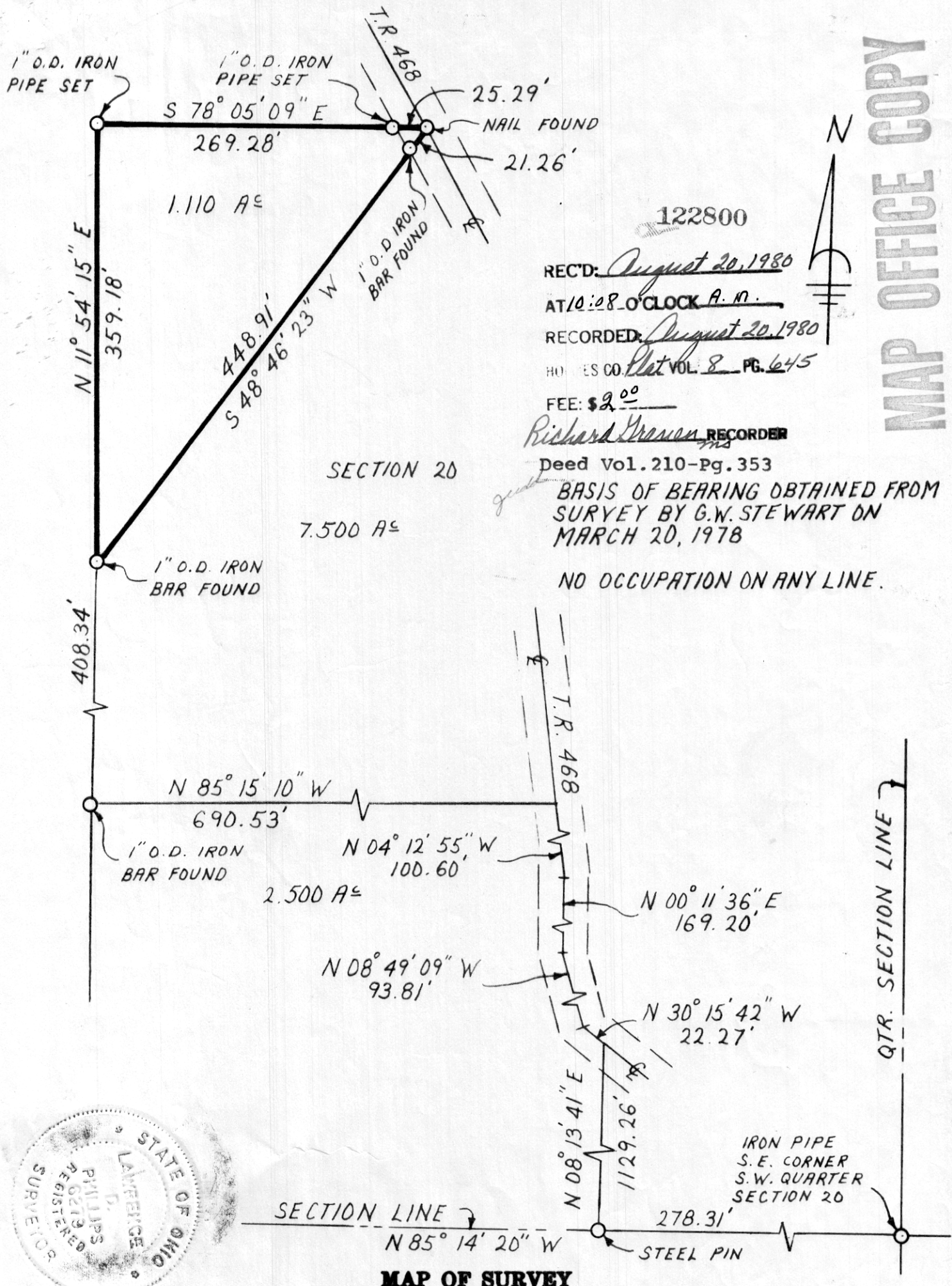
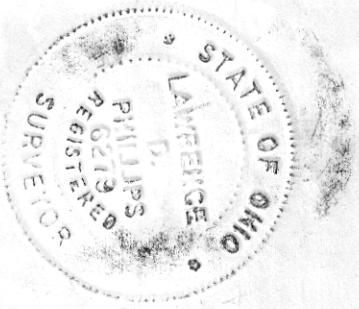


MAP OFFICE COPY



122800  
 REC'D: August 20, 1980  
 AT 10:28 O'CLOCK A.M.  
 RECORDED: August 20, 1980  
 HOURS CO. Plat Vol. 8 PG. 645  
 FEE: \$2.00  
 Richard Yrean RECORDER

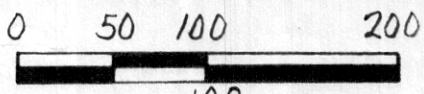
SECTION 20  
 7.500 A<sup>c</sup>  
 Deed Vol. 210-Pg. 353  
 BASIS OF BEARING OBTAINED FROM SURVEY BY G.W. STEWART ON MARCH 20, 1978  
 NO OCCUPATION ON ANY LINE.



SECTION LINE  
 N 85° 14' 20" W  
**MAP OF SURVEY**

I hereby certify that this is a correct survey made by me of A 1.110 ACRE TRACT SITUATED IN THE TOWNSHIP OF HARDY, COUNTY OF HOLMES, STATE OF OHIO AND BEING PART OF THE S.W. QTR. OF SECTION 20 (T-9, R-7)

This certification made by me this 11<sup>TH</sup> day of JULY 19 80



SCALE: 1 INCH = 100 FEET

Lawrence D. Phillips  
 LAWRENCE D. PHILLIPS P.S. #6279  
 HAMMONTREE & ASSOCIATES, LTD.  
 CONSULTING ENGINEERING & SURVEYING  
 CANTON - AKRON, OHIO

