

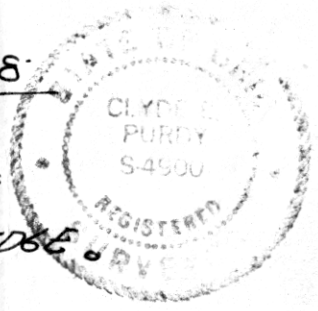
BERLIN TOWNSHIP  
 N.W. QTR. SEC. 7  
 TWP. 9 RANGE 5  
 HOLMES COUNTY  
 OHIO

JULY 1980

SURVEY FOR TIMBER EZE INC.  
 R# 5  
 MILLERSBURG, O.  
 122742

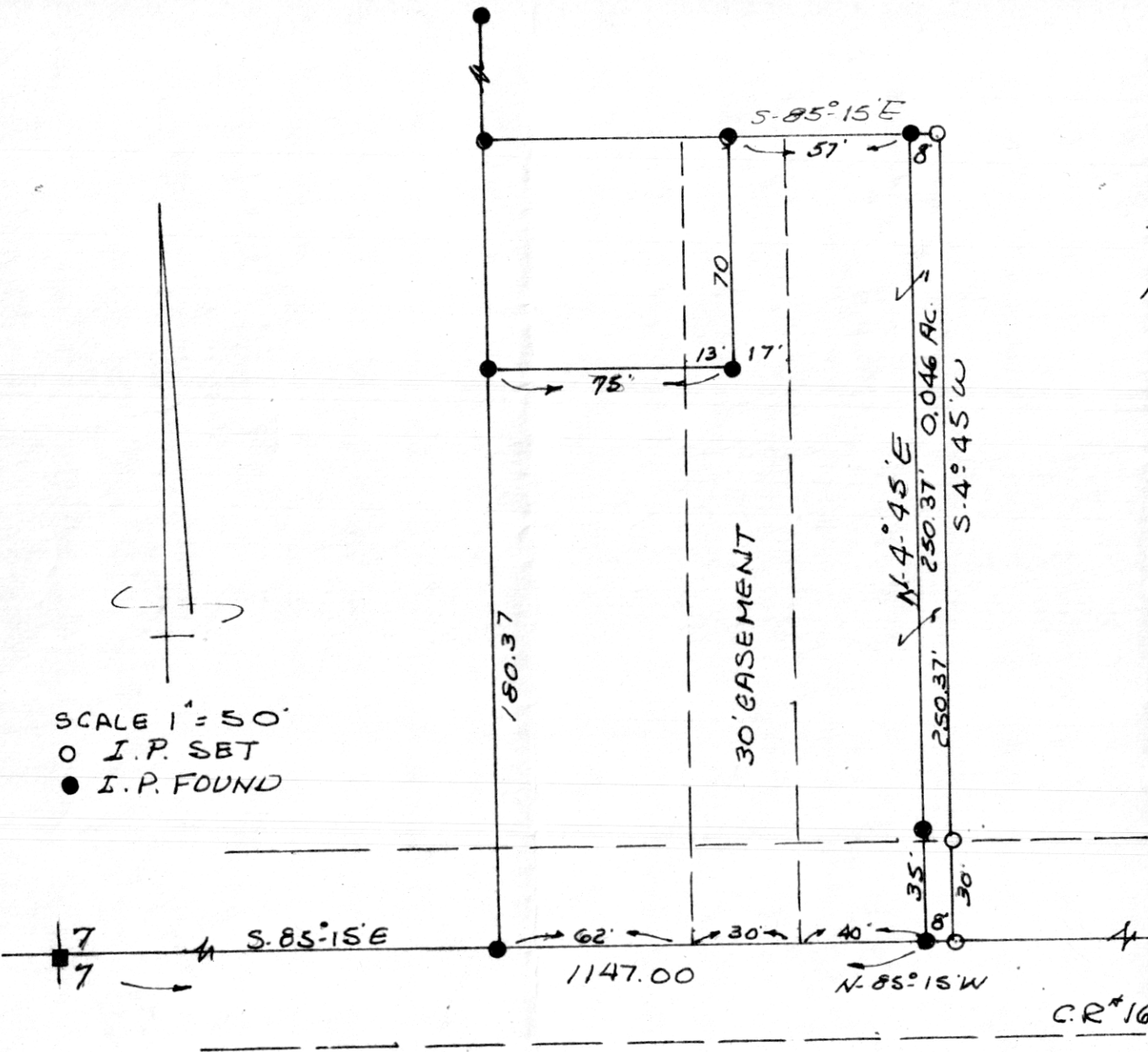
REC'D: August 14, 1980  
 AT 3:46 O'CLOCK P.M.  
 RECORDED: August 15, 1980  
 HOLMES CO. Plat VOL 8 PG. 640  
 FEE: \$ 2.00

Richard Green RECORDER  
 Deed Vol. 210-Pg. 306



I CERTIFY THIS SURVEY TO BE  
 CORRECT TO THE BEST OF MY KNOWLEDGE

Clyde E. Purdy  
 CLYDE E. PURDY R.S. #4900



SCALE 1" = 50'  
 O I.P. SET  
 ● I.P. FOUND

Exhibit "A"

MAP OFFICE COPY

C.R. #168