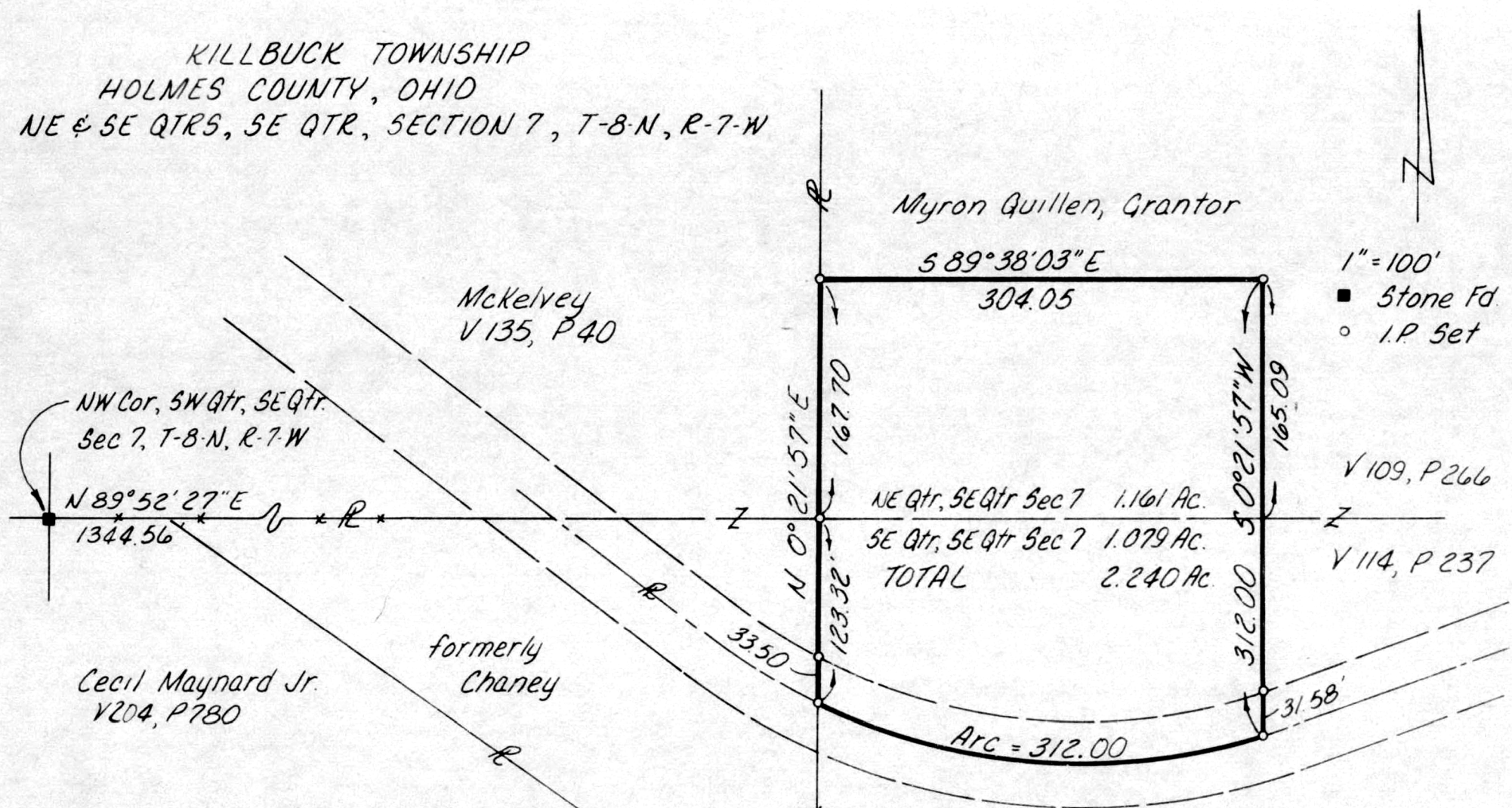


KILLBUCK TOWNSHIP
 HOLMES COUNTY, OHIO
 NE & SE QTRS, SE QTR, SECTION 7, T-8-N, R-7-W



1" = 100'
 ■ Stone Fd.
 ○ I.P. Set

Plat Of A Survey Completed May 28, 1980
 For Cecil Maynard Sr. Grantee

I Certify This Survey To Be Correct To The
 Best Of My Knowledge

William H Long
 William H. Long R.S. 1145

MAP OFFICE COPY

Curve Data
 $\Delta = 42^\circ 52' 08''$
 $R = 417.00$
 Chord = 304.77
 Chd. Brg. N 85°41'14"W

Cool
 V204, P391

122030

APPROVED
 BY [Signature] G.W.S.
 THE HOLMES COUNTY HEALTH DEPARTMENT

DATE 6-6-80
 NON-RESIDENTIAL

REC'D June 13, 1980
 AT 11:25 O'CLOCK A.M.
 RECORDED June 13, 1980
 HOLMES CO. Plat VOL. 8 PG. 612
 FEE: \$ 2.00

Richard [Signature]
 Deed Vol. 209-Pg. 681