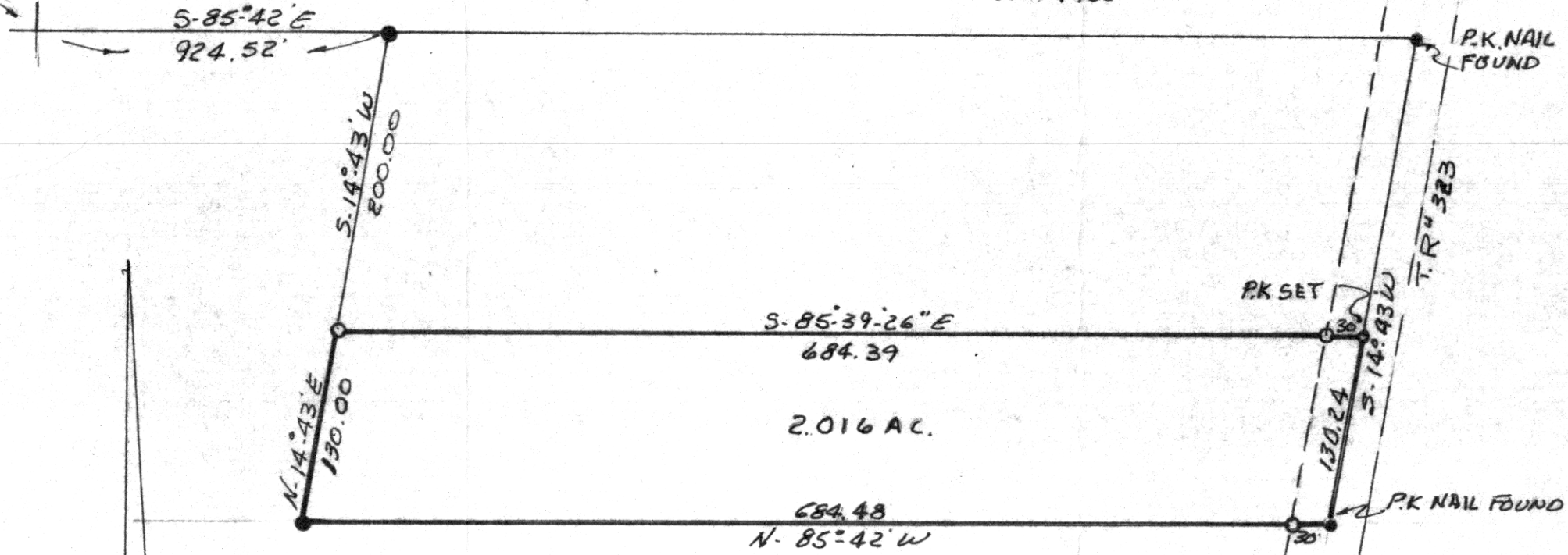


PLAT OF 2.016 AC. TRACT  
 PART OF LOT #23 1<sup>ST</sup> QTR.  
 TWP. 9-N RANGE 7-W  
 HARDY TOWNSHIP  
 HOLMES COUNTY  
 OHIO

JAN. 1980

N.W. COR, LOT #23  
 1<sup>ST</sup> QTR. TWP. 9-N  
 R-7-W

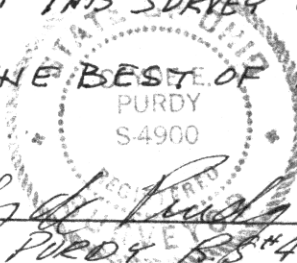


121279

I CERTIFY THIS SURVEY TO BE

CORRECT TO THE BEST OF MY

KNOWLEDGE.



*Clyde E. Purdy*  
 CLYDE E. PURDY S-4900

APPROVED

BY

THE HOLMES COUNTY ENGINEER  
 BY *[Signature]* G.W.S.

DATE 3-20-80

MAP OFFICE COPY

SCALE 1" = 100'

○ 2.P. SET

● 2.P. FOUND

RECORDED April 8<sup>th</sup>, 1980

AT 10:51 O'CLOCK a.m.

RECORDED April 8, 1980

HOLMES CO. Plat VOL. 8 PG. 589

FEE: \$ 2.00

*Richard Brown* RECORDED

→ ROBERT T. HINDEN