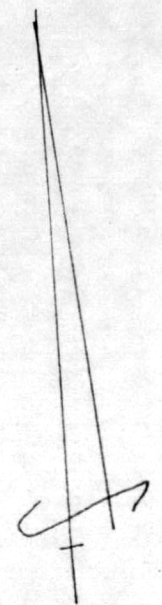
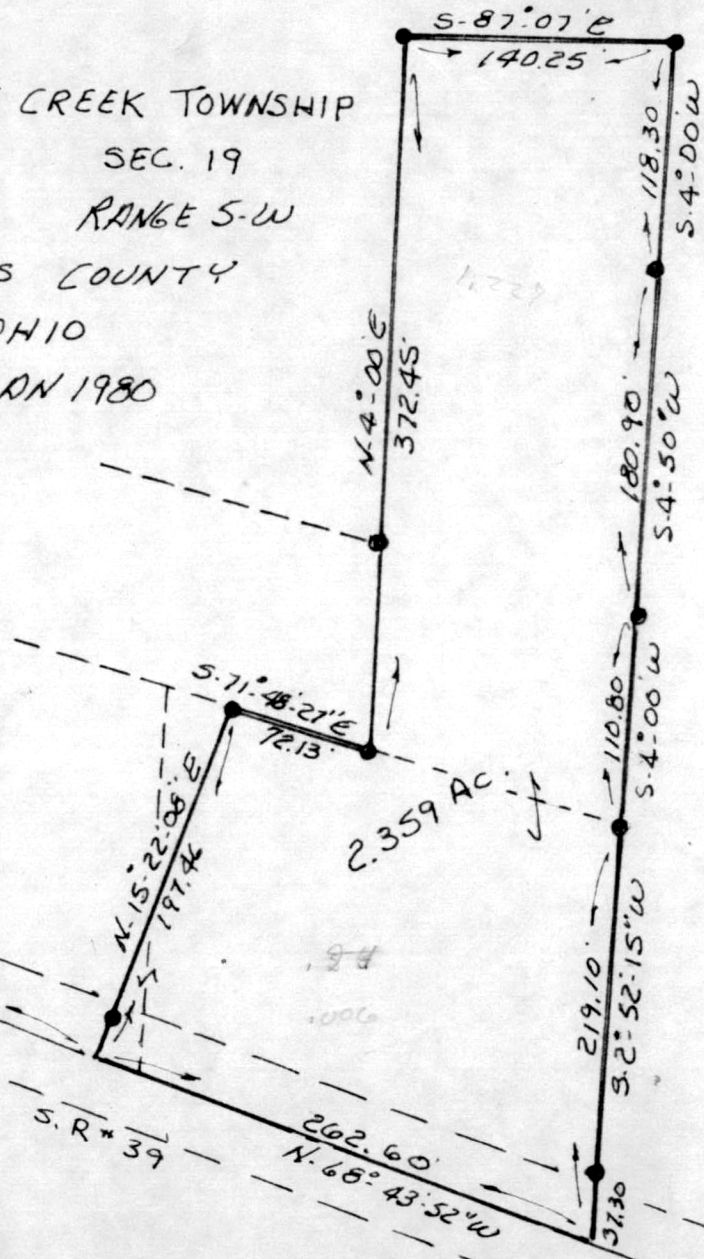


WALNUT CREEK TOWNSHIP  
 N.W. QTR. SEC. 19  
 TWP. 9-N RANGE 5-W  
 HOLMES COUNTY  
 OHIO  
 JAN 1980



SCALE 1" = 100'  
 ● IRON PIN

NOTE: THIS PLAT WAS COMPILED FROM PREVIOUS SURVEYS TO ACQUIRE ACREAGE & DESCRIPTION ONLY

I CERTIFY THIS PLAT TO BE CORRECT TO THE BEST OF MY KNOWLEDGE.

*Clyde Fordy*  
 CLYDE FORDY R.S. #4900

REC'D: March 5, 1980  
 AT 11:47 CLOCK A.M.  
 RECORDED: March 5, 1980  
 HOLMES CO. Plat VOL. 8 PG. 582  
 FEE \$ 2.60

*Richard Brown* RECORDER

MAP OFFICE COPY