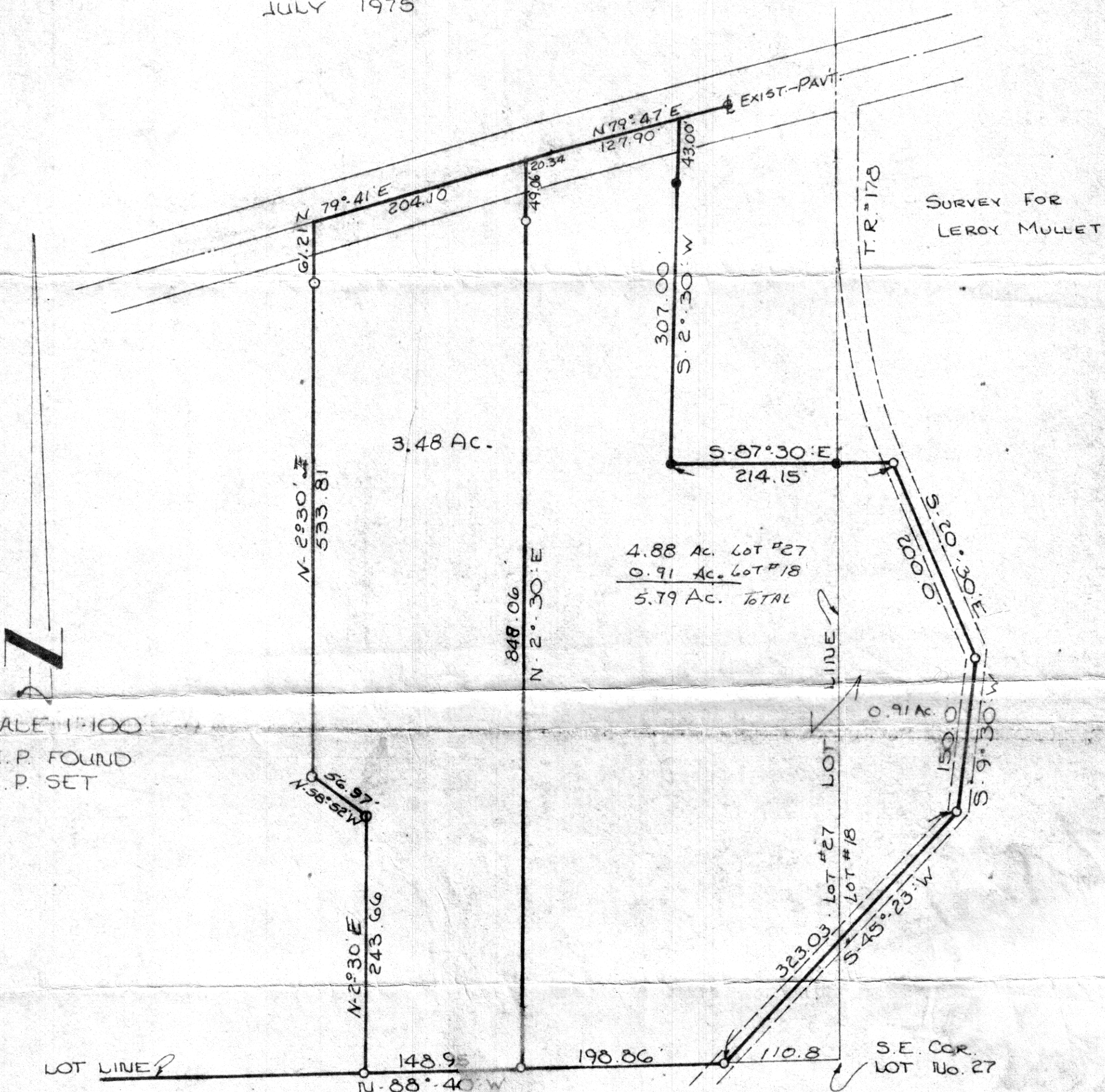


PAINT TOWNSHIP  
 LOT No. 27  
 TOWNSHIP - 10  
 HOLMES

4th. QTR. TWP.  
 RANGE - 5  
 COUNTY

VOL 8 PAGE 556

OHIO  
 JULY 1975



SCALE 1:100

- I.P. FOUND
- I.P. SET

120411

RECD. January 14<sup>th</sup> 1980  
 RE 4:17 O'CLOCK P.M.  
 RECORDED January 15, 1980  
 HOLMES CO. VOL. 8 PG. 556  
 FEB 3 30  
 Richard M. [Signature] RECORDER  
 15 x 11 x 2

I CERTIFY THIS SURVEY TO BE CORRECT TO THE BEST OF MY KNOWLEDGE.

Clyde E. Purdy  
 CLYDE E. PURDY R.S. #4900

Deed Vol. 208-  
 Pg. 456

MAP OFFICE COPY