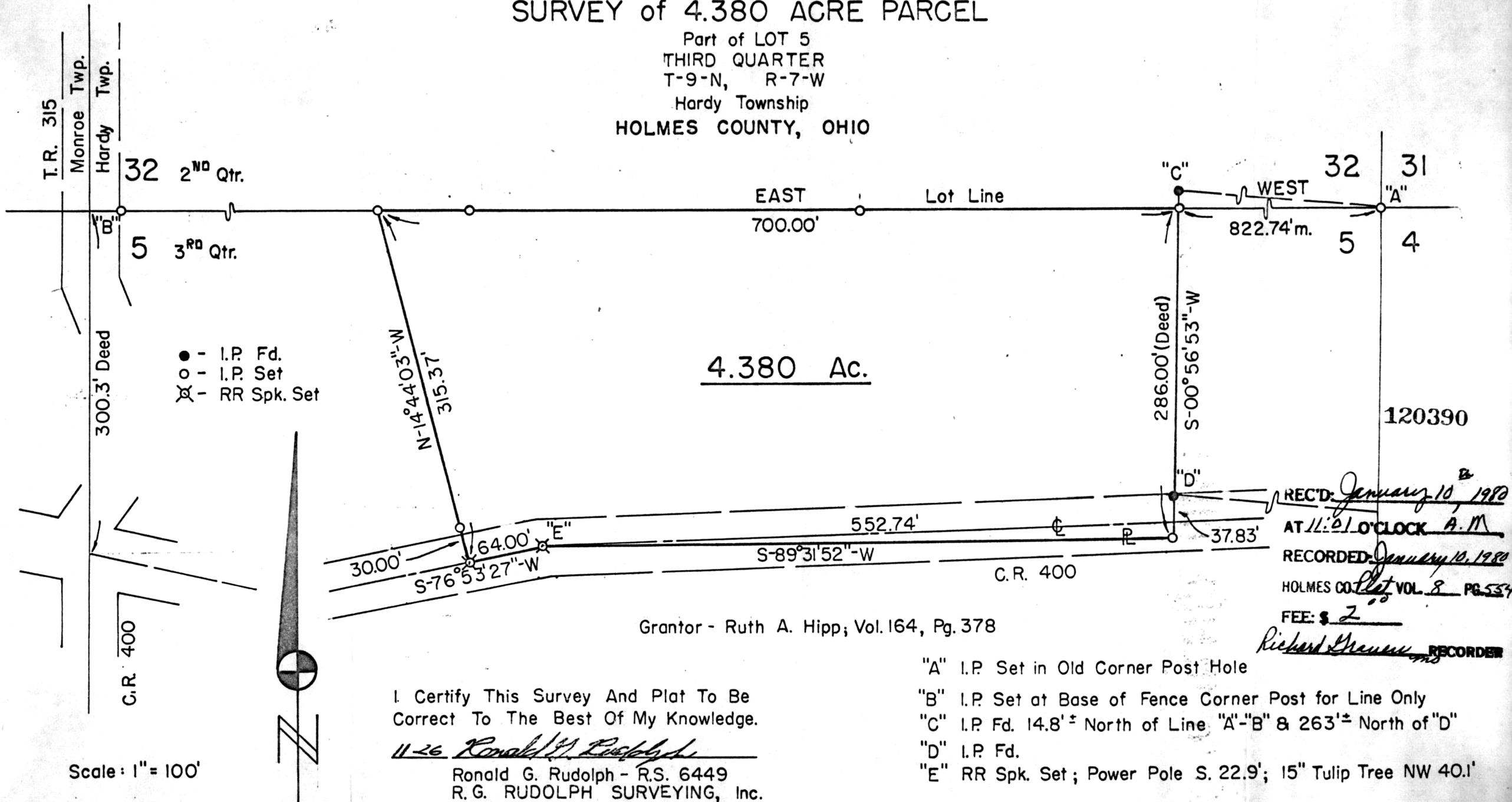


SURVEY of 4.380 ACRE PARCEL

Part of LOT 5
THIRD QUARTER
T-9-N, R-7-W
Hardy Township
HOLMES COUNTY, OHIO



4.380 Ac.

- - I.P. Fd.
- - I.P. Set
- ⊗ - RR Spk. Set



Scale: 1" = 100'

Grantor - Ruth A. Hipp; Vol. 164, Pg. 378

I Certify This Survey And Plat To Be Correct To The Best Of My Knowledge.

11-26 Ronald G. Rudolph
 Ronald G. Rudolph - R.S. 6449
 R.G. RUDOLPH SURVEYING, Inc.
 Wooster and Millersburg, Ohio

Deed Vol. 208 Page 438

- "A" I.P. Set in Old Corner Post Hole
- "B" I.P. Set at Base of Fence Corner Post for Line Only
- "C" I.P. Fd. 14.8' ± North of Line "A"- "B" & 263' ± North of "D"
- "D" I.P. Fd.
- "E" RR Spk. Set; Power Pole S. 22.9'; 15" Tulip Tree NW 40.1'

REC'D: *January 10, 1980*
 AT 11:01 O'CLOCK A.M.
 RECORDED: *January 10, 1980*
 HOLMES CO. Plat VOL. 8 PG. 534
 FEE: \$ 2

Richard Drennon RECORDER

MAP OFFICE COPY