

NW
120182

RECD. December 20th, 1979

AT 9:19 O'CLOCK A.M.

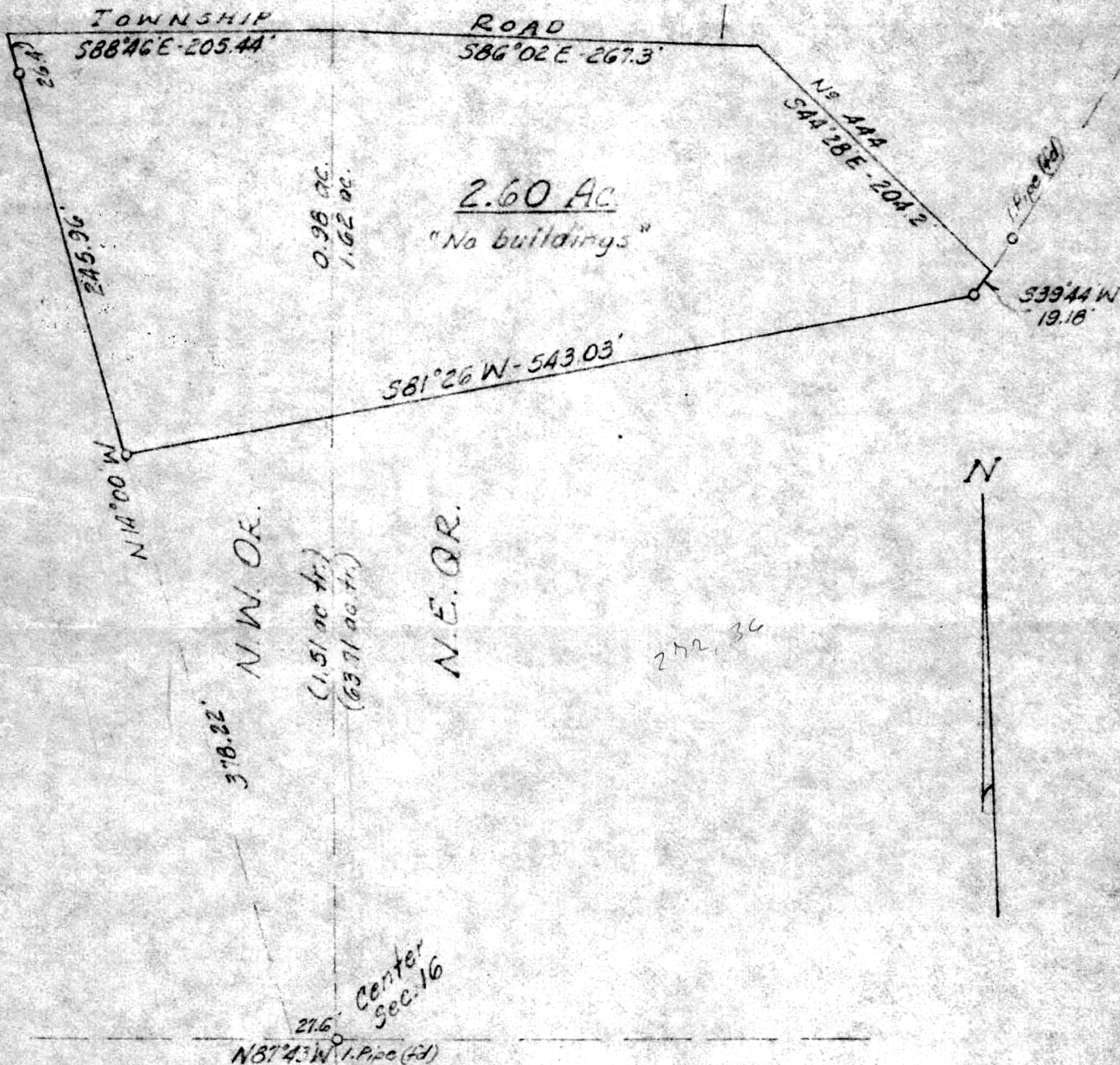
RECORDED, December 20, 1979

HOLMES CO. Plat VOL. 8 PG. 542

FEE: \$ 2.00

Richard W. Wynn RECORDED

Deed Vol. 208-Pg. 249^S KAUFMAN



APPROVED BY THE HOLMES COUNTY HEALTH DEPARTMENT BY [Signature] GWS.

DATE 12-13-79

MAP OFFICE COPY

PLAT OF SURVEY FOR

MARILYN KAUFMAN

LOCATED IN the Northeast & Northwest Quarter of Section 16, Township 9, Range 4, Walnutcreek Township, Holmes County

SCALE 1 in. = 100 ft

DATE 12/6/79

BAIR & GOODIE SURVEYING, Inc.

153 North Broadway • NEW PHILADELPHIA, OHIO
TELEPHONE (216) 339-2552

I, THE UNDERSIGNED, HEREBY CERTIFY THAT THIS PLAT IS TRUE AND CORRECT

Charles R. Goodie
REG. SURVEYOR NO 5521