

BY R.G.R. DATE 4-3-79
CHKD. BY RGR. DATE 4-3-79

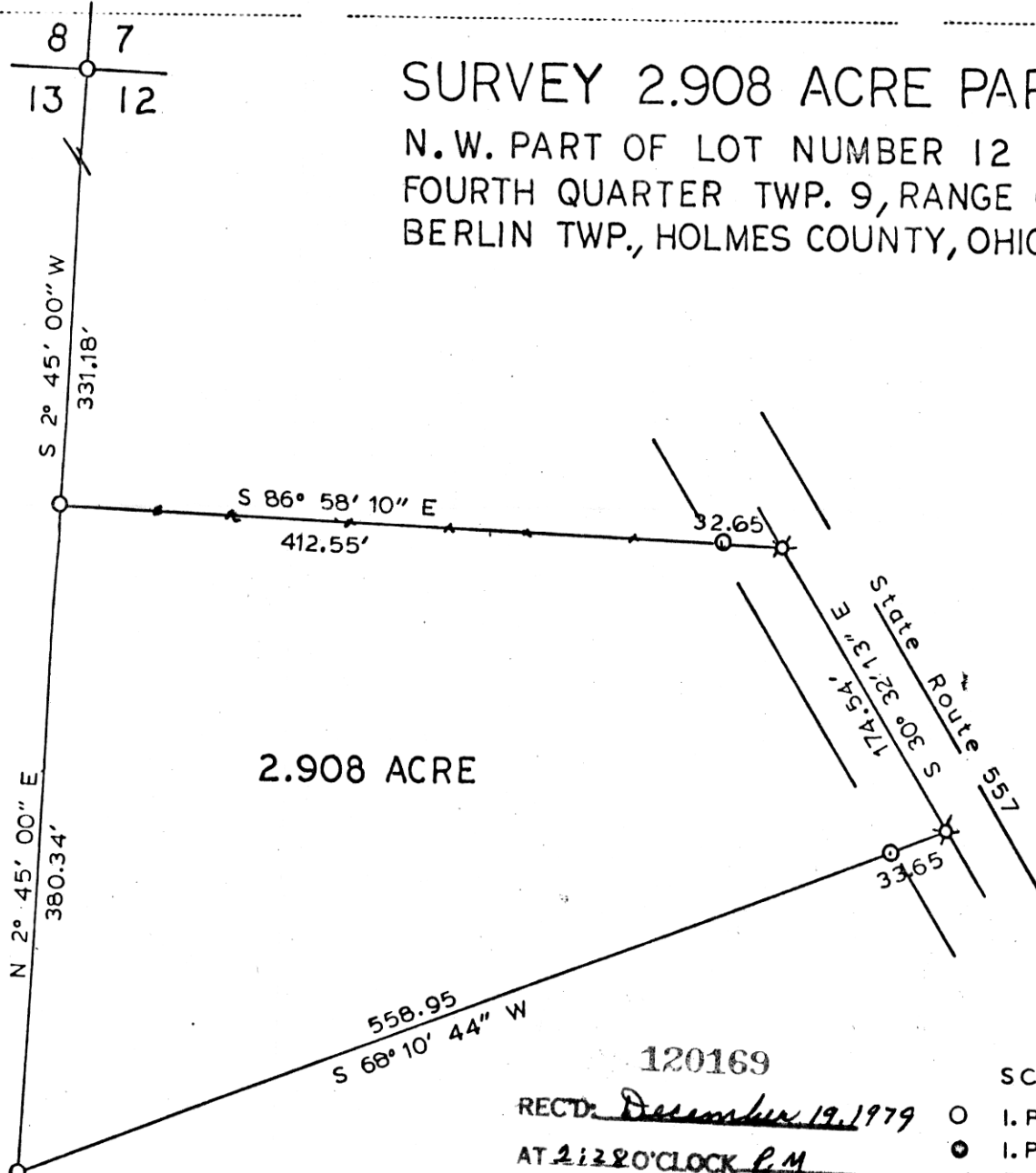
SUBJECT 2.908 ACRE

SHEET NO 1 OF 1
JOB NO.

pm

SURVEY 2.908 ACRE PARCEL

N.W. PART OF LOT NUMBER 12
FOURTH QUARTER TWP. 9, RANGE 6
BERLIN TWP., HOLMES COUNTY, OHIO



2.908 ACRE

120169

SCALE 1" = 100'

RECTD: December 19, 1979

- I. PIN SET
- I. PIN FOUND
- ⊗ R.R. SPIKE SET

AT 2:28:00 CLOCK P.M.

RECORDED: December 20, 1979

Deed Vol. 208 Pg. 231 HOLMES CO. Vol 8 PG. 540

FEE: \$ 2.00

Richard Thayer RECORDER

I Certify This Survey To Be Correct
To The Best Of My Knowledge.

APPROVED BY

THE HOLMES COUNTY HEALTH DEPARTMENT
BY [Signature] C.W.S.

DATE 12-10-79

Ronald G. Rudolph

RONALD G RUDOLPH, R.S. 6449
R G RUDOLPH SURVEYING, INC.
Wooster & Millersburg, Ohio

MAP OFFICE COPY