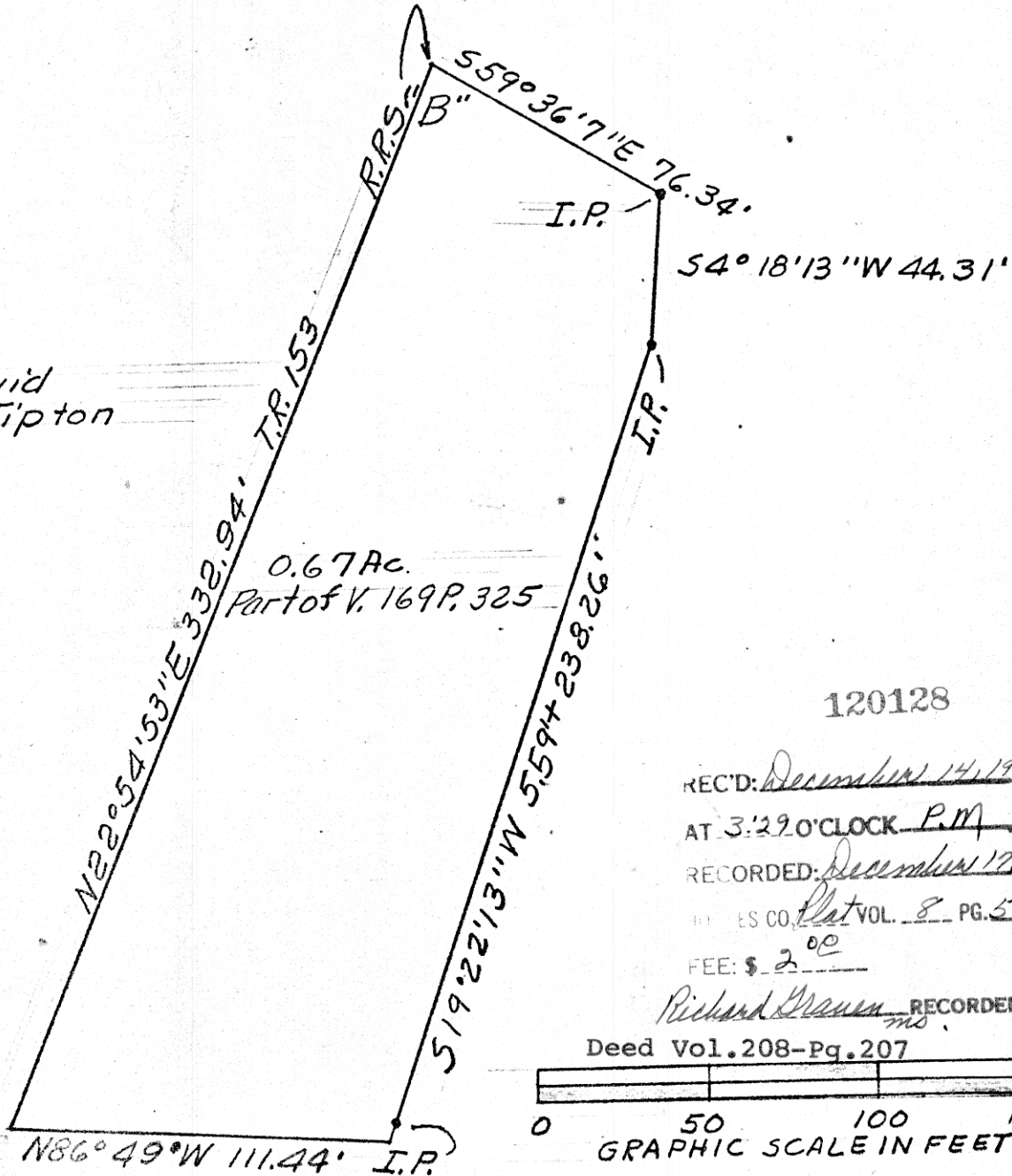


Point "B" is $S 86^{\circ} 17' E$ 1472.92', $S 22^{\circ} 15' W$ 211.5',
 $S 14^{\circ} 0' W$ 229.7', $S 22^{\circ} 24' 31'' W$ 71.83', $S 14^{\circ} 55'$
 $53'' W$ 283.20' and $S 15^{\circ} 44' 53'' W$ 313.46' from
 the NW cor'r NW $\frac{1}{4}$ S17, T9N, and R6W.



David
Tipton

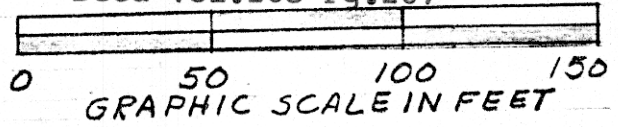
0.67 Ac.
Part of V. 169 P. 325

120128

REC'D: December 14, 1979
 AT 3:29 O'CLOCK P.M.
 RECORDED: December 17, 1979
 HOLMES CO. Plat VOL. 8 PG. 536
 FEE: \$ 2.00

Richard Draem RECORDER

Deed Vol. 208-Pg. 207



MAP OFFICE 607

APPROVED

BY

THE HOLMES COUNTY HEALTH DEPARTMENT

BY [Signature]

DATE 11-19-79

PLAT OF A SURVEY FOR
 WALLACE C. LOWE

Known as part of NW $\frac{1}{4}$ S17, T9N &
 R6 W of Hardy Twp., Hol. Co., Ohio.

Robert L. Kasner

Robert L. Kasner, P.S. 5193

11/18/74