

LOCATION MAP  
 WALNUT CREEK TOWNSHIP  
 N. W. QTR. SEC. 22  
 HOLMES COUNTY  
 OHIO

APPROVED BY  
 TAX MAP OFFICE

Date Sept. 20, 79 M.  
 119741

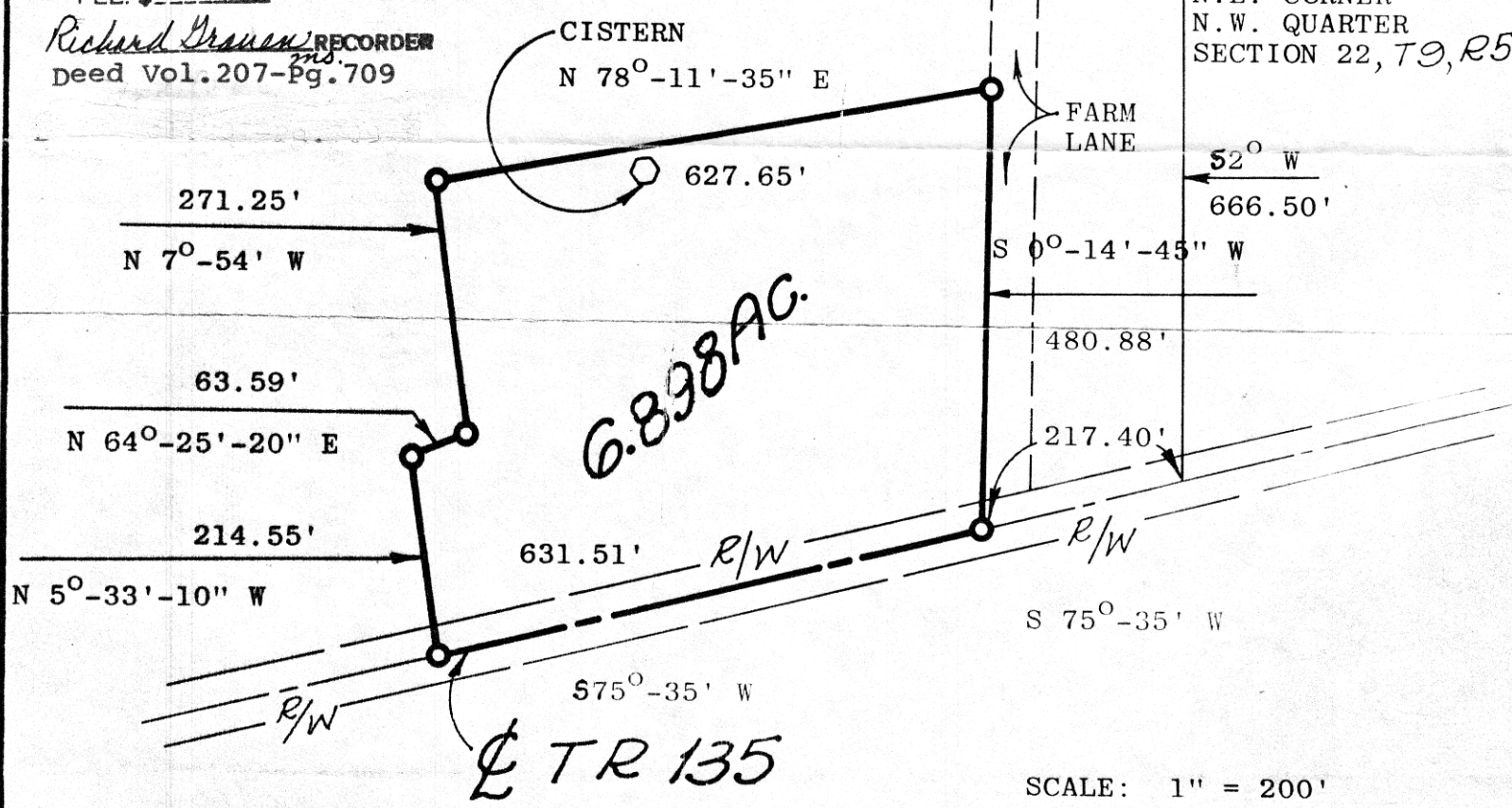


REC'D: November 9, 1979  
 AT 3:00 O'CLOCK P.M.  
 RECORDED: November 13, 1979  
 HOLMES CO. Plot VOL. 8 PG. 516  
 FEE: \$ 2<sup>00</sup>

*Richard Draven* RECORDER  
 Deed Vol. 207-Pg. 709

19 19  
 22 22

N.E. CORNER  
 N.W. QUARTER  
 SECTION 22, T9, R5



SCALE: 1" = 200'

- I. P. FOUND
- I. P. SET
- CISTERN
- SECTION 1/4 CORNER

DATE: SEPT. 5, 1978

ACRES IN ROADWAY = 0.44 ACRES  
 ACRES IN TRACT = 6.458 ACRES  
 TOTAL = 6.898 ACRES

I certify this survey to be correct  
 to the best of my knowledge. For:  
**HOLMES LAND SURVEYING CO.** (216) 893-2310

*Phillip E. Mathys*  
 Phillip E. Mathys, R.S. #5559

MAP OFFICE COPY