

N.W. CORNER
SW 1/4 56
T13N, R13W

Easterly on N. line SW 1/4
160. purchases (2640')
Vol. 114 Pg. 286

119375

RECT'D: October 4th 1979

AT 3:21 O'CLOCK P.M.

RECORDED: October 5, 1979

HOLMES CO. Plot VOL. 8 PG. 502

FEE: \$2.⁰⁰

Richard Bremer RECORDED

P. 201
P. 1118V

Points on 1973
survey P.B. 7 Pg. 126
Vol. 185 Pg. 79

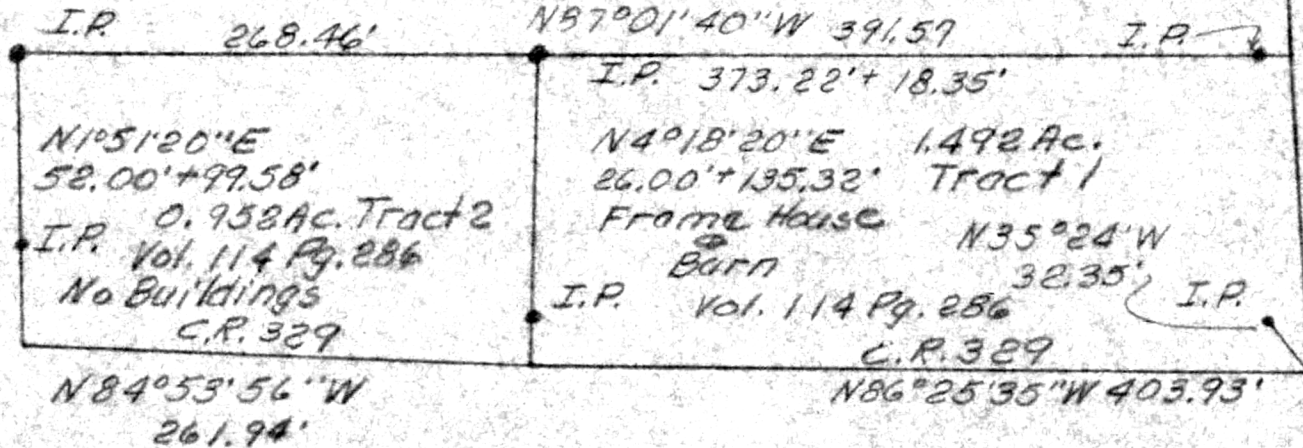
205.8'

340.16'

T.P. 331
512.01'
North

Scale: 1" = 100'

Lands of Andy M. Yoder
Vol. 114 Pg. 286 Tract 1



APPROVED BY
THE HOLMES COUNTY HEALTH DEPARTMENT
BY [Signature]

DATE 10-4-79
Sewage well permits required

PLAT OF A SURVEY FOR
ANDY M. YODER
(Grantor)
SW 1/4 56, T13N, R13W of
Prairie TWP, Holmes Co, Ohio
Robert L. Kasner, P.S. 5123

MAP OFFICE COPY

2/2/76