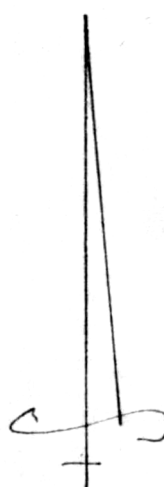
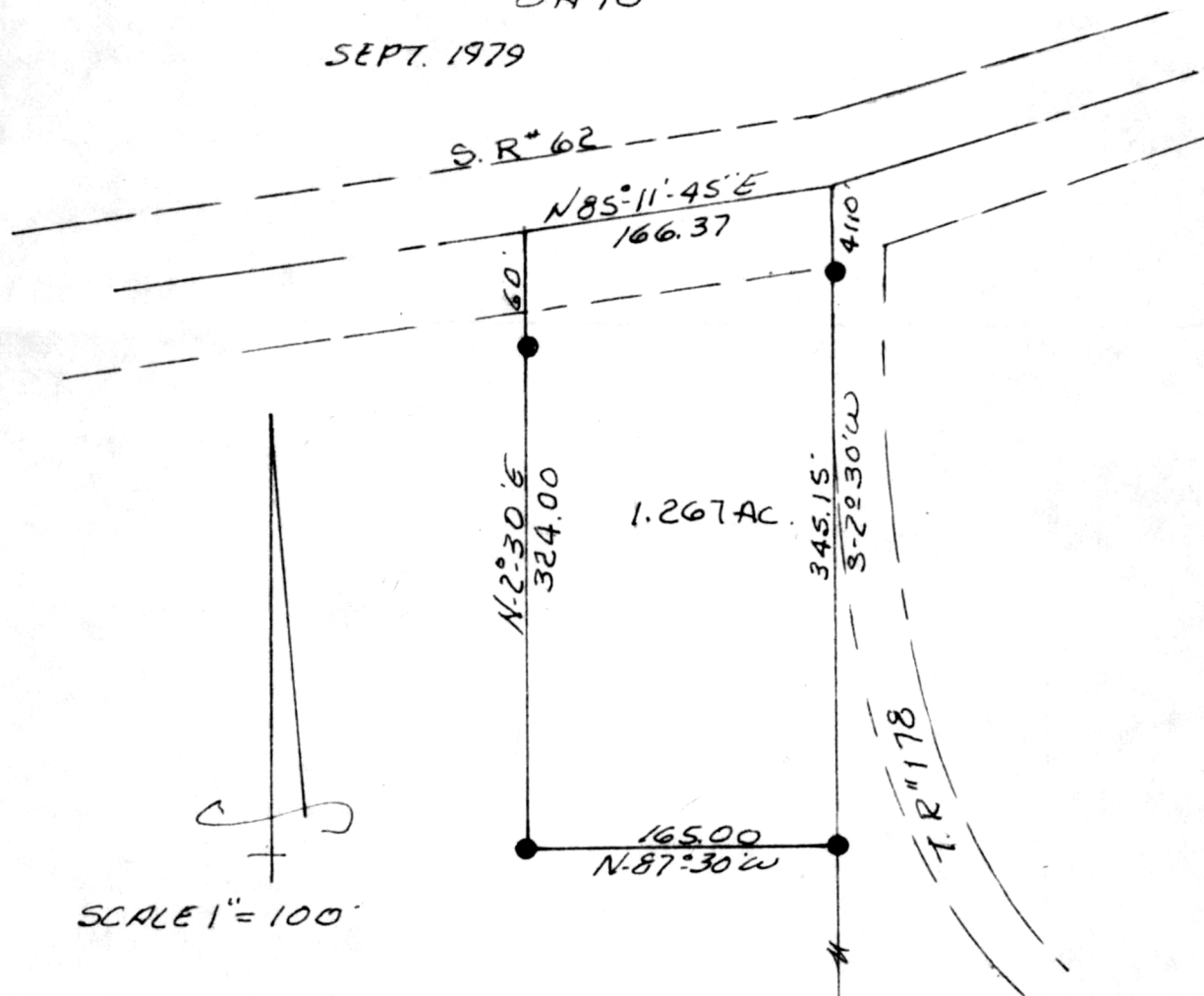


PAINT TOWNSHIP
 LOT NO. 27 4TH QTR TWP.
 TWP. 10 RANGE 5
 HOLMES COUNTY
 OHIO

SEPT. 1979

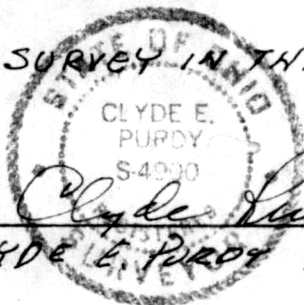


SCALE 1" = 100'

● EXISTING IRON PIN

THIS PLAT WAS PREPARED FROM
 PREVIOUS SURVEY IN THIS
 AREA.

S.E. COR.
 LOT # 27



Clyde Purdy
 CLYDE E. PURDY RS #4900

119352

REC'D: October 2, 1979
 AT 10:24 O'CLOCK A.M.
 RECORDED: October 2, 1979
 HOLMES CO. Plat VOL. 8 PG. 498
 FEE: \$ 2.00

Richard M. ... RECORDER
 Deed Vol. 207 = Pg. 446

MAP OFFICE COPY