

119188

REC'D: September 19, 1979

AT 9:18 O'CLOCK A.M.

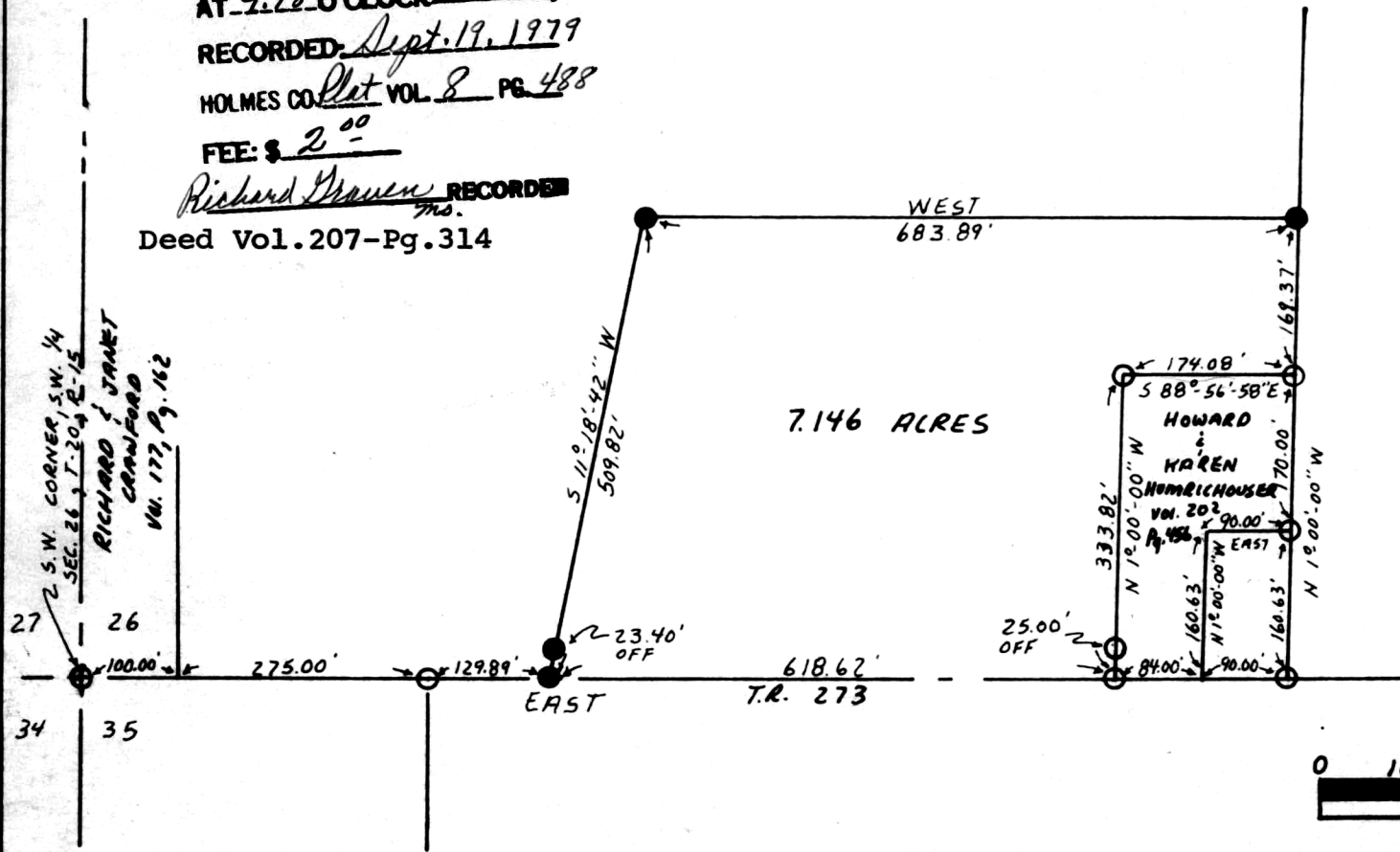
RECORDED: Sept. 19, 1979

HOLMES CO. Plat VOL 8 PG 488

FEE: \$ 2<sup>00</sup>

Richard Draven RECORDED  
M.S.

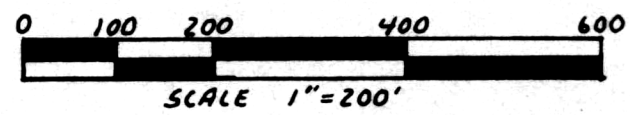
Deed Vol. 207-Pg. 314



SYMBOLS

- ⇒ Iron Pin Found
- ⇒ Iron Pin Set

NOTE: All bearings shown are for the determination of angles only.



I hereby certify this plat to be a true delineation of a field survey by Hudnut - Laughery & Assoc. in August, 1979.

Ronald L. Laughery 8/25/79  
Ronald L. Laughery P.S., P.E.  
Registered Surveyor No. 6111

**MAP OFFICE COPY**

HUDNUT - LAUGHERY & ASSOCIATES  
 Engineering & Surveying  
 1283 Center Lane Drive  
 Ashland, Ohio 44805  
 T-20, R-15  
 S.W. 1/4, SEC. 26, WASHINGTON TWP.  
 Holmes County, Ohio  
 R.L.L. 8/25/79 1"=200'