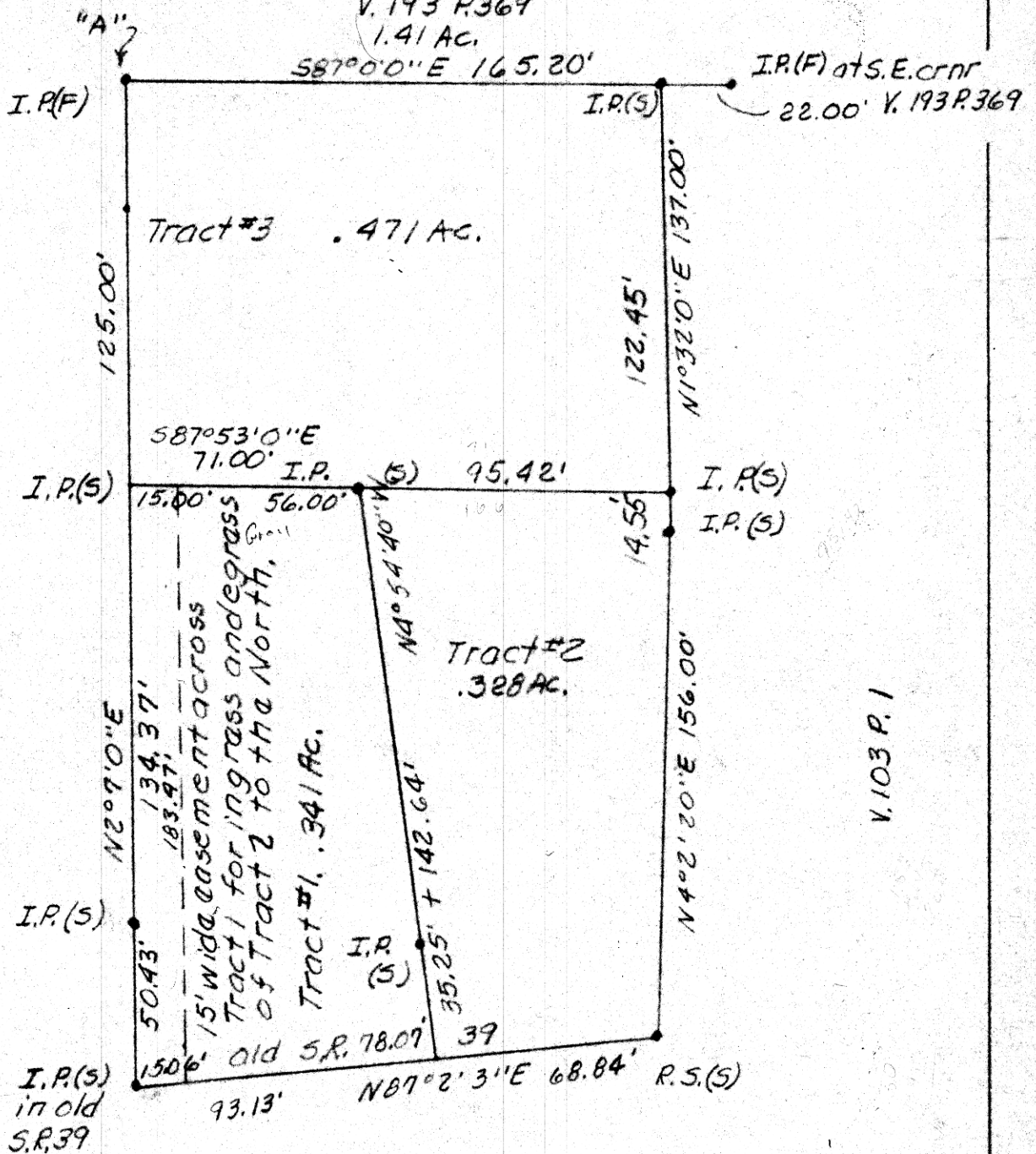


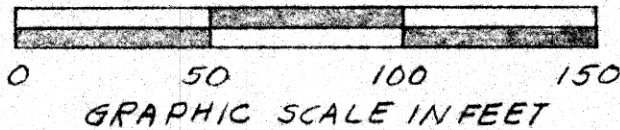
Point "A" is referred in V. 173 P. 557 as being E 2072.4', S 15°W 544.5', N 88°15'W 999.24', S 1°30'W 375.54', and S 86°30'W 120.2' from the N.W. corner S.W. 1/4 S 11, T 9N, R 7W of Hardy Twp., Hol. Co., Ohio.

V. 193 P. 369
1.41 Ac.



V. 190 P. 485

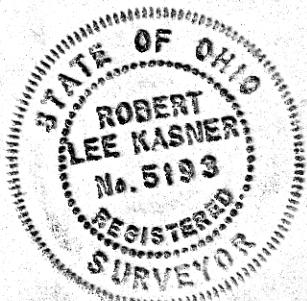
V. 103 P. 1



PLAT OF THE SUBDIVISION
OF V. 173 P. 557
KNOWN as part of the S.W. 1/4
S 11, T 9N, R 7W, of Hardy Twp.,
Hol. Co., Ohio.

Robert L. Kasner P.S. 5193
P.E. 28820.

118233



RECT: June 28, 1979

AT 10:30 O'CLOCK A.M.

RECORDED: June 28, 1979

HO: S. CO. Plot VOL 8 PG 445

FEE: \$ 2.00

Richard Hauen RECORDER

Deed Vol. 206-Pgs. 327 & 330

5/22/79

MAP OFFICE COPY

J.M.