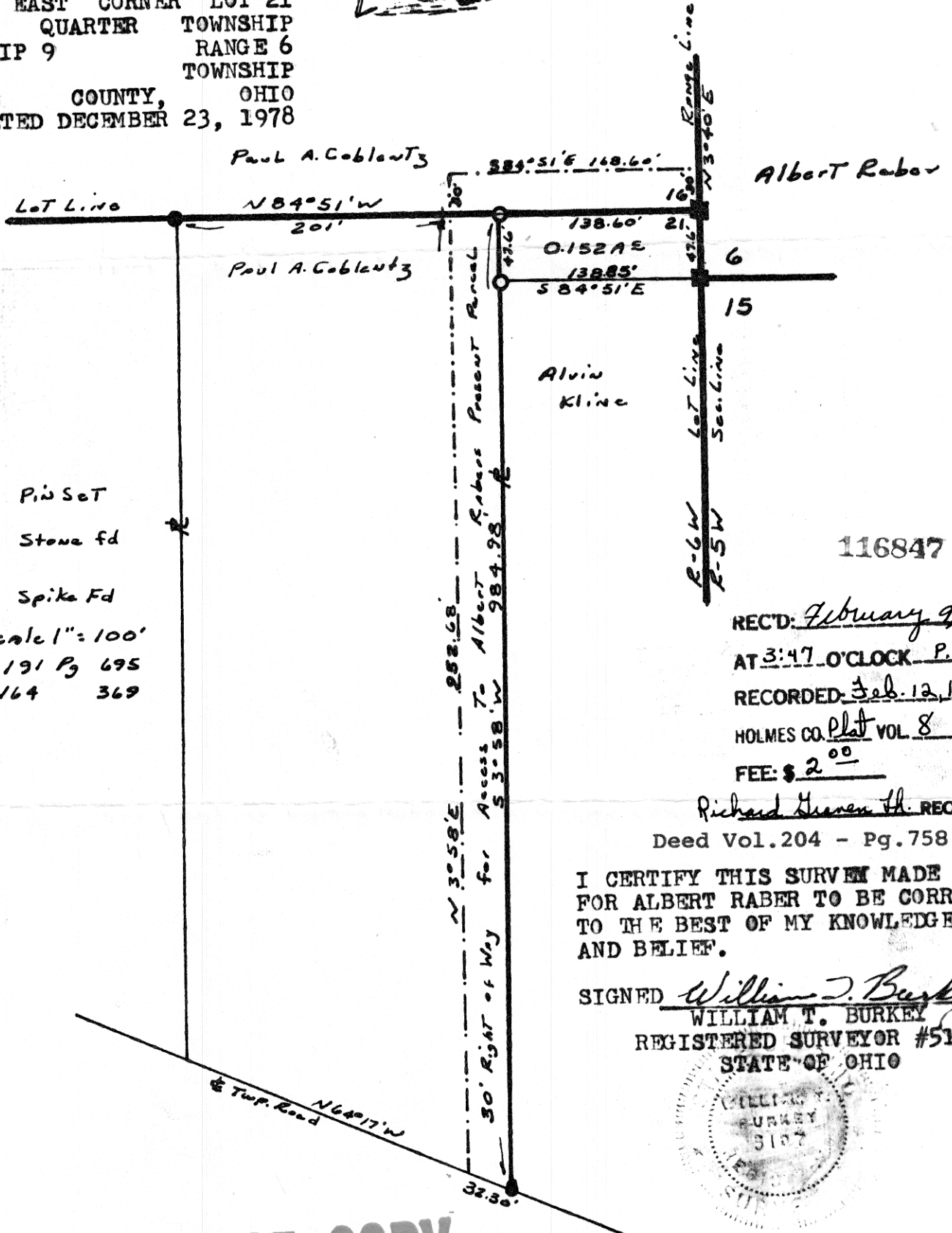


WM. TERRY BURKEY SURVEYING



RABER-COBLENTZ-KLINE SURVEY
 SOUTH EAST CORNER LOT 16
 NORTH EAST CORNER LOT 21
 FIRST QUARTER TOWNSHIP
 TOWNSHIP 9 RANGE 6
 BERLIN TOWNSHIP
 HOLMES COUNTY, OHIO
 COMPLETED DECEMBER 23, 1978



- Pin Set
 - Stone fd
 - Spike Fd
- Scale 1" = 100'
 V-191 Pg 695
 164 369

116847

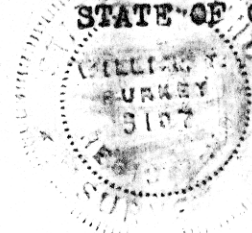
REC'D: February 9, 1979
 AT 3:47 O'CLOCK P.M.
 RECORDED: Feb. 12, 1979
 HOLMES CO. Plat VOL 8 PG 377
 FEE: \$ 2⁰⁰

Richard Hansen Jr. RECORDER

Deed Vol. 204 - Pg. 758

I CERTIFY THIS SURVEY MADE
 FOR ALBERT RABER TO BE CORRECT
 TO THE BEST OF MY KNOWLEDGE
 AND BELIEF.

SIGNED William T. Burkey
 WILLIAM T. BURKEY
 REGISTERED SURVEYOR #5107
 STATE OF OHIO



MAP OFFICE COPY