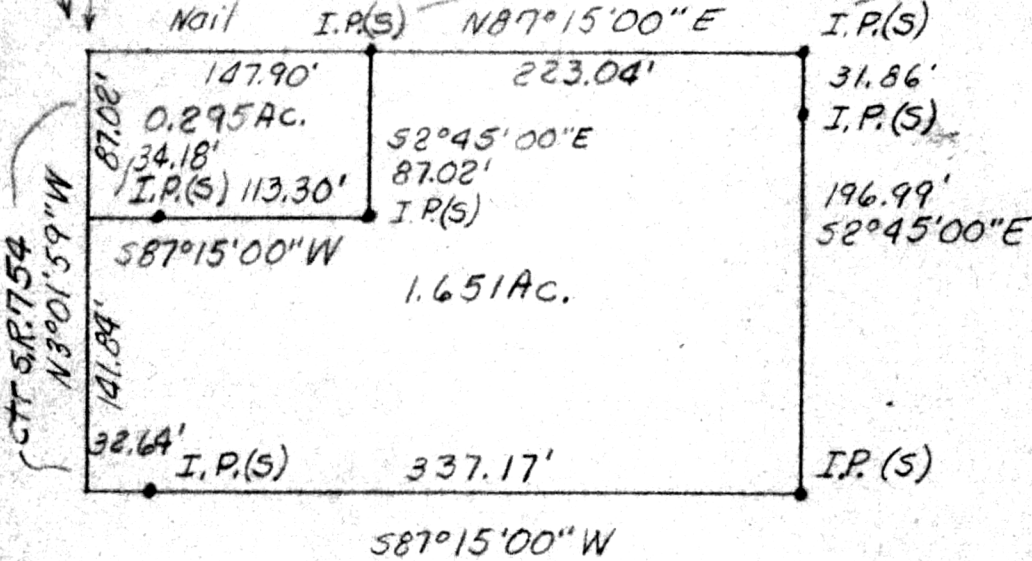


Ctr S.R. 754 & T.R. 317

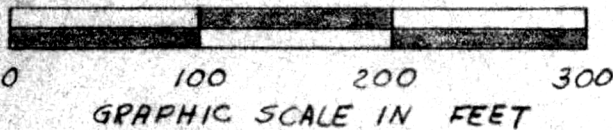
N.W. cor. S.W. 1/4 N.E. 1/4
S14, T17N, R14W,
Ripley Twp., Hol. Co., O.

N. side part T.R. 317



Both tracts are part of Vol. 172 Pg. 149 Tract 4.
1.651 acre tract goes to Jeff McMillan from Robert E. & Maria E. Acker. 0.295 acre tract is a tract supposedly deeded from Acker to Hopewell Church for parking purposes. When this survey was made Robert Acker and the church custodian were there and pointed out about where it had been a grade upon. This was done as no one knows where said deed is as they related that it had never been recorded. To the best available knowledge to the author this is it and the 1st time it has ever been staked out.

116764



REC'D: January 31, 1979

AT 2:10 O'CLOCK P.M.

RECORDED: January 31, 1979

HOLMES CO. Plat VOL. 8 PG. 372

FFEE: \$ 2.00

Richard Deery RECORDER

Deed Vol. 204 - Page 685



PLAT OF A SURVEY FOR
JEFF McMILLEN
Grantee

Known as part of S.W. 1/4 N.E. 1/4
S14, T17N, R14W of Ripley
Twp., Hol. Co., Ohio
Robert L. Kasner P.S. 5193
P.E. 28820

MAP OFFICE COPY