

Known as part of the S.W.  
 1/4 of Fract 1 S 25, T 9 N, R 6 W  
 of Hardy Twp., Hol. Co., Ohio  
 and more fully described  
 as follows.

Beginning at an iron pin,  
 found at N.W. corner S.W. 1/4 of  
 S.E. 1/4 of S 25; thence S 0°  
 56' 39" W 365.51' with the  
 E. line S.W. 1/4 to an iron pin  
 at the true part of begin-  
 ning of the herein described  
 parcel;

thence S 0° 56' 39" W 674.33'  
 to a point in T.R. 81;

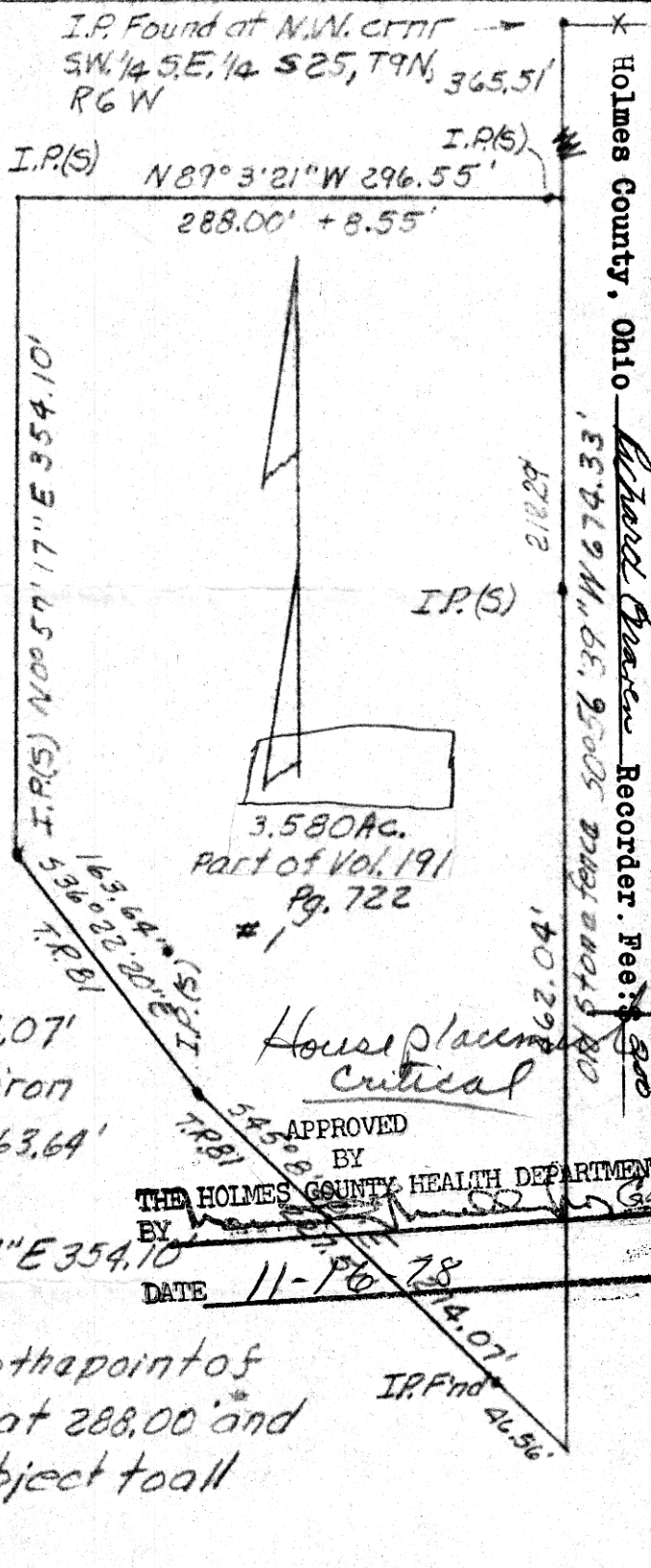
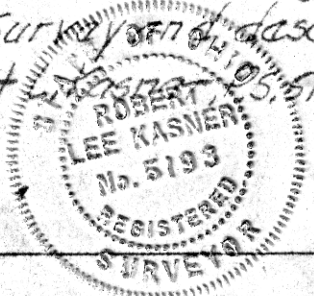
thence with T.R. 81 the fol-  
 lowing 2 courses and leaving  
 E. line S.W. 1/4 N 45° 8' 20" W 274.07'  
 to an iron pin and passing an iron  
 pin at 46.56', and N 36° 22' 20" W 163.64'  
 to an iron pin;

thence leaving T.R. 81 N 0° 57' 17" E 354.10'  
 to an iron pin;

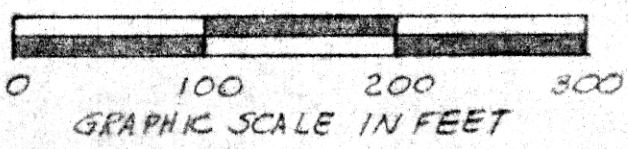
thence S 89° 3' 21" E 296.55' to the point of  
 beginning and passing an iron pin at 288.00' and  
 containing 3.580 acres, but subject to all  
 legal highways.

Part of Vol. 191 Pg. 722.

Survey and description by  
 Robert Lee Kasner, No. 5193.



APPROVED  
 BY  
 THE HOLMES COUNTY HEALTH DEPARTMENT  
 DATE 11-16-78



Known as part of S.W. 1/4 Fract 1  
 S 25, T 9 N, R 6 W of Hardy  
 Twp., Hol. Co., Ohio.

MAP OFFICE COPY

8/22/78

Rec'd. for record November 20<sup>th</sup> 1978 at 1:40 o'clock P.M.  
 Recorded Vol. 21 1978 in Plat Vol. 8 Pg. 343  
 Holmes County, Ohio  
 Richard P. Mason Recorder. Fee: \$900  
 116162  
 Deed Vol. 204 - 73