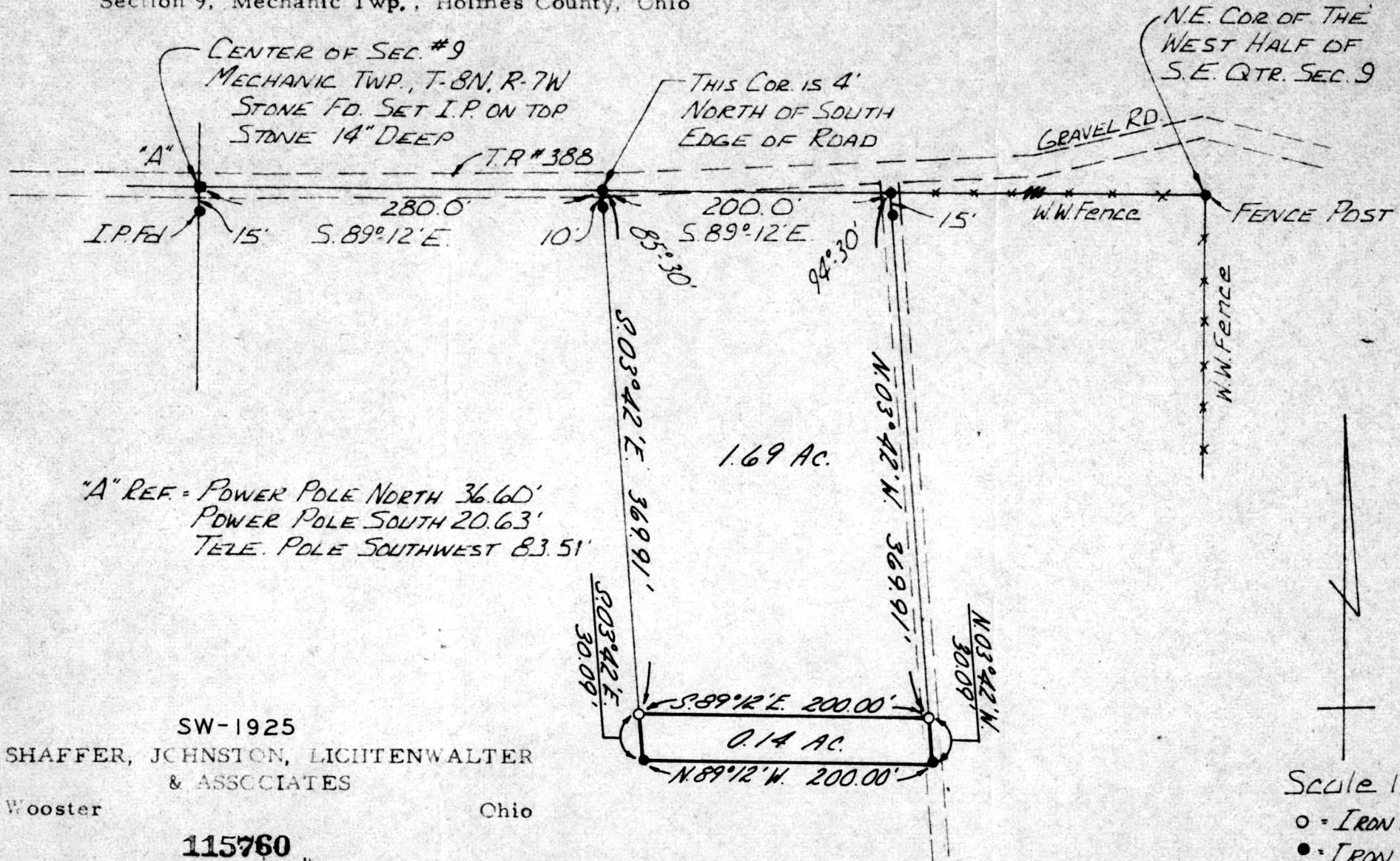


Section 9, Mechanic Twp., Holmes County, Ohio



"A" REF. = POWER POLE NORTH 36.60'
 POWER POLE SOUTH 20.63'
 TELE. POLE SOUTHWEST 83.51'

SW-1925
 SHAFFER, JOHNSTON, LICHTENWALTER
 & ASSOCIATES
 Wooster Ohio

115760

REC'D: Oct. 10, 1978
 AT 2:46 O'CLOCK P.M.
 RECORDED: Oct. 11, 1978
 HOLMES CO. Plat VOL. 8 PG. 318
 FEE: \$2.00

I certify this plat to be a correct return of field notes of a survey in the southeast Quarter, Section 9, T-8N, R-7W, Mechanic Township, Holmes County, Ohio for Elmer McCoy, made SEPT., 1978

Richard James Sh. RECORDER

Richard J. McQuaid, P. S. 5009

Scale 1"=100'
 ○ = IRON PIN SET
 ● = IRON PIN FOUND
 ■ = Stone Found

MAP OFFICE COPY

Waltman