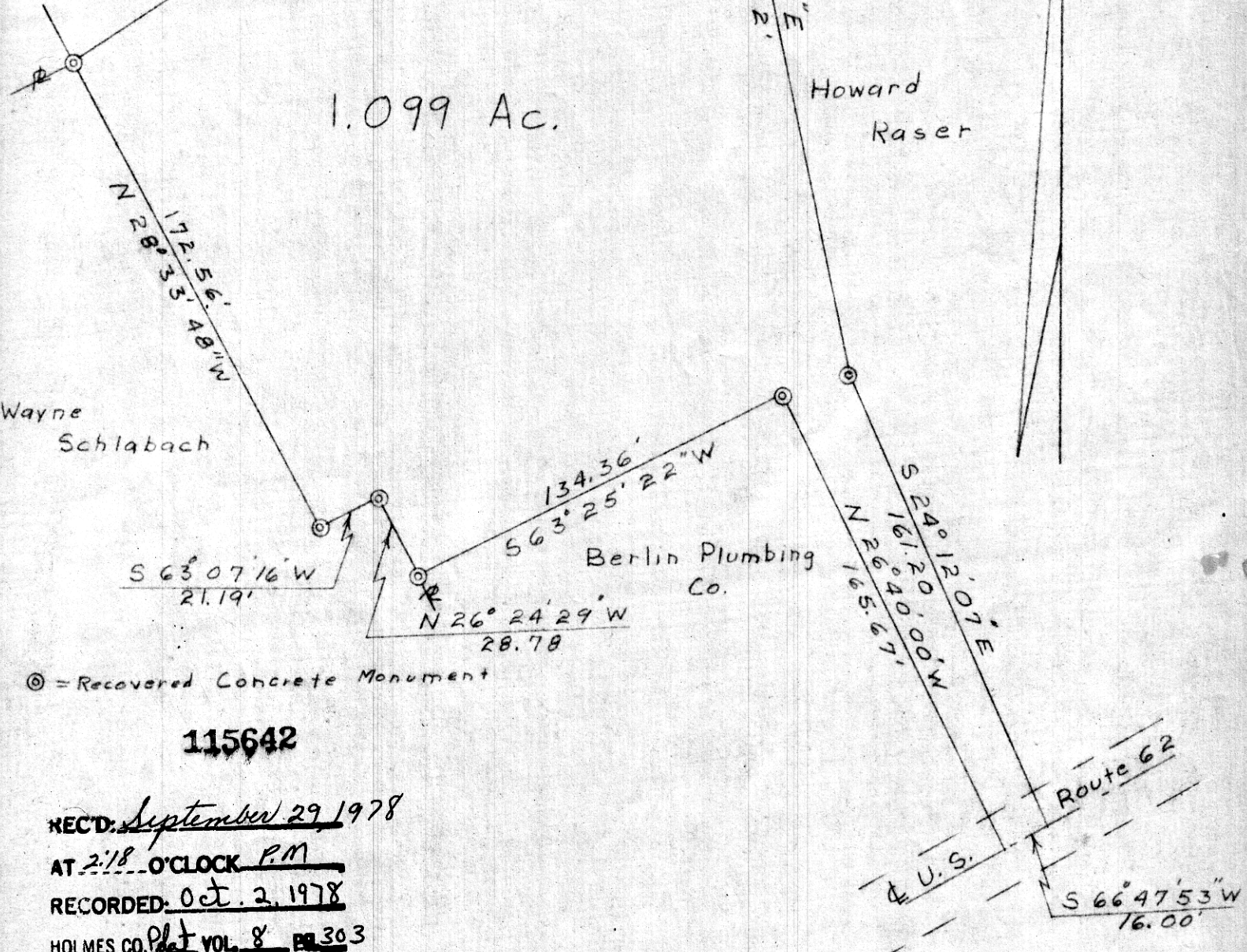
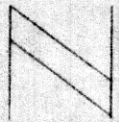


SECOND STUTZMAN SUBDIVISION
 VOL. 6/174 & 175
 LOT 16
 N 57° 08' 11" E
 247.36'

1.099 Ac.



⊙ = Recovered Concrete Monument

115642

RECD: September 29 1978

AT 2:18 O'CLOCK P.M.

RECORDED: Oct. 2, 1978

HOLMES CO. Plat Vol. 8 pg 303

FEE: \$ 2.00

Richard Haven Jr. RECORDS

Plat of a tract of land for Paul Stutzman
 in
 Lot 21
 First Quarter
 Range 6W, Township 9N
 Berlin Township
 Holmes County
 Ohio

Scale: 1"=50' August 18, 1978

G W Stewart

Registered Surveyor #6357

MAP OFFICE COPY

