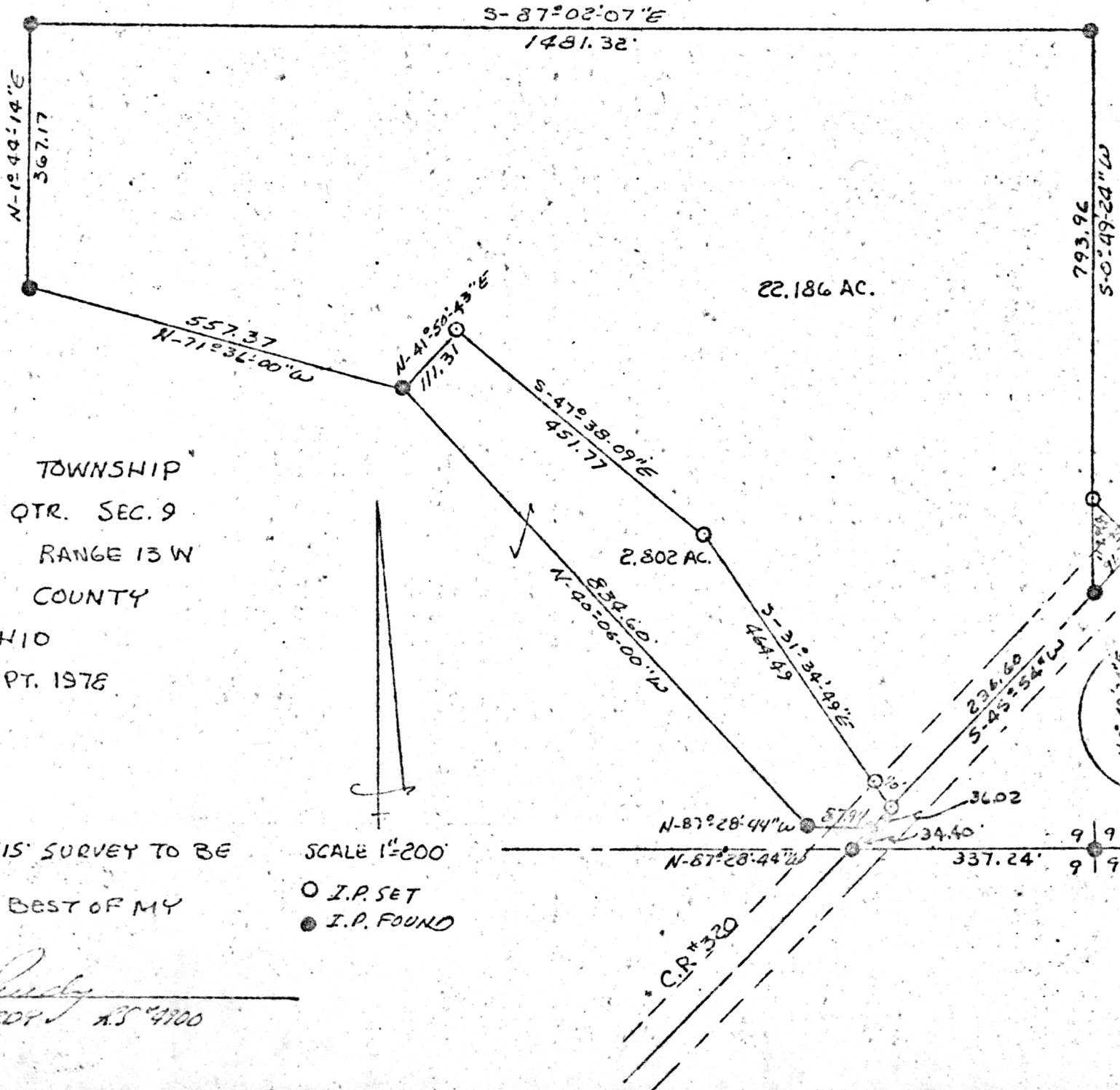


PRAIRIE TOWNSHIP
 N.W. & NE. QTR. SEC. 9
 TWP. 13N RANGE 13 W
 HOLMES COUNTY
 OHIO
 SEPT. 1978



I CERTIFY THIS SURVEY TO BE
 CORRECT TO THE BEST OF MY
 KNOWLEDGE.

Clyde E. Ruddy
 CLYDE E. RUDDY AS 4100

SCALE 1"=200'
 ○ I.P. SET
 ● I.P. FOUND

REC'D: Sept. 28, 1978
 AT 3:30 O'CLOCK P.M.
 RECORDED: Sept. 29, 1978
 HOLMES CO. Plat VOL. 8 PG. 300
 FEE: \$2.00
 Richard Hengen, Recorder
 Levi A. Miller

Deed Vol. 203 - Pg. 451

MAP OFFICE COPY

115633