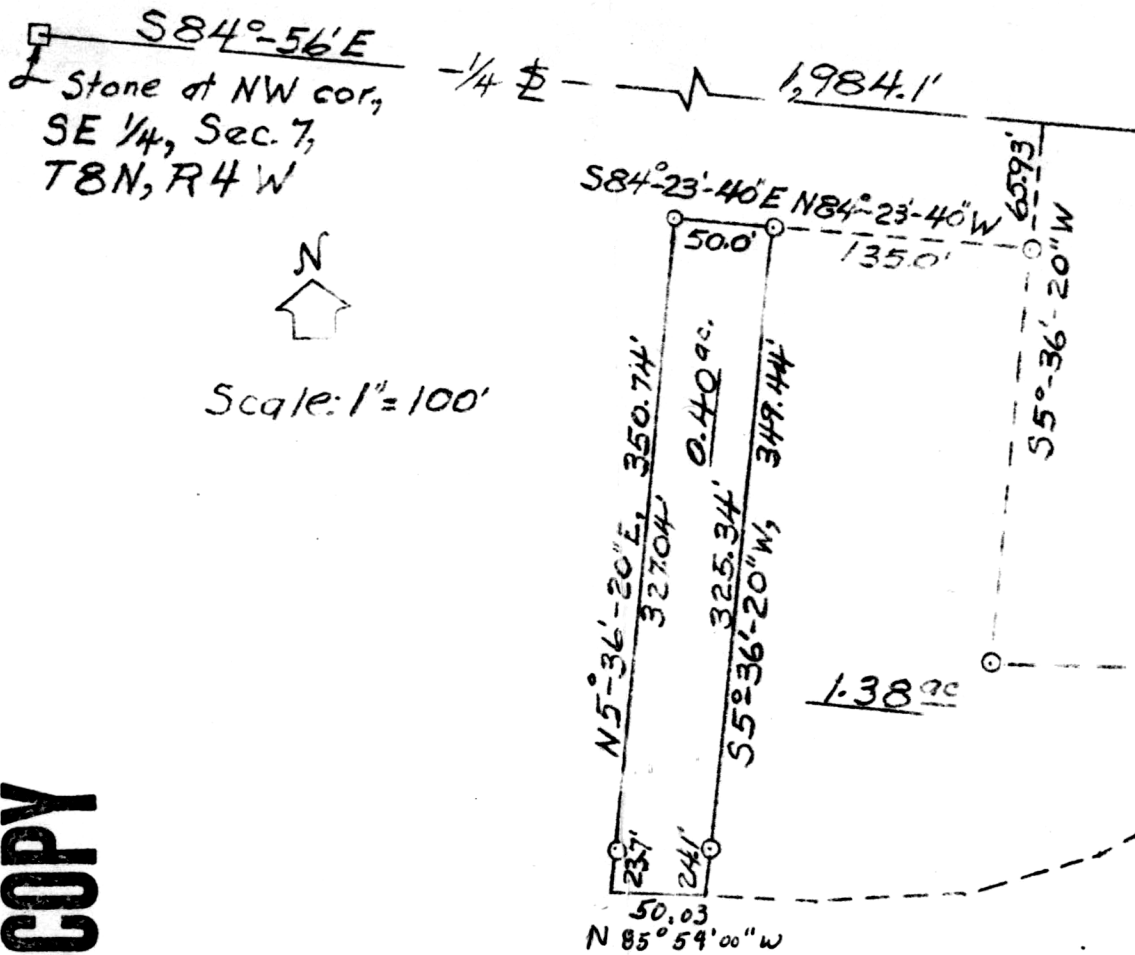


MAP OFFICE COPY



N  
 Scale: 1" = 100'

This plat prepared by  
 Clarence L. Muntz  
 Reg. Sur. #3427  
 Aug. 1, 1978  
 Survey: July 31, 1978



115591

REC'D: September 22, 1978  
 AT 9:40 O'CLOCK P.M.  
 RECORDED: Sept. 25, 1978  
 HOLMES CO. Plat VOL. 8 PG. 295  
 FEE: \$ 2.00

Richard H. Henny RECORDER

Deed Vol. 203, Page 409

PLAT OF A 0.40 ACRE  
 TRACT OF LAND  
 LOCATED IN  
 CLARK TOWNSHIP  
 HOLMES COUNTY  
 OHIO  
 Part of  
 SE 1/4, SEC 7, T8N, R4W

*Henny*