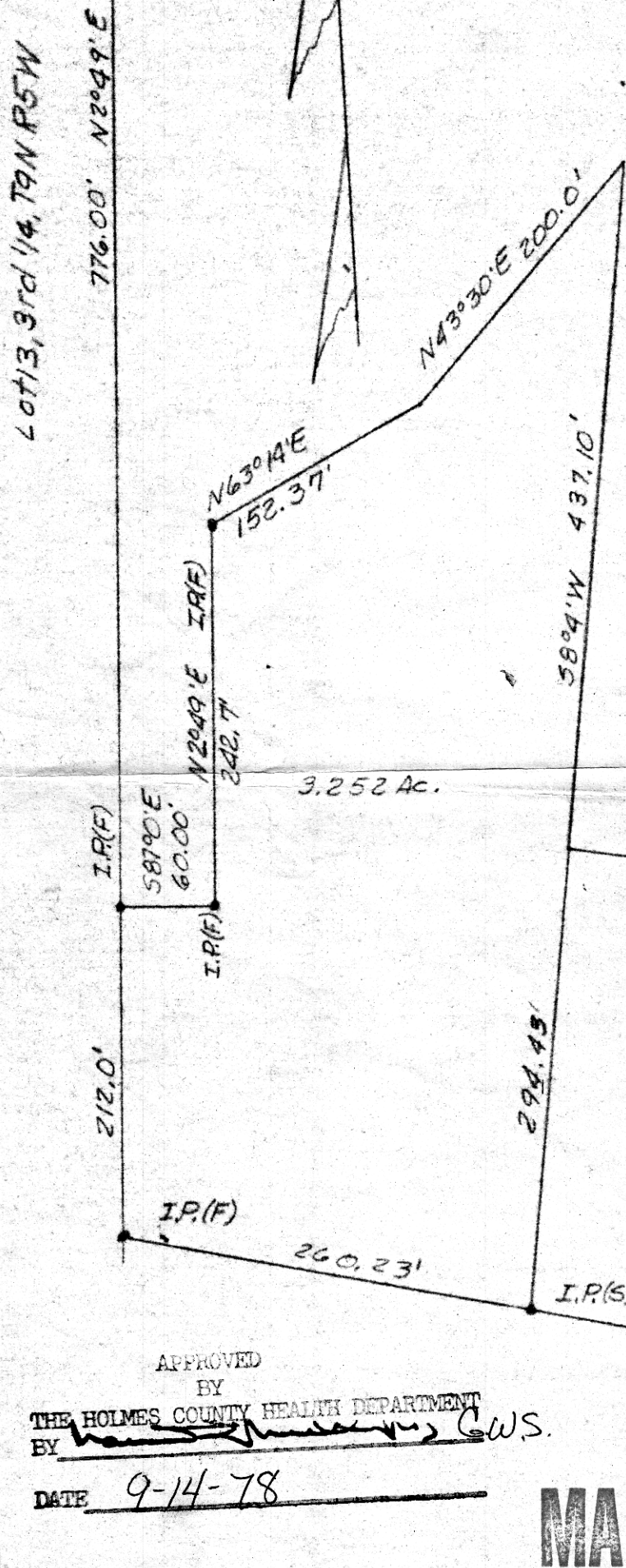


Lot 5

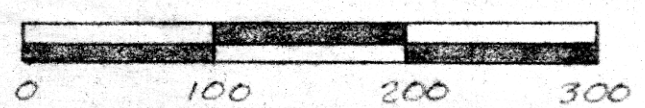
stone at N.W. corner
Lot 4, 3rd 1/4, T9N
R5W



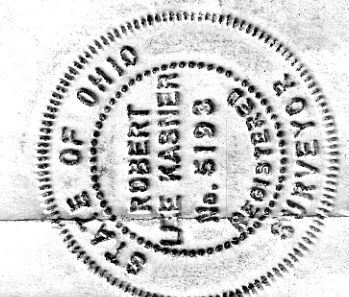
Known as part of Lot 4, 3rd 1/4, T9N, R5W of Walnut
creek TWP, Hol. Co., Ohio, and more fully described as follows:
Beginning at a stone at N.W. corner Lot 4; thence S
2049'W 776.0' to an iron pin (F) at the true point of be-
ginning of the herein described parcel;
thence leaving the lot line S870'E 60.00' to an
iron pin (F);
thence N2049'E 242.7' to an iron pin (F);
thence N63014'E 152.37' to a point in a small
creek;
thence N43030'E 200.00' to a point;
thence S804'W 731.53' to an iron pin (S);
thence N76044'W 260.23' to an iron pin (F) on
W. line Lot 4;
thence N2049'E 212.0' to the point of beginning
and containing 3.252 acres.
Part of Vol. 196 Pg. 776, P.B. 7 Pg. 754.
Survey and description by Robert L. Kasner
P.S. 5193, P.E. 28820.

115529

REC'D: Sept. 15, 1978
AT 2:37 O'CLOCK P.M.
RECORDED: Sept. 18, 1978
HOLMES CO. Plat VOL. 8 P.B. 2
FEE: \$ 3.38
Richard Hansen, Jr. RECORDER
13 X 13 X 2
Deed Vol. 203
Pg. 342 J.H.



GRAPHIC SCALE IN FEET
PLAT OF A SURVEY FOR
WELDON GERBER
KNOWN AS PART OF LOT 4, 3rd
1/4, T9N, R5W, WOL. TWP.
Hol. Co., Ohio
5800'E 771.54'



8.85 Ac.
- 3.252
5.598 Ac. remaining.
Vol. 196 Pg. 776

APPROVED
BY
THE HOLMES COUNTY HEALTH DEPARTMENT
BY [Signature] GWS.
DATE 9-14-78

MAP OFFICE COPY