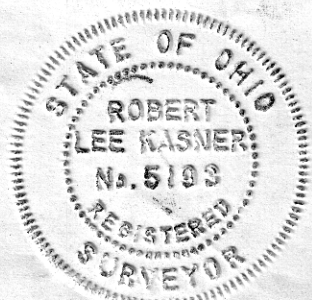
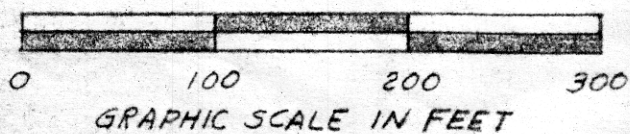
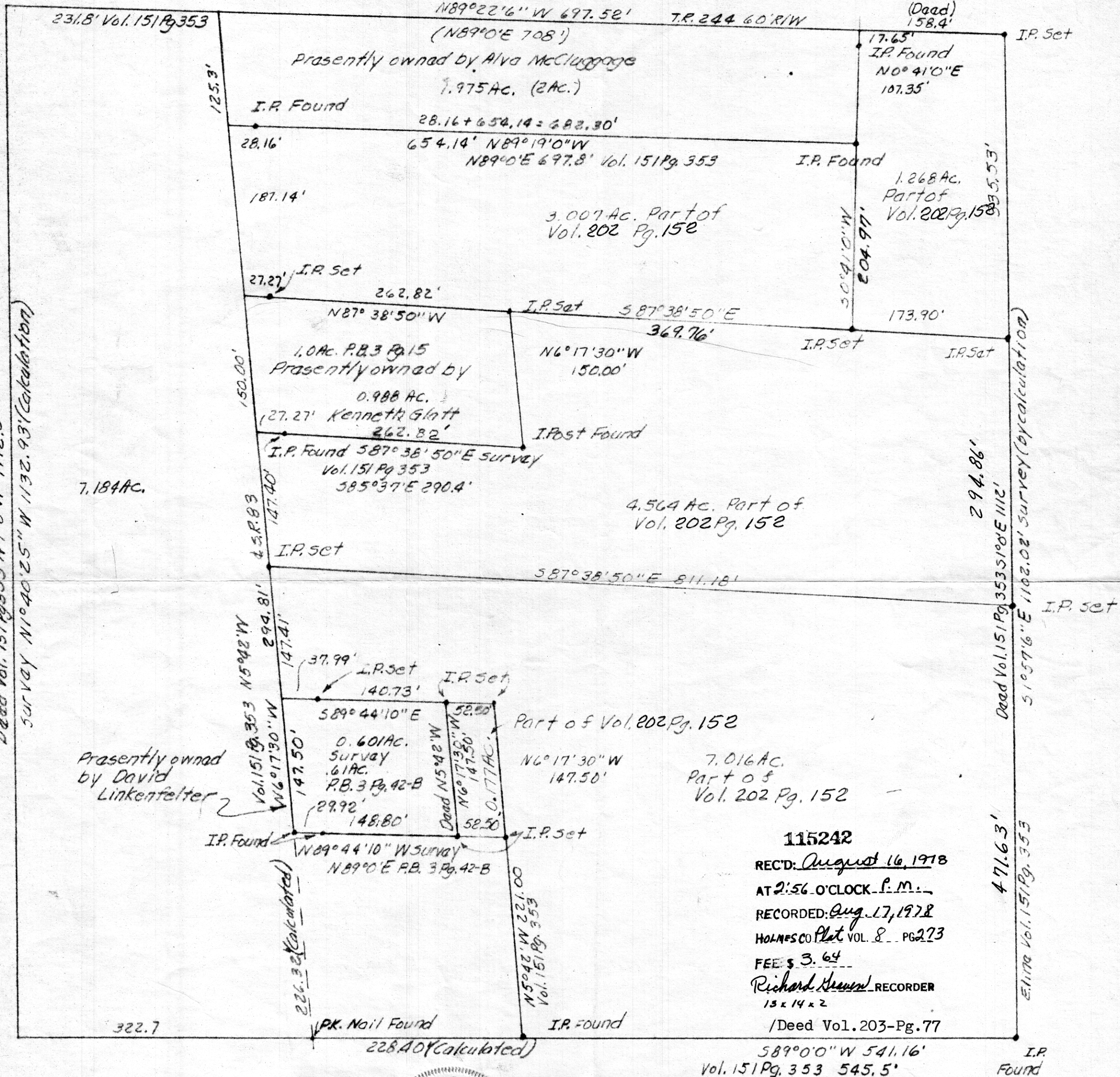


N.W. CORNER FROC. 514  
T13N R13W Vol. 151 Pg. 353

Holmes Co. Infirmity

Vol. 151 Pg. 353



MAP OFFICE COPY

PLAT OF A RESURVEY OF  
VOL. 151 PG. 353  
Known as part of FROC. 514, T13N,  
R13W of Prairie TWP, Holmes Co., Ohio  
Robert L. Kasner P.S. 5193 P.E. 28820