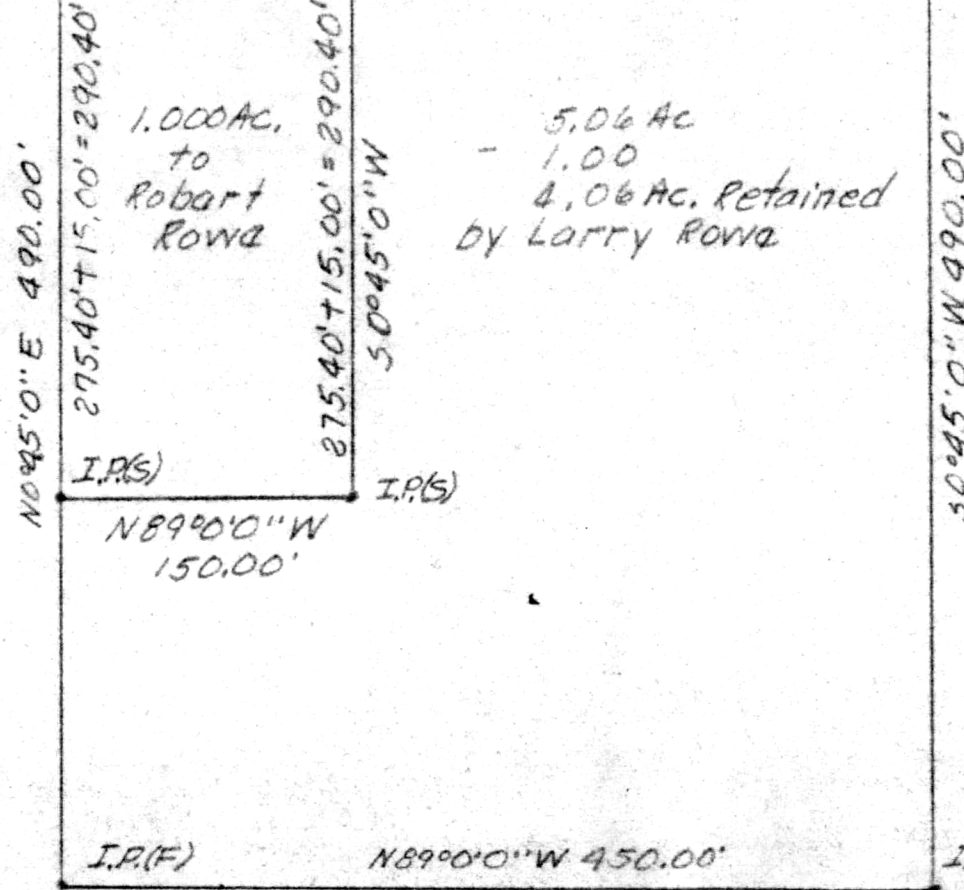


MAP OFFICE COPY

527 526 I.P. T.R. 246 589°0'0"E 450.00' I.P.

534 535 450.00' I.P.(F) 150.00' I.P.(S) 300.00'



1.000 Ac. to Robert Rowa  
5.06 Ac - 1.00 = 4.06 Ac. Retained by Larry Rowa

Known as part of the N.W. 1/4 535, T. 14 N, R. 13 W of Prairie Twp., Hol. Co., Ohio.

Beginning at the N.W. corner of 535; thence 589°0'0"E 450.00' to the true point of beginning of the here in described parcel;

thence with N. line 535 & T.R. 246 589°0'0"E 150.00';

thence leaving said lines S 0°45'0"W 290.40' to an iron pin set and passing an iron pin set at 150.00';

thence N89°0'0"W 150.00' to an iron pin set;

thence N0°45'0"E 290.40' to I.P. the point of beginning and containing 1.000 acres and passing an iron pin at 275.40', but subject to all legal highways.

Survey and description by Robert L. Kasner P.S. 5193.

Deed Vol. 202-Pg. 735

RECORDED July 26, 1928

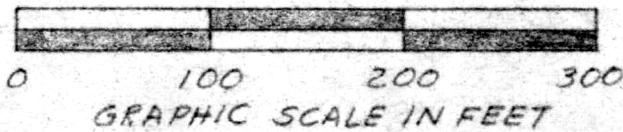
AT 9:42.0 CLOCK A.M.

RECORDED July 26, 1928

HO. S. CO. Vol. 8 Pg. 254

FEE: \$ 2

RECORDED



Known as part of N.W. 1/4 535  
T. 14 N, R. 13 W of Prairie  
Twp., Hol. Co., Ohio.



115007