

114994

REC'D: July 25, 1978

AT 4:19 O'CLOCK P.M.

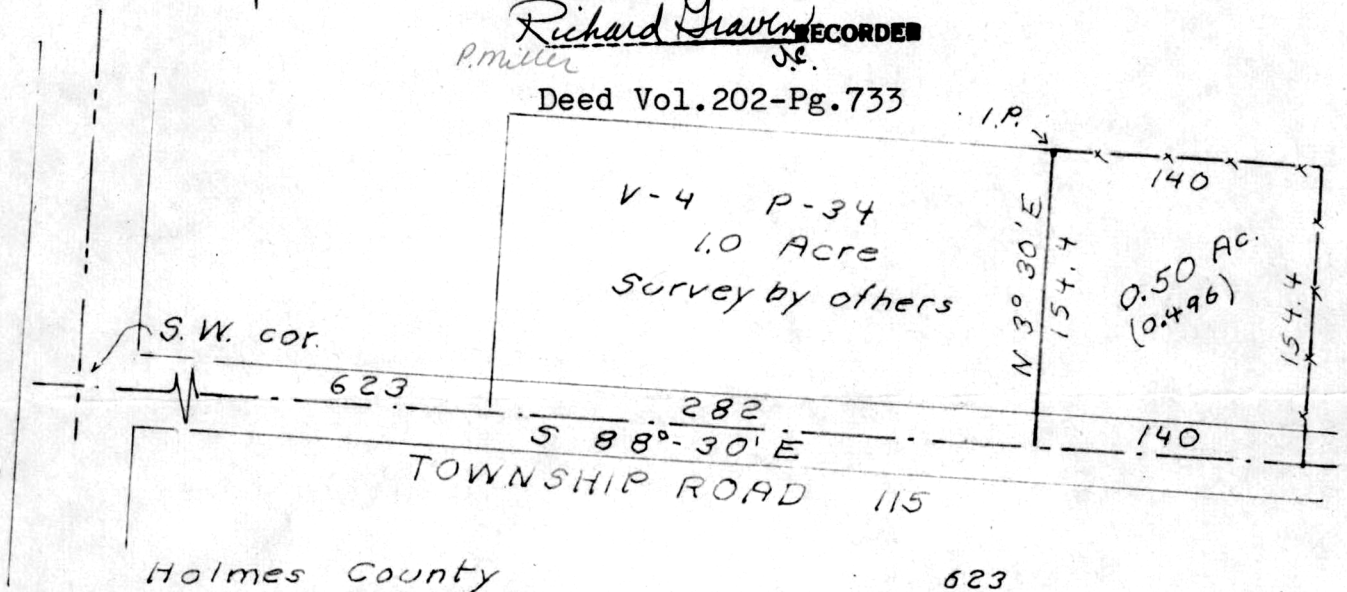
RECORDED: July 26, 1978

HOLMES CO. Plat VOL 8 PG. 253

FEE: \$ 2.00

Richard Graven RECORDED
P. Miller J.E.

Deed Vol. 202-Pg. 733



Holmes County
 Clark Township
 Twp. 8 Range 5
 Section 9
 Southeast Qt.

623
 282

 905

Situated in Clark Township, Holmes County, Ohio, and being a part of the Southeast Quarter of Section 9 of Twp. 8 Range 5. Described further.

Beginning at a point on the South line (the center of Township road 115), 905 ft. South 88° 30' East, of the Southwest corner, of said Quarter, at a lot corner.

Thence; North 3° 30' East, 154.4 ft. with a lot line and to a lot corner.

Thence; South 88° 30' East, 140 ft. with a fence.

Thence; South 3° 30' West, 154.4 ft. with a fence to said South line

Thence; North 88° 30' West, 140 ft. with said South line to the place of beginning.

Containing 0.50 of an acre.

SCHLABACH ~ RABER SURVEY

May 1978

S. Horn, SUV. 831

MAP OFFICE COPY No 32-33-05