

Survey And Plat Made For Milan Miller  
 BALT CREEK TOWNSHIP T10  
 4<sup>th</sup> Qtr., Lot 18, Range 6  
 VILLAGE OF BENTON  
 HOLMES COUNTY, OHIO

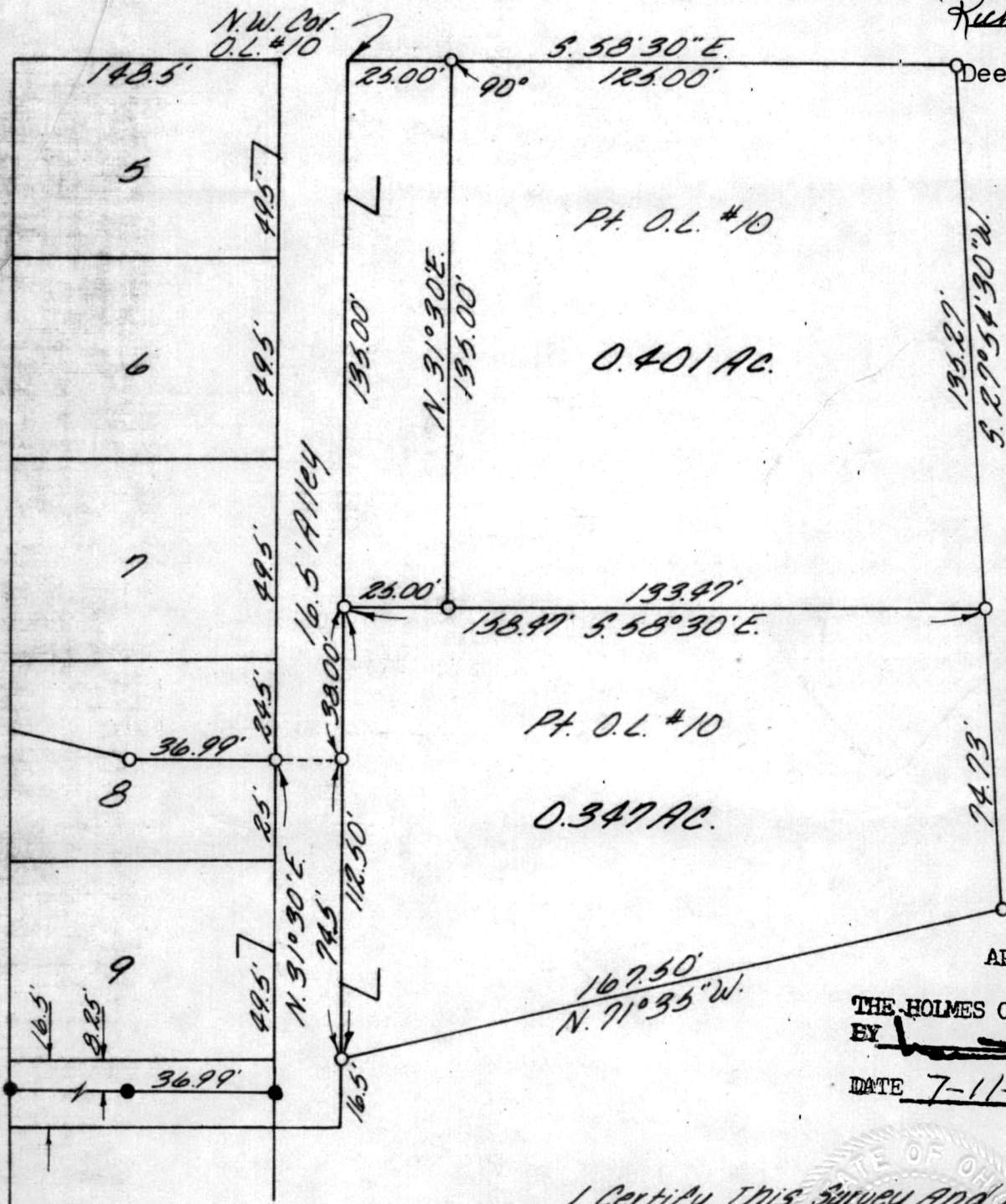
114827

REC'D: July 11<sup>th</sup> 1978  
 AT 9:56 O'CLOCK A.M.  
 RECORDED: July 11<sup>th</sup> 1978  
 HOLMES CO. Plat VOL 8 PG. 239  
 FEE: \$ 2.<sup>00</sup>

*Richard M. ...* RECORDED

Deed Vol. 202-Pg. 551

CALHOUN ST. 49.5'



Scale 1" = 40'

LEGEND

- I.P.Fd.
- I.P. Set

APPROVED BY  
 THE HOLMES COUNTY HEALTH DEPARTMENT  
 BY *[Signature]*

DATE 7-11-1978

for .401 AC.

I Certify This Survey And Plat To Be Correct  
 To The Best of My Knowledge.

5-26-78

*Ronald G. Rudolph*  
 Ronald G. Rudolph R.S. 6449  
 1175 Summercrest Dr.  
 Wooster Ohio 44691

MAP OFFICE COPY