

114158

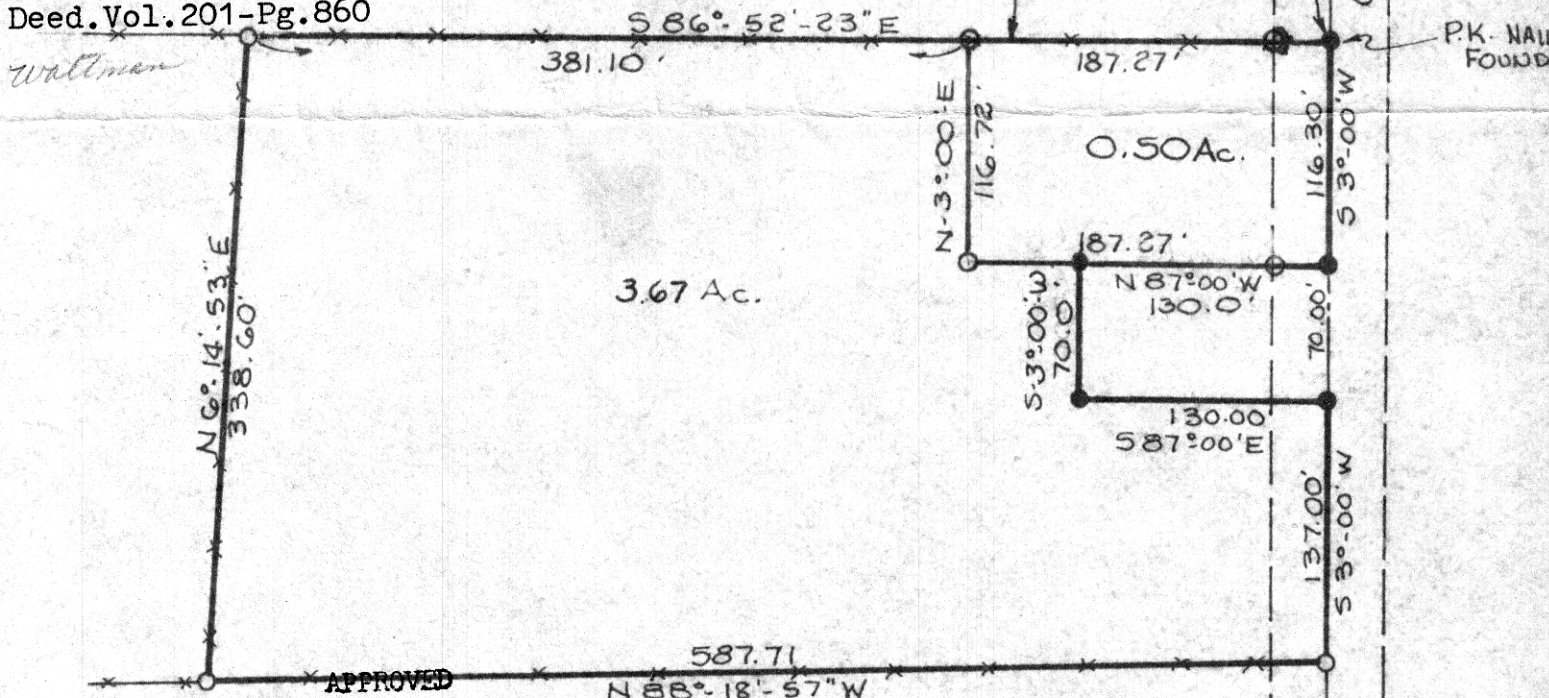
REC'D: May 15, 1978
AT 11:39 O'CLOCK A.M.
RECORDED: May 16, 1978
HOLMES CO. Plot Vol. 8 Pg. 194
FEE: \$ 2.⁰⁰

Richard Meaux RECORDED
Deed. Vol. 201-Pg. 860

BERLIN TOWNSHIP
N.E. CORNER OF THE SOUTH
HALF OF LOT NO. 13
1ST. QTR. U.S. MILITARY LAND
TWP. 9 RANGE 6
HOLMES COUNTY
OHIO

NORTH LINE OF SOUTH
ONE HALF OF LOT #13

N.E. CORNER OF
S. HALF LOT #13



APPROVED BY
THE HOLMES COUNTY HEALTH DEPARTMENT
BY [Signature] G.W.S

DATE 5-5-1978

JUNE 1976
Revised - April, 1978



I CERTIFY THIS SURVEY TO BE CORRECT
TO THE BEST OF MY KNOWLEDGE.

Clyde E. Purdy
CLYDE E. PURDY O.R.S.#4900

SCALE: 1" = 100'
○ I.P. SET
● I.P. FOUND

MAP OFFICE COPY