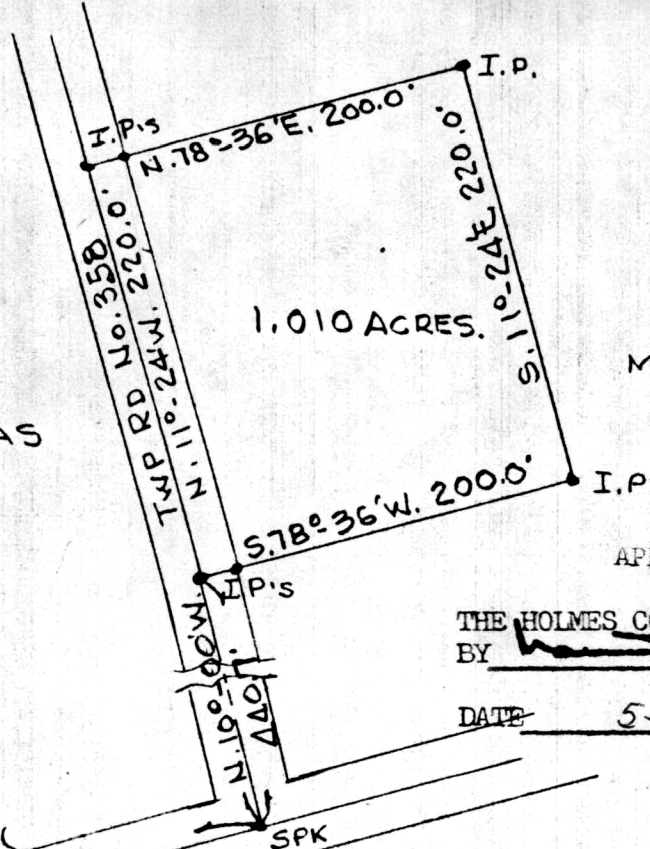


WILBERT E. MATHIAS
VOL. 106, PG. 299



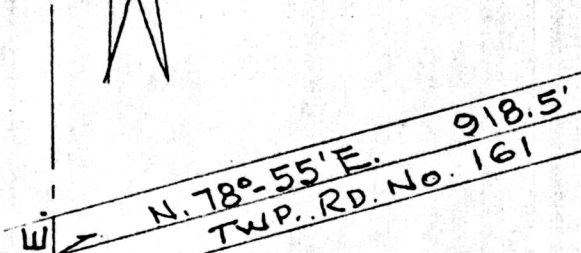
1.010 ACRES.

MATHIAS.

APPROVED
BY

THE HOLMES COUNTY HEALTH DEPARTMENT
BY [Signature] CWS

DATE 5-9-1978



114073
REC'D May 9th, 1978
AT 10:35 O'CLOCK a.m.
RECORDED May 9, 1978
HOLMES CO. Plat VOL. 8 PG. 188
FEE: \$ 2.00

Richard Craven RECORDER

Deed Vol. 201-Pg. 785

PLAT OF A SURVEY OF A PART OF LOT 23,
IN THIRD QUARTER, TOWNSHIP 10, RANGE 4,
MILITARY LANDS, PAINT TOWNSHIP, HOLMES
COUNTY, OHIO FOR WILBERT E. MATHIAS.
SCALE 1"=100'
APRIL 8, 1978
R.H.HUNSINGER, #3685, REGISTERED SURVEYOR



MAP OFFICE COPY