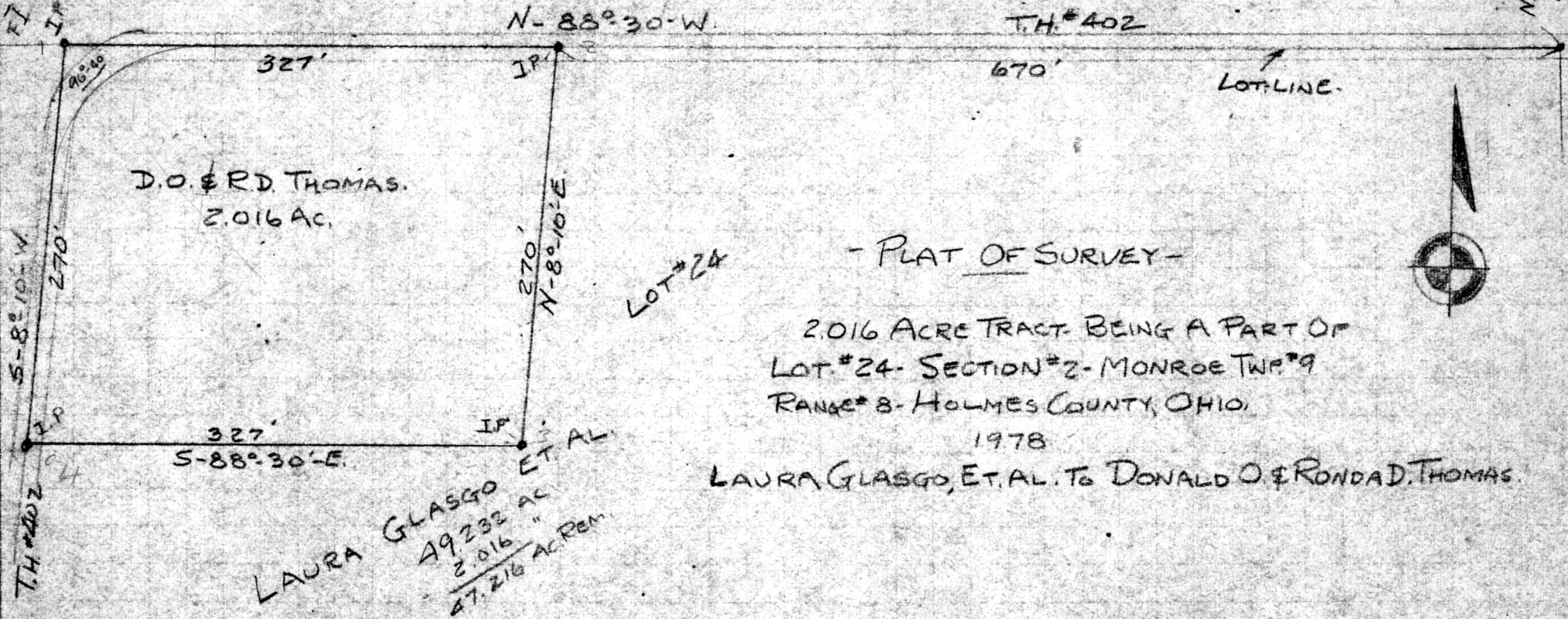


FI OF CURVE WITH  
IP OF 96° 40' R=100  
VERY IRREGULAR  
GRADING

NE CORNER  
LOT #24



- PLAT OF SURVEY -  
 2.016 ACRE TRACT BEING A PART OF  
 LOT #24 - SECTION #2 - MONROE TWP #9  
 RANGE #8 - HOLMES COUNTY, OHIO.  
 1978  
 LAURA GLASGO, ET AL. TO DONALD O & RONNAD THOMAS.

APPROVED BY

THE HOLMES COUNTY HEALTH DEPARTMENT

I HEREBY CERTIFY THE ABOVE PLAT TO BE CORRECT TO A SURVEY

MADE BY ME MARCH 31, 1978

MAP OFFICE COPY



*Walter Sage*

113978  
 Rec'd. for record May 1<sup>st</sup> 1978 at 4:10 o'clock P  
 Recorded May 2 1978 in Plot Vol. 8 Pg. 179  
 Holmes County, Ohio Richard Shraun Recorder. Fee: \$ 2.00  
 Deed Vol. 201 - Pg. 659

WALTER F. SAGE  
 REGISTERED SURVEYOR #789  
 3904 Darlington Rd. N.W.  
 CANTON 8, OHIO  
 DATE 4-1-78 SCALE: 1"=100'  
 B. P. DWG. NO. SK-1459