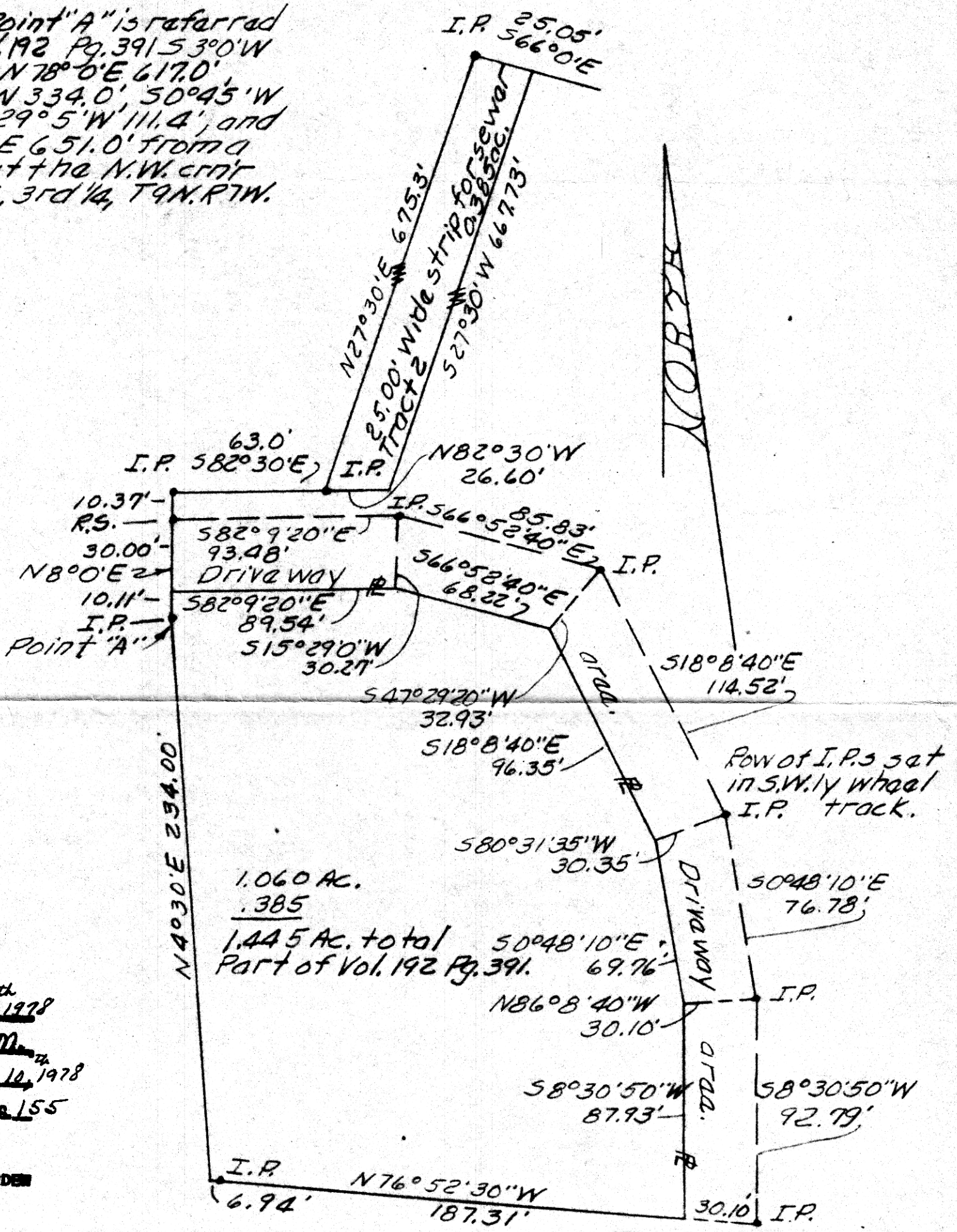


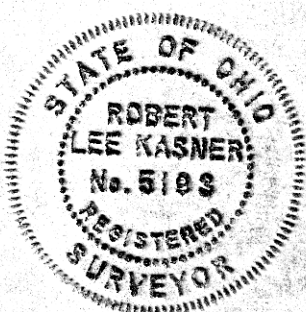
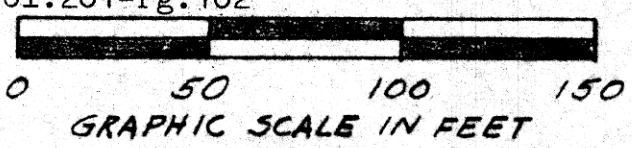
Note: Point "A" is referred to in Vol. 192 Pg. 391 S3°0'W 1078.0', N78°0'E 617.0', 55°30'W 334.0', 50°45'W 264.0', 529°5'W 111.4', and 582°30'E 651.0' from a stone at the N.W. cor of Lot 6, 3rd 1/4, T9N, R7W.



113351

REC'D February 10<sup>th</sup> 1978  
 AT 10:49 O'CLOCK A.M.  
 RECORDED February 10<sup>th</sup> 1978  
 HOLMES CO. Plat VOL. 8 PG. 155  
 FEE: \$3.<sup>00</sup>

Richard Haver RECORDER  
 John Crane  
 10 X 16 X 2  
 Deed Vol. 201-Pg. 102



PLAT OF A SURVEY FOR  
 CHARLES WM. & HELEN  
 ROSE THOMPSON  
 (Grantors)  
 Known as part of Lot 6, 3rd 1/4, T9N,  
 & R7W of Hardy Twp, Hol. Co., Ohio.  
 Robert L. Kasner, P.S. 5193, P.E. 28820.

MAP OFFICE COPY

10/3/77