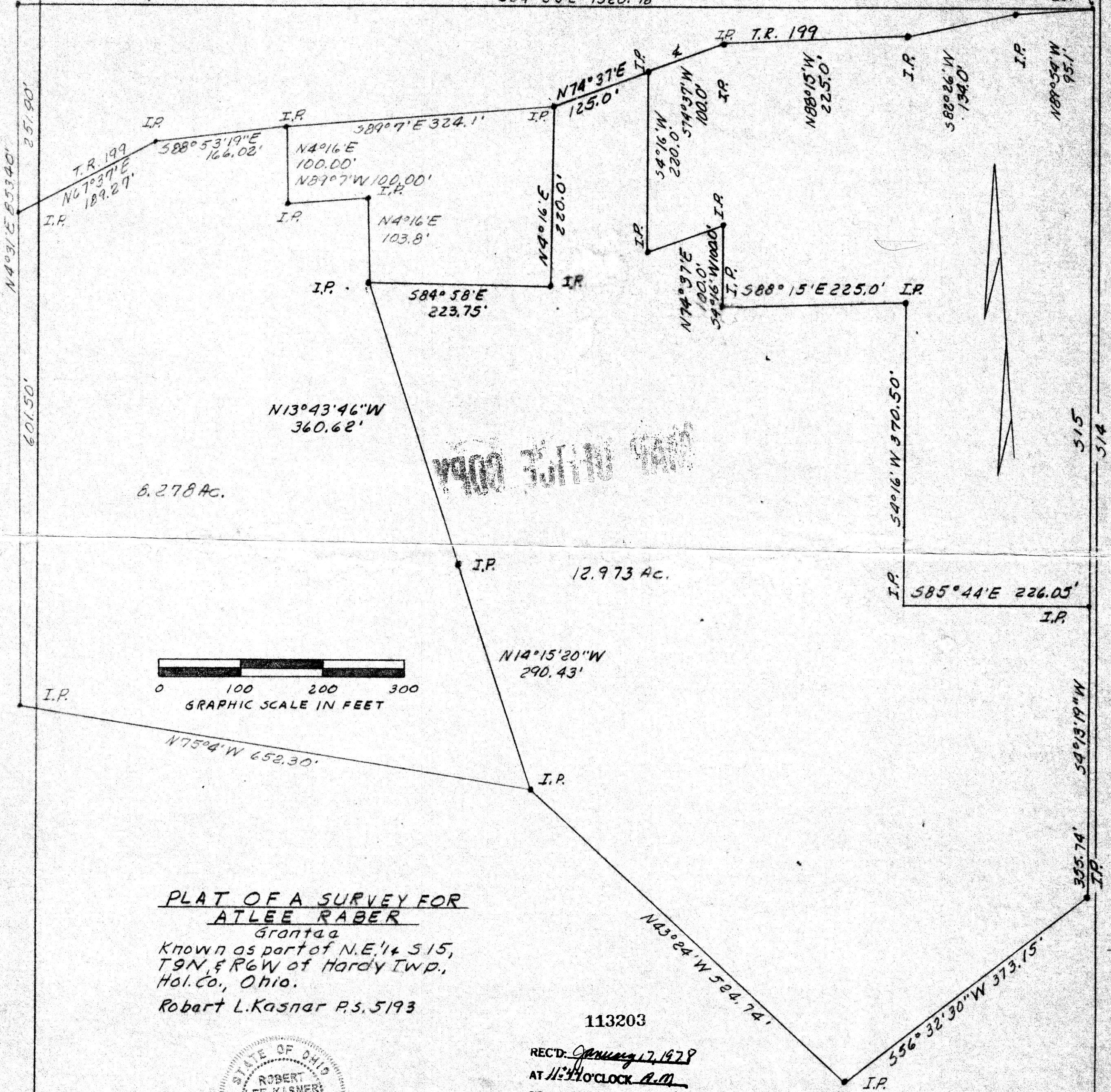


N.W. CORNER N.E. 1/4
S15, T9N, R6W

584°58'E 1320.18'

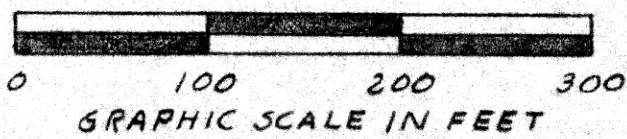
56

NE. CORNER S15, T9N, R6W



6.278 AC.

12.973 AC.



PLAT OF A SURVEY FOR
ATLEE RABER

Grantee

Known as part of N.E. 1/4 S15,
T9N, R6W of Hardy Twp.,
Hol. Co., Ohio.

Robert L. Kasnar P.S. 5193

113203

REC'D: January 17, 1978

AT 11:10 O'CLOCK A.M.

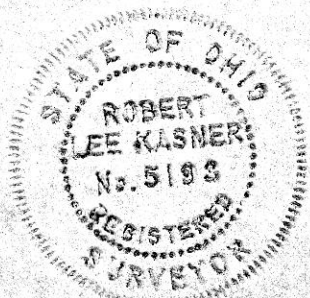
RECORDED: Jan 17, 1978

HOLMES CO. Plat VOL. 8 PG. 38

FEES: \$ 4.14

Richard Brown RECORDER

13X16X2 Deed Vol. 200 - Pg. 834



MAP OFFICE COPY