

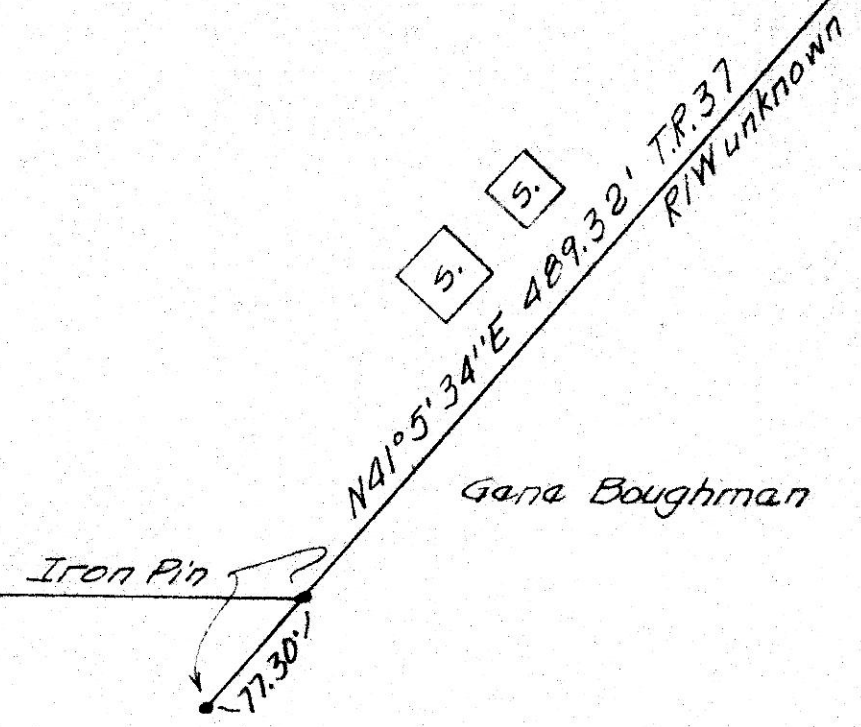


Stone at NW corner SW 1/4  
523, T8N, R8W

NW 1/4  
589° 9' 43" E 1321.68

Iron Pipe Edge TR.37

10.001 Ac.  
Part of previous Conveyance V. 185 P. 20



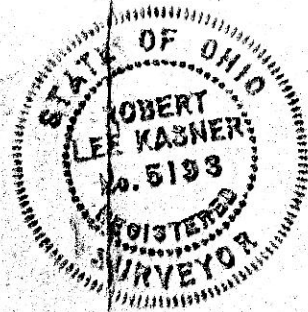
Gene Boughman

589° 9' 43" E 1011.56'

Joe Popa

Scale: 1" = 100'

942.74' N1° 46' 9" E  
Iron Pin 373.49'



I certify this to be correct  
to the best of my knowledge  
and belief, Robert L. Kasner R.S. 5193

113066

REC'D: December 28, 1977  
AT 1:40 O'CLOCK P.M.  
RECORDED: December 29, 1977  
HOLMES CO. Plat VOL. 8 PG. 128  
FEE: \$ 3.<sup>19</sup>

Richard Green RECORDER  
14 1/2 x 10 x 2  
Vol. 200 - Pg. 706

PLAT OF A SURVEY FOR  
JOE POPA (Grantor)  
NW 1/4 523, T8N & R8W of Killbuck  
Township, Holmes County, Ohio.

MAP OFFICE COPY